

# LINCOLN COUNTY U.S. PUBLIC LAND TIE SHEET RECORD

SECTION 6  
TOWNSHIP 33N  
RANGE 4 E

63347  
NO.

LANDMARK

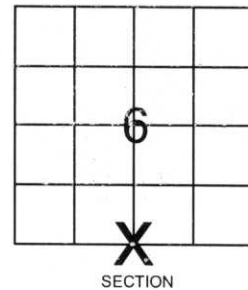
**CORNING**  
CITY, VILLAGE, TOWN

CORNER INDENTITY: 1.5" IRON PIPE & WOOD POST

LINCOLN COUNTY COORDINATE: N: 190793.332  
E: 304253.187

DATE OF SURVEY: January 28, 2008  
SURVEY PARTY: Eron

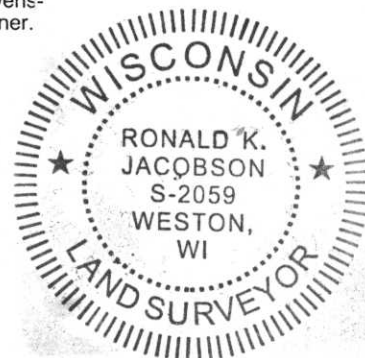
FOUND   
SET   
RE-SET   
RE-TIED



Description of monument found at this corner and if was accepted, state all evidence (material, testimonial, occupational, plats, records, other monuments) used as a basis for accepting. If not accepted or if nothing was found, state evidence used as basis for establishing location. If reestablished through lost corner proportionate methods, indicate all monuments, distances and directions used to establish.

## BASIS FOR MONUMENT LOCATION:

(DESCRIBE METHOD OF SURVEY AND CORNER AUTHENTICATION)  
Found 1.5" Iron Pipe and wood post at corner. Property evidence, comparison to surveys done by Cwens-Illinois in 1960, and comparison to the original notes supports the 1.5" Iron Pipe and wood post as corner.



**CWE, Inc.**

5707 SCHOFIELD AVE.  
WESTON, WISCONSIN  
54476

PHONE: (715) 359-9400  
FAX: (715) 355-4199

general@cwengineers.com  
www.cwengineers.com

RECEIVED BY LINCOLN COUNTY  
SURVEYOR THIS 21<sup>ST</sup> DAY  
OF February 20 08  
Ronald Jacobson  
COUNTY SURVEYOR

CERTIFIED CORRECT:

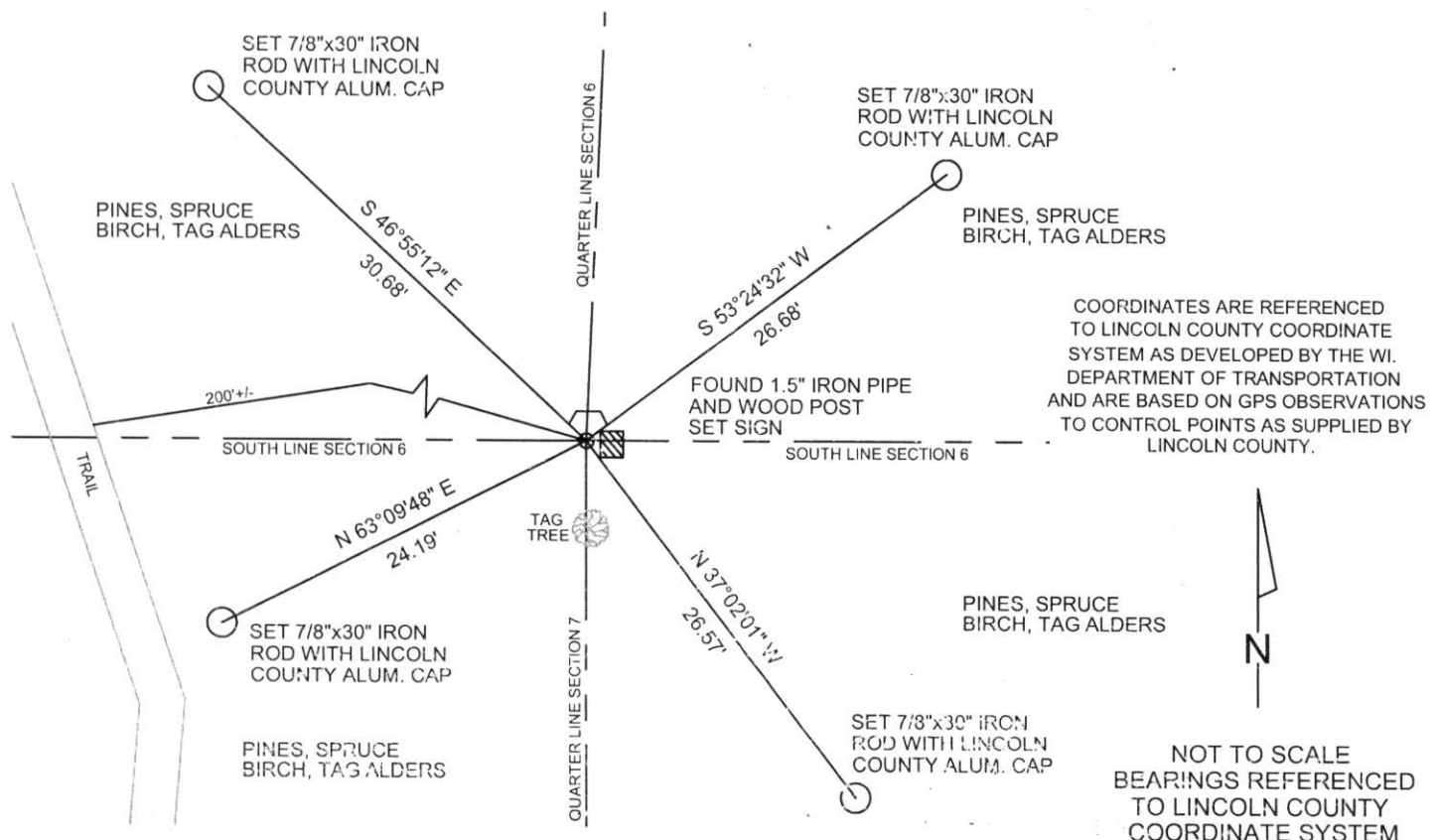
Ronald Jacobson RLS 2059-008

Registered Land Surveyor

DATE: February 5, 2008

## TIE SKETCH:

SHOW MINIMUM OF FOUR (4) HORIZONTAL TIE DISTANCES TO FIXED WITNESS MONUMENTS.  
DESCRIBE ALL MONUMENTS FOUND OR SET. ALL DISTANCES SHOWN IN US SURVEY FEET.



Picture 1 – Looking North From Corner



Picture 2 – Looking East From Corner



Picture 3 – Looking South From Corner at Tag Tree



Picture 4 – Looking West From Corner



Picture 5 –Found 1.5 Iron Pipe and Wood Post at Corner

