

LINCOLN COUNTY U.S. PUBLIC LAND TIE SHEET RECORD

SECTION 4
TOWNSHIP 33N
RANGE 4 E

43344
NO.

LANDMARK

CORNER INDENTY: 1.0" IRON PIPE & WOOD POST

LINCOLN COUNTY COORDINATE: N: 193340.484

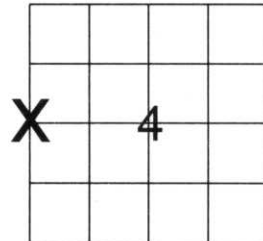
E: 312117.772

DATE OF SURVEY: January 16, 2008

SURVEY PARTY: Eron

CORNING
CITY, VILLAGE, TOWN

FOUND
SET
RE-SET
RE-TIED



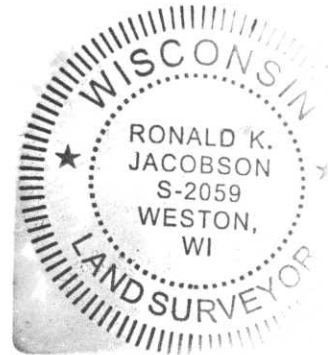
SECTION

Description of monument found at this corner and if was accepted, state all evidence (material, testimonial, occupational, plats, records, other monuments) used as a basis for accepting. If not accepted or if nothing was found, state evidence used as basis for establishing location. If reestablished through lost corner proportionate methods, indicate all monuments. Indistances and directions used to reestablish.

BASIS FOR MONUMENT LOCATION:

(DESCRIBE METHOD OF SURVEY AND CORNER AUTHENTICATION)

Found 1" Iron Pipe and wood post at corner. Blue line, Property evidence, and comparison to the original notes supports the 1" Iron Pipe and wood post as corner.



CWE, Inc.

5707 SCHOFIELD AVE.
WESTON, WISCONSIN
54476

PHONE: (715) 359-9400
FAX: (715) 355-4199

general@cwengineers.com
www.cwengineers.com

CERTIFIED CORRECT:

Ronald Jacobson

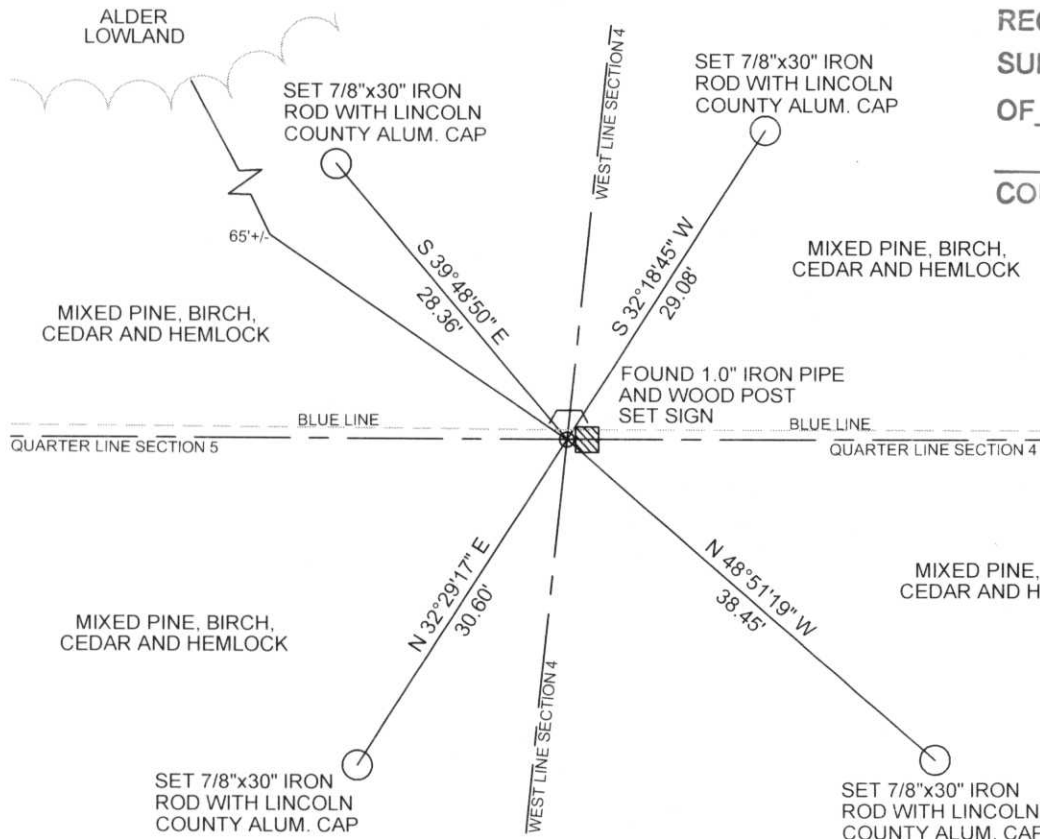
Ronald Jacobson RLS 2059-008

Registered Land Surveyor

DATE: January 25, 2008

TIE SKETCH:

SHOW MINIMUM OF FOUR (4) HORIZONTAL TIE DISTANCES TO FIXED WITNESS MONUMENTS.
DESCRIBE ALL MONUMENTS FOUND OR SET. ALL DISTANCES SHOWN IN US SURVEY FEET.



RECEIVED BY LINCOLN COUNTY
SURVEYOR THIS 24TH DAY
OF January 20 08
Tommy Dall
COUNTY SURVEYOR

COORDINATES ARE REFERENCED TO LINCOLN COUNTY COORDINATE SYSTEM AS DEVELOPED BY THE WI. DEPARTMENT OF TRANSPORTATION AND ARE BASED ON GPS OBSERVATIONS TO CONTROL POINTS AS SUPPLIED BY LINCOLN COUNTY.

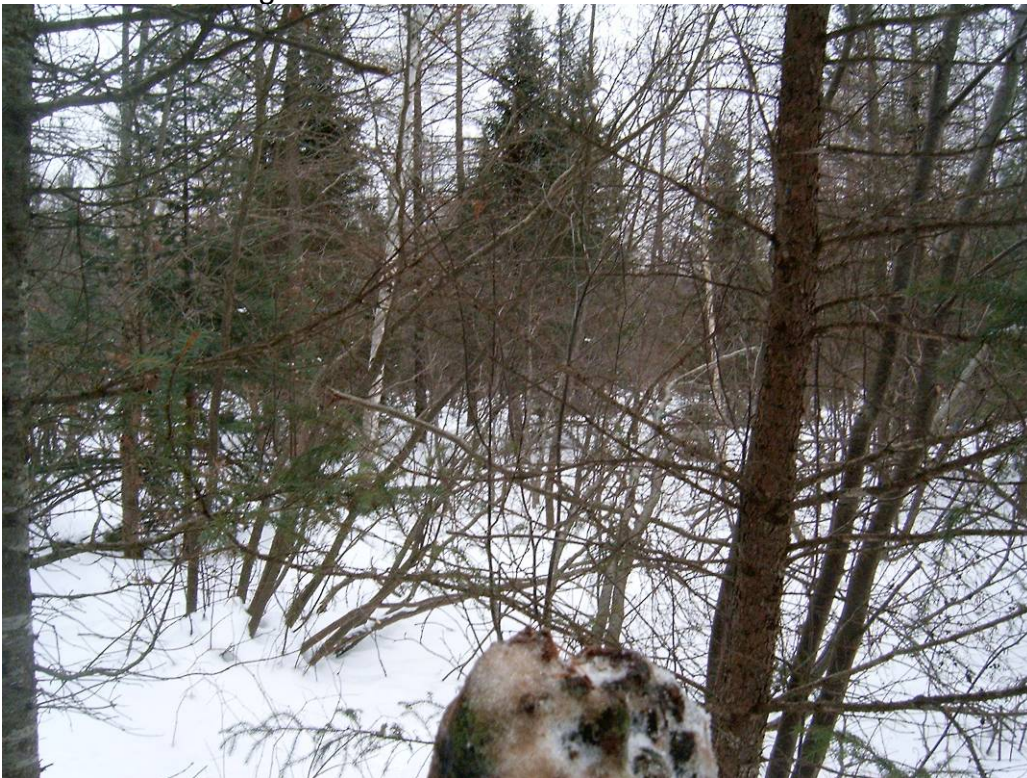
NOT TO SCALE
BEARINGS REFERENCED TO LINCOLN COUNTY COORDINATE SYSTEM

6-9

Picture 3 – Looking South From Corner



Picture 4 – Looking West From Corner at Blue Line



Picture 5 –Found Wood Post and 1 inch Iron Pipe at Corner



Picture 6 –Found Wood Post and 1 inch Iron Pipe at Corner

