

# LINCOLN COUNTY U.S. PUBLIC LAND TIE SHEET RECORD

SECTION 5  
TOWNSHIP 33N  
RANGE 4 E

53347  
NO.

**CORNING**  
CITY, VILLAGE, TOWN

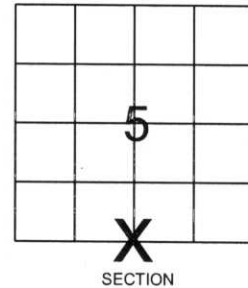
LANDMARK

CORNER INDENTITY: 1.5" IRON PIPE

LINCOLN COUNTY COORDINATE: N: 190785.383  
E: 309319.539

DATE OF SURVEY: February 26, 2008  
SURVEY PARTY: Eron/Rutzen

FOUND   
SET   
RE-SET   
RE-TIED

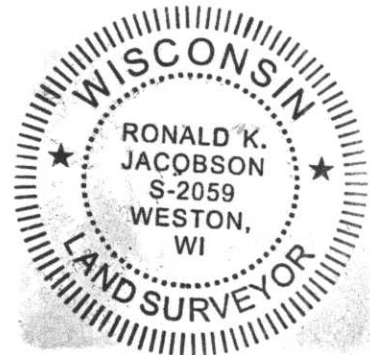


Description of monument found at this corner and if was accepted, state all evidence (material, testimonial, occupational, plats, records, other monuments) used as a basis for accepting. If not accepted or if nothing was found, state evidence used as basis for establishing location. If reestablished through lost corner proportionate methods, indicate all monuments, distances and directions used to establish.

## BASIS FOR MONUMENT LOCATION:

(DESCRIBE METHOD OF SURVEY AND CORNER AUTHENTICATION)

Found 1.5" Iron Pipe and Wood Post at corner. Property evidence, comparison to the original notes and comparison to Owens Illinois notes from 1967 support the 1.5" Iron Pipe and Wood Post as corner.



**CWE, Inc.**

5707 SCHOFIELD AVE.  
WESTON, WISCONSIN  
54476

PHONE: (715) 359-9400  
FAX: (715) 355-4199

general@cwengineers.com  
www.cwengineers.com

CERTIFIED CORRECT:

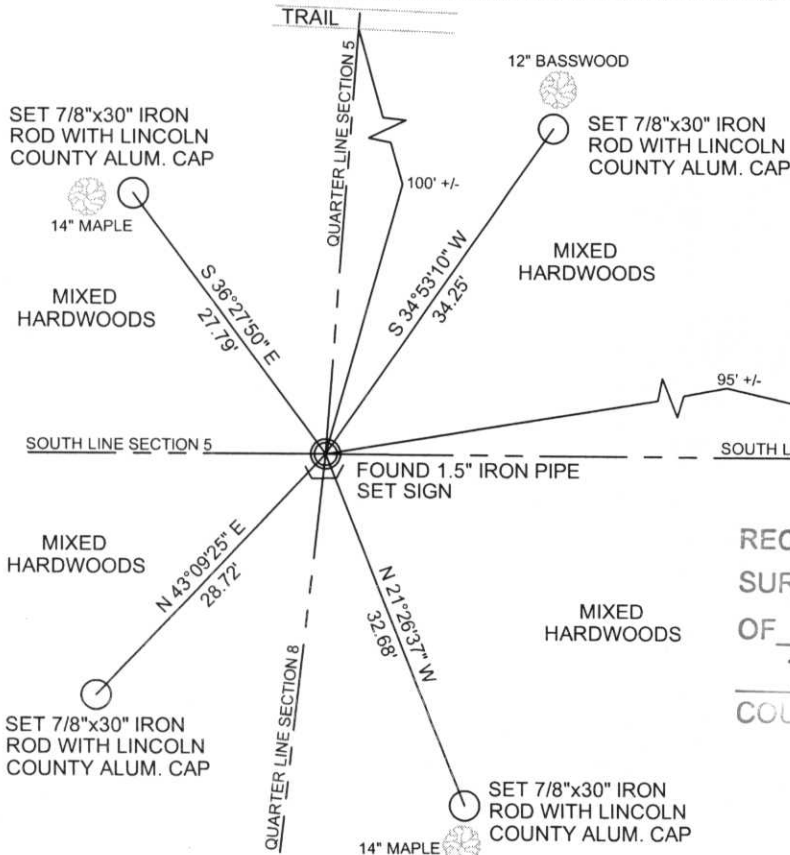
*Ronald Jacobson*  
Ronald Jacobson RLS 2059-008

Registered Land Surveyor

DATE: March 5, 2008

## TIE SKETCH:

SHOW MINIMUM OF FOUR (4) HORIZONTAL TIE DISTANCES TO FIXED WITNESS MONUMENTS.  
DESCRIBE ALL MONUMENTS FOUND OR SET. ALL DISTANCES SHOWN IN US SURVEY FEET.



COORDINATES ARE REFERENCED TO LINCOLN COUNTY COORDINATE SYSTEM AS DEVELOPED BY THE WI. DEPARTMENT OF TRANSPORTATION AND ARE BASED ON GPS OBSERVATIONS TO CONTROL POINTS AS SUPPLIED BY LINCOLN COUNTY.

RECEIVED BY LINCOLN COUNTY  
SURVEYOR THIS 5<sup>TH</sup> DAY  
OF March 20 08  
*Tommy Darr*  
COUNTY SURVEYOR

NOT TO SCALE  
BEARINGS REFERENCED  
TO LINCOLN COUNTY  
COORDINATE SYSTEM

E-7



Picture 3 – Looking South From Corner



Picture 4 – Looking West From Corner



Picture 5 –Found 1.5 Iron Pipe at Corner

