

U.S. PUBLIC LAND SURVEY MONUMENT RECORD

NOTE: THIS FORM IS INTENDED AND DESIGNED TO FULFILL ALL REQUIREMENTS OF WISCONSIN ADMINISTRATIVE CODE, CHAPTER LAND SURVEY MONUMENT RECORD (3) (a) (b) (c) (d) (e) (f) (g) (h) (i). AN ADDITIONAL SHEET MAY BE ADDED IF NECESSARY TO CONFORM WITH SAID REQUIREMENTS. A-E 7.08 U.S. PUBLIC

(a) CORNER LOCATION: TOWNSHIP 33 NORTH
 RANGE 4 EAST ~~WEST~~
 TOWN/CITY/VILLAGE CORNING
 COUNTY LINCOLN



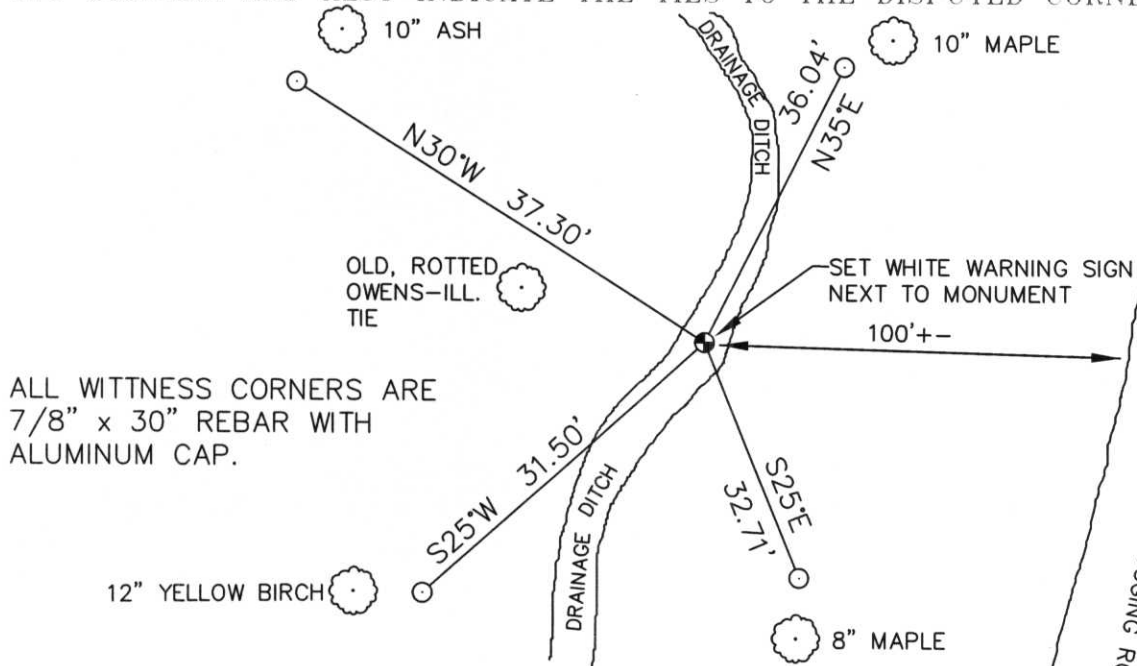
SECTION 9

(b) (f) (g) (h) DESCRIPTION OF MONUMENT FOUND AT THIS CORNER AND IF IT WAS ACCEPTED, STATE ALL EVIDENCE (MATERIAL, TESTIMONIAL, OCCUPATIONAL, PLATS, RECORDS, OTHER MONUMENTS) USED AS BASIS FOR ACCEPTING. IF NOT ACCEPTED OR IF NOTHING WAS FOUND, STATE EVIDENCE USED AS BASIS FOR ESTABLISHING LOCATION. IF REESTABLISHED THROUGH LOST CORNER PROPORTIONATE METHODS, INDICATE ALL MONUMENTS, DISTANCES AND DIRECTIONS USED TO ESTABLISH. INDICATE TYPE OF MONUMENT FOUND OR SET AND SIGN POST.

DROVE TO CORNER LOCATION. FOUND 1" x 4' IRON PIPE, PAINTED, LEANING OVER IN SMALL DRAINAGE DITCH. STRAIGHTENED PIPE, FOUND TIE TO 5" MAPLE, AS SHOWN ON OWENS-ILLINOIS TIE SHEET ON RECORD IN LINCOLN COUNTY SURVEYORS OFFICE. TIE DISTANCE MATCHED PIPE. THERE WERE NO BLAZE LINES IN ANY DIRECTION. PIPE HAD A VERY OLD PIECE OF RIBBON TIED TO IT. AFTER VERIFYING DISTANCES TO OTHER CORNERS (FROM OWENS-ILLINOIS TIE SHEET), I HELD THIS PIPE AS THE CORNER. REMOVED PIPE AND SET A 2' SWAMP ROD, IN ROCKY DRAINAGE DITCH. THERE WERE ROCKS PILED AROUND THE ORIGINAL PIPE, I ADDED MORE AROUND THE SWAMP ROD. SET WARNING POST ON WEST SIDE, TIED OUT CORNER.

FOUND A SQUARED OFF, SCRIBED WOOD POST, LAYING ON GROUND BY PIPE. MEASURED TO THE NW CORNER OF NE 1/4, NE 1/4 SEC. 8-33-4. DISTANCE WAS ONLY 1267.08'. DEAN PELKEY, FORESTER WITH FORMER OWENS-ILLINOIS, DID NOT KNOW HOW THIS 40 CORNER WAS SET.

(c) (d) (e) PLAN VIEW OF CORNER WITH TIES TO AT LEAST 4 WITNESS MONUMENTS. IF IN DISAGREEMENT WITH PREVIOUSLY ESTABLISHED CORNER, SHOW THE DISTANCES BETWEEN THE TWO CORNERS AND ALSO INDICATE THE TIES TO THE DISPUTED CORNER.



ALL WITNESS CORNERS ARE 7/8" x 30" REBAR WITH ALUMINUM CAP.

RECEIVED BY LINCOLN COUNTY SURVEYOR THIS 12TH DAY OF December 20 05
Tom Dalk
 COUNTY SURVEYOR

(i) I, DAVID L. OSTERBRINK RLS # S-2014
 (TYPE OR PRINT NAME) CERTIFY THAT THE CORNER LOCATION ON THIS RECORD WAS DETERMINED BY ME OR UNDER MY DIRECTION AND CONTROL AND THAT THIS U.S. PUBLIC LAND SURVEY MONUMENT RECORD IS CORRECT AND COMPLETE TO THE BEST OF MY KNOWLEDGE AND BELIEF.

David L. Osterbrink 12-8-05
 SIGNATURE DATE

