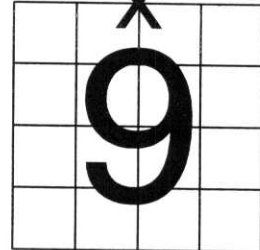


# U.S. PUBLIC LAND SURVEY MONUMENT RECORD

NOTE: THIS FORM IS INTENDED AND DESIGNED TO FULFILL ALL REQUIREMENTS OF WISCONSIN ADMINISTRATIVE CODE, CHAPTER A-E 7.08 U.S. PUBLIC  
 LAND SURVEY MONUMENT RECORD (3) (a) (b) (c) (d) (e) (f) (g) (h) (i). AN ADDITIONAL SHEET MAY BE ADDED IF NECESSARY TO CONFORM  
 WITH SAID REQUIREMENTS.

(a) CORNER LOCATION: TOWNSHIP 33 NORTH  
 RANGE 4 EAST ~~WEST~~  
 TOWN/CITY/VILLAGE CORNING  
 COUNTY LINCOLN

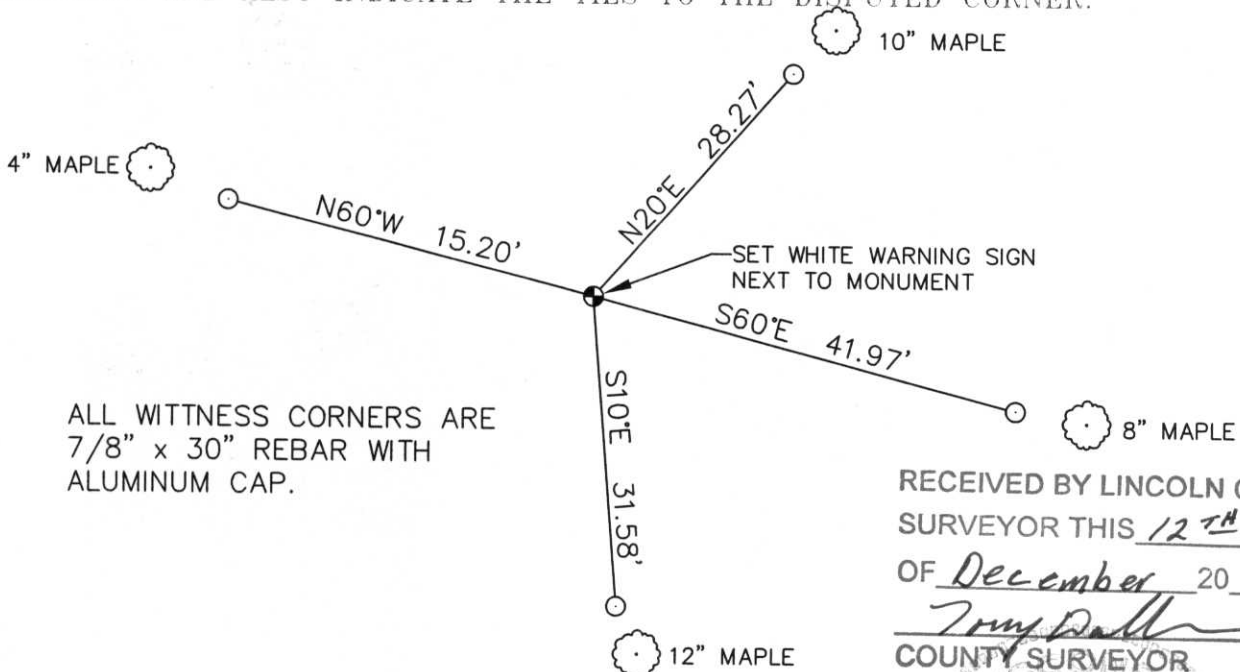


SECTION \_\_\_\_\_

(b) (f) (g) (h) DESCRIPTION OF MONUMENT FOUND AT THIS CORNER AND IF IT WAS ACCEPTED, STATE ALL EVIDENCE (MATERIAL, TESTIMONIAL, OCCUPATIONAL, PLATS, RECORDS, OTHER MONUMENTS) USED AS BASIS FOR ACCEPTING. IF NOT ACCEPTED OR IF NOTHING WAS FOUND, STATE EVIDENCE USED AS BASIS FOR ESTABLISHING LOCATION. IF REESTABLISHED THROUGH LOST CORNER PROPORTIONATE METHODS, INDICATE ALL MONUMENTS, DISTANCES AND DIRECTIONS USED TO ESTABLISH. INDICATE TYPE OF MONUMENT FOUND OR SET AND SIGN POST.

THIS CORNER IS SHOWN ON THE OWENS-ILLINOIS TIE SHEET, ON RECORD IN THE LINCOLN COUNTY SURVEYORS OFFICE. I TALKED ON THE PHONE WITH GLEN BECKMAN, LOCAL LAND OWNER. HE SAID THERE WAS AN IRON PIPE AT THIS CORNER AND IT HAD BEEN THERE AS LONG AS HE OWNED THE LAND. HE FELT IT WAS HIS NORTHWEST PROPERTY CORNER. WALKED TO CORNER. FOUND A 2" IRON PIPE, 4' LONG. FOUND THE 2 TIES SHOWN ON THE OWENS-ILLINOIS TIE SHEET. LINE IS CUT TO THE EAST AND SOUTH. HELD PIPE FOR CORNER. REMOVED PIPE AND SET A LINCOLN COUNTY BERNTSEN MONUMENT. TIED OUT.

(c) (d) (e) PLAN VIEW OF CORNER WITH TIES TO AT LEAST 4 WITNESS MONUMENTS. IF IN DISAGREEMENT WITH PREVIOUSLY ESTABLISHED CORNER, SHOW THE DISTANCES BETWEEN THE TWO CORNERS AND ALSO INDICATE THE TIES TO THE DISPUTED CORNER.



RECEIVED BY LINCOLN COUNTY  
 SURVEYOR THIS 12<sup>TH</sup> DAY  
 OF December 20 05  
*Tommy Dahl*  
 COUNTY SURVEYOR

(i) I, DAVID L. OSTERBRINK RLS # S-2014  
 (TYPE OR PRINT NAME) CERTIFY THAT THE CORNER  
 LOCATION ON THIS RECORD WAS DETERMINED BY ME  
 OR UNDER MY DIRECTION AND CONTROL AND THAT  
 THIS U.S. PUBLIC LAND SURVEY MONUMENT RECORD  
 IS CORRECT AND COMPLETE TO THE BEST OF MY  
 KNOWLEDGE AND BELIEF

*David L. Osterbrink* 12-8-05  
 SIGNATURE DATE



STAMP

INDEX NO. E-11