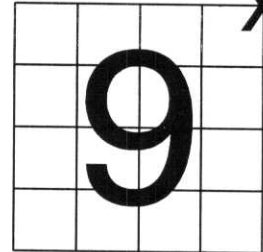


U.S. PUBLIC LAND SURVEY MONUMENT RECORD

NOTE: THIS FORM IS INTENDED AND DESIGNED TO FULFILL ALL REQUIREMENTS OF WISCONSIN ADMINISTRATIVE CODE, CHAPTER LAND SURVEY MONUMENT RECORD (3) (a) (b) (c) (d) (e) (f) (g) (h) (i). AN ADDITIONAL SHEET MAY BE ADDED IF NECESSARY TO CONFORM WITH SAID REQUIREMENTS. A-E 7.08 U.S. PUBLIC

(a) CORNER LOCATION: TOWNSHIP 33 NORTH
 RANGE 4 EAST ~~WEST~~
 TOWN/CITY/VILLAGE CORNING
 COUNTY LINCOLN

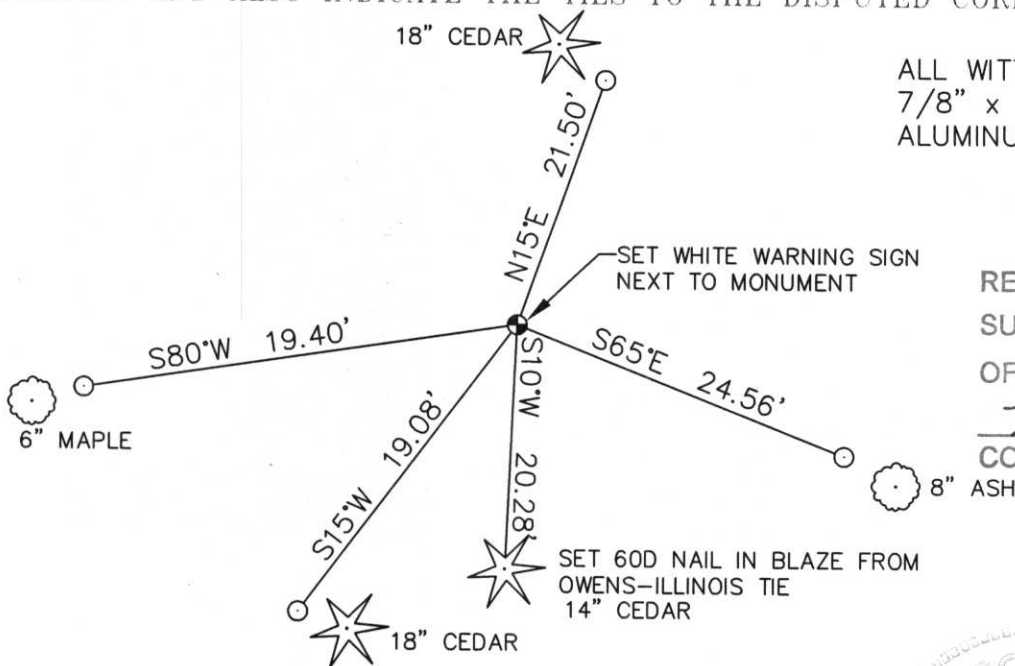


SECTION _____

(b) (f) (g) (h) DESCRIPTION OF MONUMENT FOUND AT THIS CORNER AND IF IT WAS ACCEPTED, STATE ALL EVIDENCE (MATERIAL, TESTIMONIAL, OCCUPATIONAL, PLATS, RECORDS, OTHER MONUMENTS) USED AS BASIS FOR ACCEPTING. IF NOT ACCEPTED OR IF NOTHING WAS FOUND, STATE EVIDENCE USED AS BASIS FOR ESTABLISHING LOCATION. IF REESTABLISHED THROUGH LOST CORNER PROPORTIONATE METHODS, INDICATE ALL MONUMENTS, DISTANCES AND DIRECTIONS USED TO ESTABLISH. INDICATE TYPE OF MONUMENT FOUND OR SET AND SIGN POST.

THIS CORNER IS SHOWN ON THE OWENS-ILLINOIS TIE SHEET, ON RECORD IN THE LINCOLN COUNTY SURVEYORS OFFICE. I TALKED ON THE PHONE WITH GLEN BECKMAN, LOCAL LAND OWNER. HE SAID THERE WAS AN IRON PIPE AT THIS CORNER AND IT HAD BEEN THERE AS LONG AS HE OWNED THE LAND. HE FELT IT WAS HIS NORTHEAST PROPERTY CORNER. WALKED TO CORNER. FOUND A 2" IRON PIPE, 5' LONG. FOUND 2 OF 3 TIES SHOWN ON THE OWENS-ILLINOIS TIE SHEET. LINE IS CUT TO THE WEST AND NORTH. LINE IS PAINTED NORTH AND SOUTH. CORNER FALLS IN SWAMP. HELD PIPE FOR CORNER. REMOVED PIPE AND SET A 5' LONG SWAMP ROD. SET WHITE WARNING POST NEXT TO SQUARED OFF WOOD POST WITH SCRIBED SECTION NUMBERS. TIED OUT.

(c) (d) (e) PLAN VIEW OF CORNER WITH TIES TO AT LEAST 4 WITNESS MONUMENTS. IF IN DISAGREEMENT WITH PREVIOUSLY ESTABLISHED CORNER, SHOW THE DISTANCES BETWEEN THE TWO CORNERS AND ALSO INDICATE THE TIES TO THE DISPUTED CORNER.



ALL WITNESS CORNERS ARE 7/8" x 30" REBAR WITH ALUMINUM CAP.

RECEIVED BY LINCOLN COUNTY SURVEYOR THIS 12TH DAY OF December, 2005
Tony Wall
 COUNTY SURVEYOR

(i) I, DAVID L. OSTERBRINK RLS # S-2014
 (TYPE OR PRINT NAME) CERTIFY THAT THE CORNER LOCATION ON THIS RECORD WAS DETERMINED BY ME OR UNDER MY DIRECTION AND CONTROL AND THAT THIS U.S. PUBLIC LAND SURVEY MONUMENT RECORD IS CORRECT AND COMPLETE TO THE BEST OF MY KNOWLEDGE AND BELIEF

David L. Osterbrink
 SIGNATURE

12-8-05
 DATE



STAMP

INDEX NO. E-13