

LINCOLN COUNTY U.S. PUBLIC LAND TIE SHEET RECORD

LANDMARK

CORNER INDENTITY: SWAMP MONUMENT

LINCOLN COUNTY COORDINATE: N: 190609.304

E: 319870.349

DATE OF SURVEY: September 18, 2008

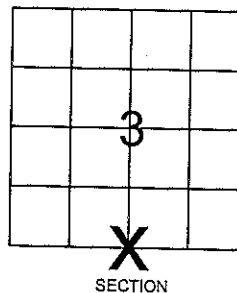
SURVEY PARTY: Eron

SECTION 3
TOWNSHIP 33N
RANGE 4 E

33347
NO.

CORNING
CITY, VILLAGE, TOWN

FOUND
SET
RE-SET
RE-TIED



Description of monument found at this corner and if was accepted, state all evidence (material, testimonial, occupational, plats, records, other monuments) used as a basis for accepting. If not accepted or if nothing was found, state evidence used as basis for establishing location. If reestablished through lost corner proportionate methods, indicate all monuments, distances and directions used to establish.

BASIS FOR MONUMENT LOCATION:

(DESCRIBE METHOD OF SURVEY AND CORNER AUTHENTICATION)

Set Lincoln County Swamp Monument at Corner. No other evidence was found at corner. Swamp Monument was set using single proportion measurement method.

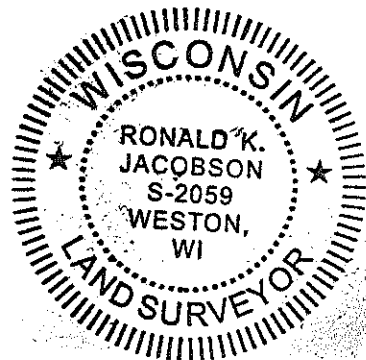


CWE, Inc.

5707 SCHOFIELD AVE.
WESTON, WISCONSIN
54476

PHONE: (715) 359-9400
FAX: (715) 355-4199

general@cwengineers.com
www.cwengineers.com



CERTIFIED CORRECT:

Ronald K. Jacobson

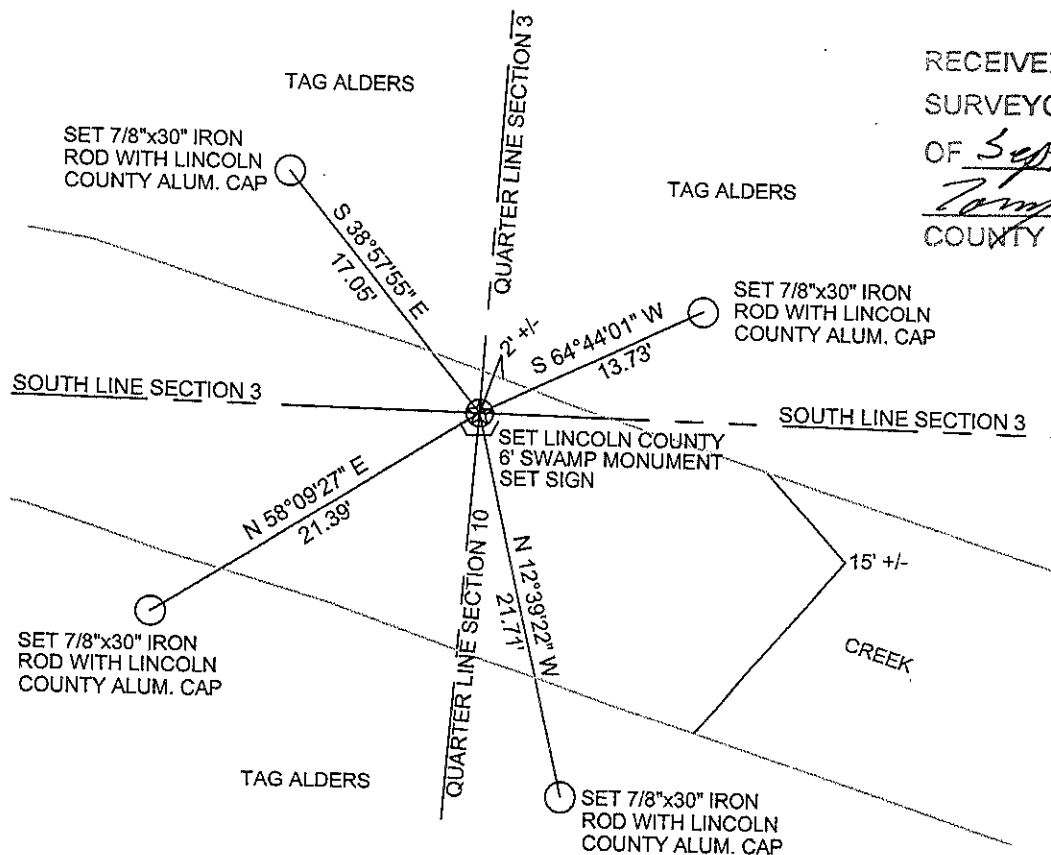
Ronald Jacobson RLS 2059-008

Registered Land Surveyor

DATE: September 26, 2008

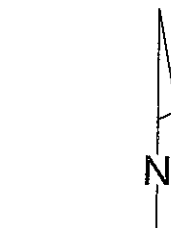
TIE SKETCH:

SHOW MINIMUM OF FOUR (4) HORIZONTAL TIE DISTANCES TO FIXED WITNESS MONUMENTS.
DESCRIBE ALL MONUMENTS FOUND OR SET. ALL DISTANCES SHOWN IN US SURVEY FEET.



RECEIVED BY LINCOLN COUNTY
SURVEYOR THIS 29TH DAY
OF September 20 08
Tom Dull
COUNTY SURVEYOR

COORDINATES ARE REFERENCED
TO LINCOLN COUNTY COORDINATE
SYSTEM AS DEVELOPED BY THE WI.
DEPARTMENT OF TRANSPORTATION
AND ARE BASED ON GPS OBSERVATIONS
- TO CONTROL POINTS AS SUPPLIED BY
LINCOLN COUNTY.



NOT TO SCALE
BEARINGS REFERENCED
TO LINCOLN COUNTY
COORDINATE SYSTEM

E-15

Picture 1 – Looking North From Corner



Picture 2 – Looking East From Corner



Picture 3 – Looking South From Corner



Picture 4 – Looking West From Corner



Picture 5 –Set 6' Swamp Monument at Corner, Set Sign

