

# LINCOLN COUNTY U.S. PUBLIC LAND TIE SHEET RECORD

SECTION 1  
TOWNSHIP 33N  
RANGE 4 E

13347  
NO.

LANDMARK

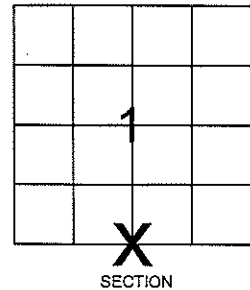
**CORNING**

CITY, VILLAGE, TOWN

CORNER INDENTITY: 1.5" IRON PIPE

LINCOLN COUNTY COORDINATE: N: 190604.733  
E: 330602.811

FOUND   
SET   
RE-SET   
RE-TIED

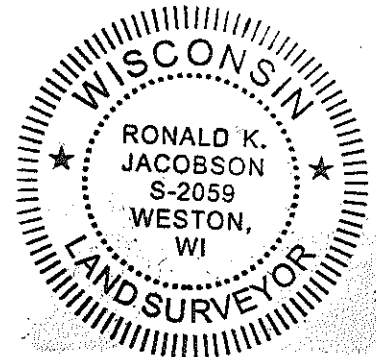


Description of monument found at this corner and if was accepted, state all evidence (material, testimonial, occupational, plats, records, other monuments) used as a basis for accepting. If not accepted or if nothing was found, state evidence used as basis for establishing location. If reestablished through lost corner proportionate methods, indicate all monuments, distances and directions used to establish.

## BASIS FOR MONUMENT LOCATION:

(DESCRIBE METHOD OF SURVEY AND CORNER AUTHENTICATION)

Found 1.5" Iron Pipe at corner. Yellow Lines, Blaze Lines, Property evidence, and comparison to the original notes supports the 1.5" Iron Pipe as corner.



CERTIFIED CORRECT:

*Ronald K. Jacobson*

Ronald Jacobson RLS 2059-008

Registered Land Surveyor

DATE: October 17, 2008



**CWE, Inc.**

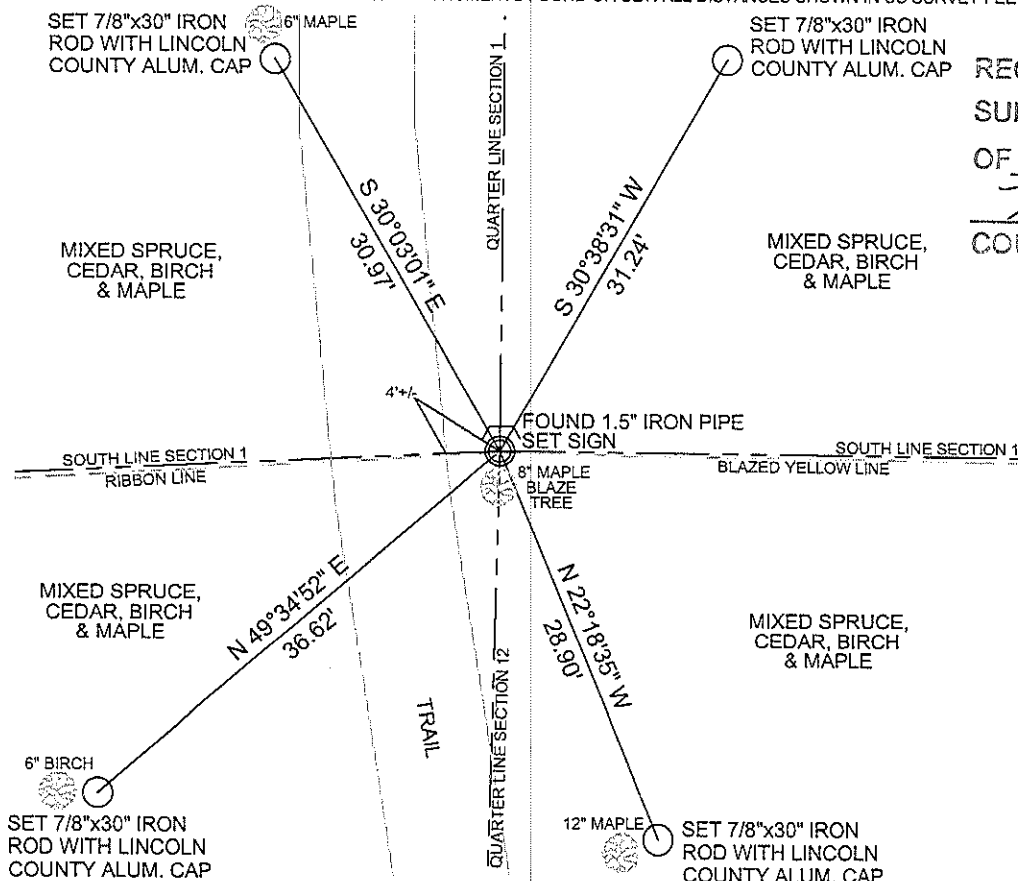
5707 SCHOFIELD AVE.  
WESTON, WISCONSIN  
54476

PHONE: (715) 359-9400  
FAX: (715) 355-4199

general@cwengineers.com  
www.cwengineers.com

## TIE SKETCH:

SHOW MINIMUM OF FOUR (4) HORIZONTAL TIE DISTANCES TO FIXED WITNESS MONUMENTS.  
DESCRIBE ALL MONUMENTS FOUND OR SET. ALL DISTANCES SHOWN IN US SURVEY FEET.



RECEIVED BY LINCOLN COUNTY  
SURVEYOR THIS 17<sup>TH</sup> DAY  
OF October 2008  
*Tommy Dall*  
COUNTY SURVEYOR

COORDINATES ARE REFERENCED TO LINCOLN COUNTY COORDINATE SYSTEM AS DEVELOPED BY THE WI. DEPARTMENT OF TRANSPORTATION AND ARE BASED ON GPS OBSERVATIONS TO CONTROL POINTS AS SUPPLIED BY LINCOLN COUNTY.

NOT TO SCALE  
BEARINGS REFERENCED  
LINCOLN COUNTY  
COORDINATE SYSTEM

6-23

Picture 1 – Looking North From Corner



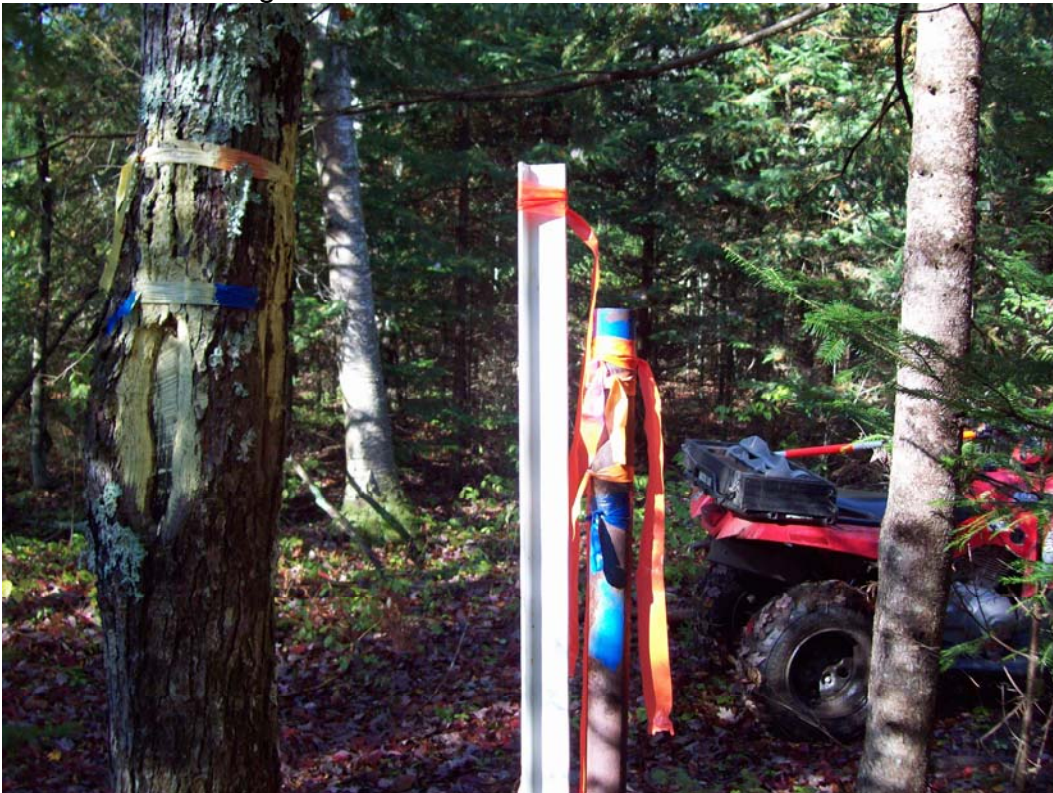
Picture 2 – Looking East From Corner at Blazed Yellow Line



Picture 3 – Looking South From Corner at Blaze Tree



Picture 4 – Looking West From Corner at Blaze Tree



Picture 5 – Found 1.5" Iron Pipe, Set Sign

