

LINCOLN COUNTY U.S. PUBLIC LAND TIE SHEET RECORD

SECTION 1
TOWNSHIP 33N
RANGE 4 E

13348
NO.

LANDMARK

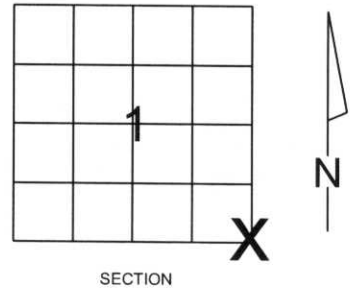
CORNING
CITY, VILLAGE, TOWN

CORNER INDENTITY: 6X6 GRANITE MONUMENT

LINCOLN COUNTY COORDINATE: N: 190581.824
E: 333236.761

DATE OF SURVEY: January 9, 2008
SURVEY PARTY: Eron/Rutzen

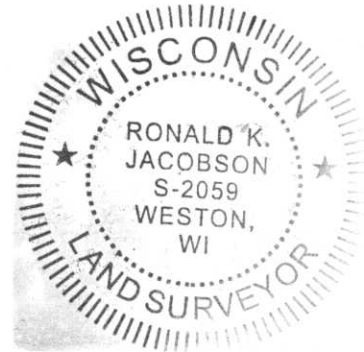
FOUND
SET
RE-SET
RE-TIED



Description of monument found at this corner and if was accepted, state all evidence (material, testimonial, occupational, plats, records, other monuments) used as a basis for accepting. If not accepted or if nothing was found, state evidence used as basis for establishing location. If reestablished through lost corner proportionate methods, indicate all monuments, distances and directions used to establish.

BASIS FOR MONUMENT LOCATION:

(DESCRIBE METHOD OF SURVEY AND CORNER AUTHENTICATION)
Found 6x6 Granite Monument and 1.5" Iron Pipe at corner. Yellow lines, Property evidence, and comparison to the original notes supports the 6x6 Granite Monument as corner.



CWE, Inc.

5707 SCHOFIELD AVE.
WESTON, WISCONSIN
54476

PHONE: (715) 359-9400
FAX: (715) 355-4199

general@cwengineers.com
www.cwengineers.com

CERTIFIED CORRECT:

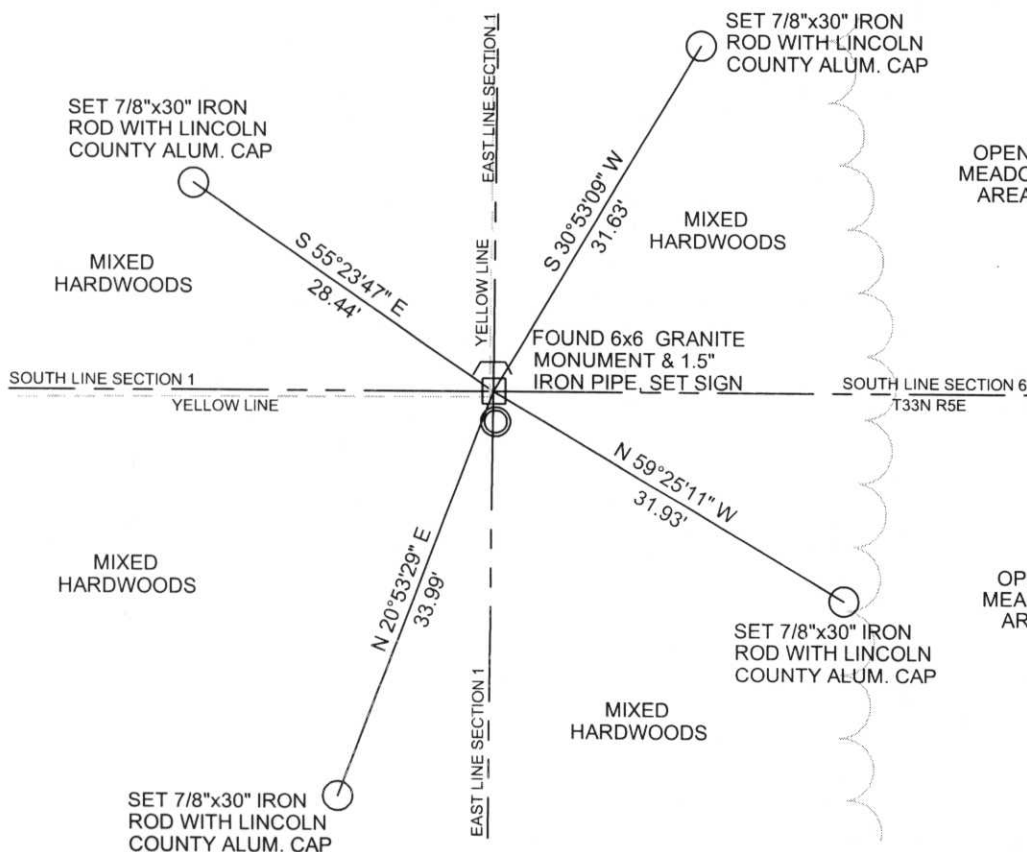
Ronald Jacobson
Ronald Jacobson RLS 2059-008

Registered Land Surveyor

DATE: January 11, 2008

TIE SKETCH:

SHOW MINIMUM OF FOUR (4) HORIZONTAL TIE DISTANCES TO FIXED WITNESS MONUMENTS. DESCRIBE ALL MONUMENTS FOUND OR SET. ALL DISTANCES SHOWN IN US SURVEY FEET.



RECEIVED BY LINCOLN COUNTY
SURVEYOR THIS 11TH DAY
OF January 20 08
Tommy Wall
COUNTY SURVEYOR

COORDINATES ARE REFERENCED TO LINCOLN COUNTY COORDINATE SYSTEM AS DEVELOPED BY THE WI. DEPARTMENT OF TRANSPORTATION AND ARE BASED ON GPS OBSERVATIONS TO CONTROL POINTS AS SUPPLIED BY LINCOLN COUNTY.

NOT TO SCALE
BEARINGS REFERENCED
TO LINCOLN COUNTY
COORDINATE SYSTEM

E-25

Picture 3 – Looking South From Corner



Picture 4 – Looking West From Corner at Yellow Line



Picture 5 –Found 6x6 Granite Stone Monument

