

LINCOLN COUNTY U.S. PUBLIC LAND TIE SHEET RECORD

SECTION 31
TOWNSHIP 33N
RANGE 4 E

313341

LANDMARK

CORNER INDENTITY: 2.0" IRON PIPE W/CAP

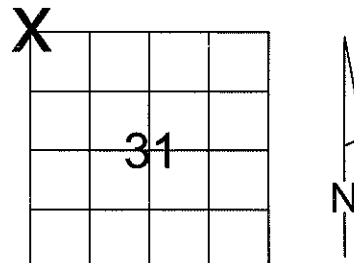
LINCOLN COUNTY COORDINATE: N: 169677.193
E: 300422.567

DATE OF SURVEY: December 10, 2007
SURVEY PARTY: Eron/Rutzen

CORNING
CITY, VILLAGE, TOWN

NO.

FOUND
SET
RE-SET
RE-TIED



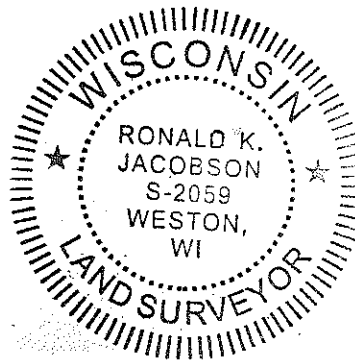
SECTION

Description of monument found at this corner and if was accepted, state all evidence (material, testimonial, occupational, plats, records, other monuments) used as a basis for accepting. If not accepted or if nothing was found, state evidence used as basis for establishing location. If reestablished through lost corner proportionate methods, indicate all monuments, distances and directions used to establish.

BASIS FOR MONUMENT LOCATION:

(DESCRIBE METHOD OF SURVEY AND CORNER AUTHENTICATION)

Found 2" iron pipe with cap at corner. Blue line, Property evidence, conversation with Taylor County Surveyor, and comparison to the original notes supports the 2" iron pipe as corner.



CERTIFIED CORRECT:

Ronald K. Jacobson

Ronald Jacobson RLS 2059-008

Registered Land Surveyor

DATE: December 14, 2007



CWE, Inc.

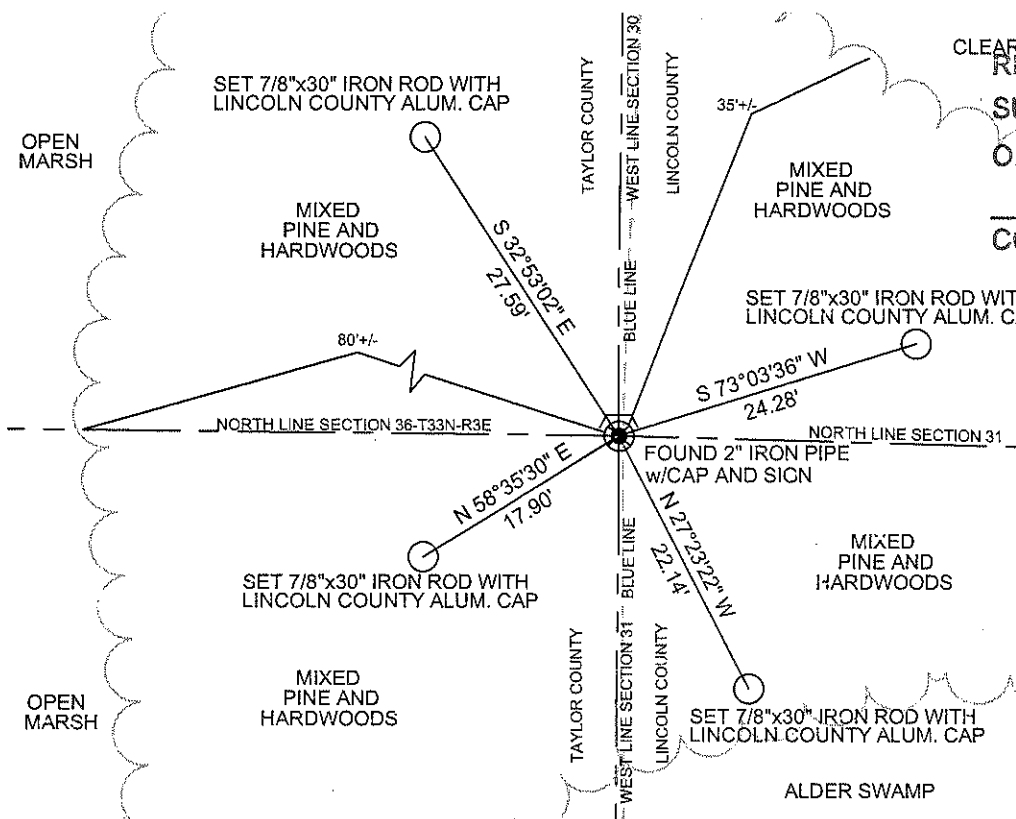
5707 SCHOFIELD AVE.
WESTON, WISCONSIN
54476

PHONE: (715) 359-9400
FAX: (715) 355-4199

general@cwengeers.com
www.cwengeers.com

TIE SKETCH:

SHOW MINIMUM OF FOUR (4) HORIZONTAL TIE DISTANCES TO FIXED WITNESS MONUMENTS.
DESCRIBE ALL MONUMENTS FOUND OR SET. ALL DISTANCES SHOWN IN US SURVEY FEET.



CLEARCUT
**RECEIVED BY LINCOLN COUNTY
SURVEYOR THIS 20TH DAY
OF December 20 07**
Tony Dahl
COUNTY SURVEYOR

COORDINATES ARE REFERENCED TO LINCOLN COUNTY COORDINATE SYSTEM AS DEVELOPED BY THE WI. DEPARTMENT OF TRANSPORTATION AND ARE BASED ON GPS OBSERVATIONS TO CONTROL POINTS AS SUPPLIED BY LINCOLN COUNTY.

NOT TO SCALE
BEARINGS REFERENCED TO LINCOLN COUNTY COORDINATE SYSTEM

1-10

Picture 1 – Looking North From Corner at Blue Line



Picture 2 – Looking East From Corner



Picture 3 – Looking South From Corner at Blue Line



Picture 4 – Looking West From Corner



Picture 5 –Found 2.0 Iron Pipe with Stamped Cap at corner

