

LINCOLN COUNTY U.S. PUBLIC LAND TIE SHEET RECORD

SECTION 18
TOWNSHIP 33N
RANGE 4 E

183344
NO.

CORNING
CITY, VILLAGE, TOWN

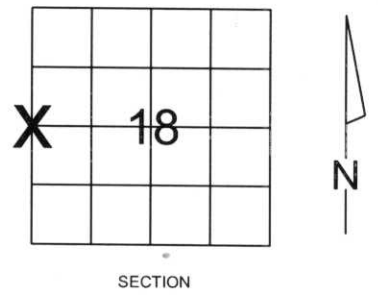
LANDMARK

CORNER INDENTITY: 2.0" IRON PIPE W/CAP

LINCOLN COUNTY COORDINATE: N: 182882.305
E: 300621.962

DATE OF SURVEY: December 12, 2007
SURVEY PARTY: Eron

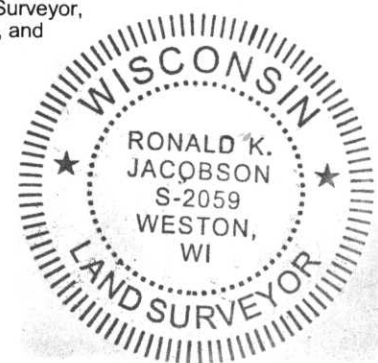
FOUND
SET
RE-SET
RE-TIED



Description of monument found at this corner and if was accepted, state all evidence (material, testimonial, occupational, plats, records, other monuments) used as a basis for accepting. If not accepted or if nothing was found, state evidence used as basis for establishing location. If reestablished through lost corner proportionate methods, indicate all monuments, distances and directions used to establish.

BASIS FOR MONUMENT LOCATION:

(DESCRIBE METHOD OF SURVEY AND CORNER AUTHENTICATION)
Found 2" iron pipe with cap at corner. Blue line, Property evidence, conversation with Taylor County Surveyor, comparison to A.W. Kordick's notes, comparison to the Wisconsin Conservation Commission's Notes, and comparison to the original notes supports the 2" iron pipe as corner.



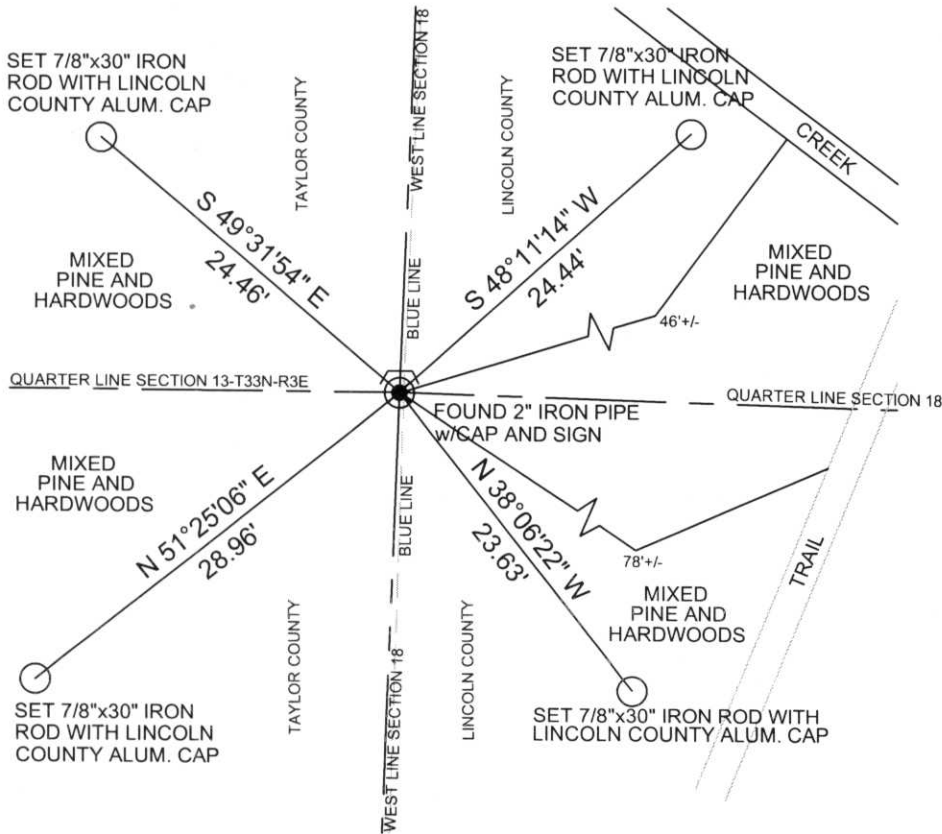
CWE, Inc.
5707 SCHOFIELD AVE.
WESTON, WISCONSIN 54476
PHONE: (715) 359-9400
FAX: (715) 355-4199
general@cwengineers.com
www.cwengineers.com

CERTIFIED CORRECT:

Ronald Jacobson RLS 2059-008
Registered Land Surveyor
DATE: December 19, 2007

TIE SKETCH:

SHOW MINIMUM OF FOUR (4) HORIZONTAL TIE DISTANCES TO FIXED WITNESS MONUMENTS.
DESCRIBE ALL MONUMENTS FOUND OR SET. ALL DISTANCES SHOWN IN US SURVEY FEET.



RECEIVED BY LINCOLN COUNTY
SURVEYOR THIS 20TH DAY
OF December 20 07

COUNTY SURVEYOR

COORDINATES ARE REFERENCED TO LINCOLN COUNTY COORDINATE SYSTEM AS DEVELOPED BY THE WI. DEPARTMENT OF TRANSPORTATION AND ARE BASED ON GPS OBSERVATIONS TO CONTROL POINTS AS SUPPLIED BY LINCOLN COUNTY.

NOT TO SCALE
BEARINGS REFERENCED TO LINCOLN COUNTY COORDINATE SYSTEM

K-1

Picture 1 – Looking North From Corner



Picture 2 – Looking East From Corner



Picture 3 – Looking South From Corner



Picture 4 – Looking West From Corner



Picture 5 –Found 2.0 Iron Pipe with Stamped Cap at Corner

