

Attachment to Tie Sheet Y-23, T32N, R8E

I visited corner on 08/02/2013; Book 6, pg. 48. Corner monument and all reference ties shown on tie sheet dated 06/29/2004 were found intact*.

NOTES

- * **SE Rebar reference tie** now measures **40.74'** due to fallen Aspen tree.
- RIPCO Iron Pipe Corner Monument was found protruding +/-20" above the ground surface and is located +/-18' north of woods road.

Anthony R. Dallman 7/31/15

Anthony R. Dallman, PLS-2405

Lincoln County Surveyor



U.S. PUBLIC LAND SURVEY MONUMENT RECORD

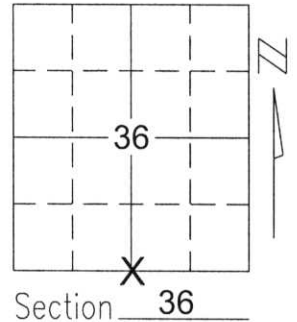
Note: This form is intended and designed to fulfill all requirements of Wisconsin Administrative Code, Chapter A-E 5.02, U.S. Public Land Survey Monument Record (3)(a)(b)(c)(d)(e)(f)(g)(h)(i). An additional sheet may be added if necessary to conform with said requirements.

(a) Corner location: Township 32 North

Range 8 East

Town/City/Village SCHLEY

County LINCOLN

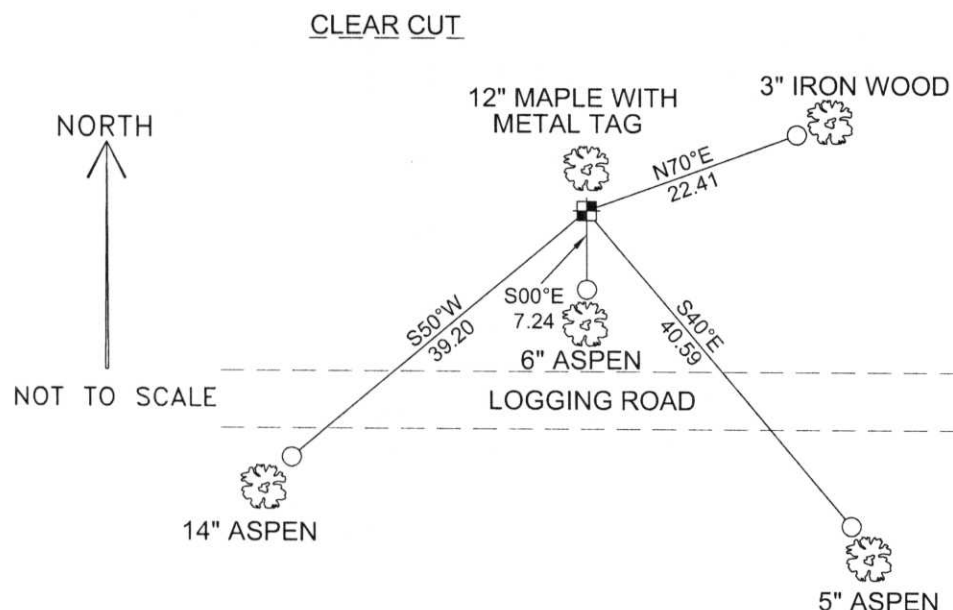


(b)(f)(g)(h) Description of monument found at this corner and if it was accepted, state all evidence (material, testimonial, occupational, plats, records, other monuments) used as a basis for accepting. If not accepted or if nothing was found, state evidence used as basis for establishing location. If reestablished through lost corner proportionate methods, indicate all monuments, distances and directions used to establish.

SEARCHED FOR CORNER AND FOUND RIPCO 2" IRON PIPE WITH CAP MARKED S1/4 36, N1/4 1. FOUND NO EVIDENCE OF STONE HELD RIPCO MONUMENT AS BEST AVAILABLE EVIDENCE. ACCEPTED AS CORNER AND TIED OUT TO PERPETUATE CORNER LOCATION.

RECEIVED BY LINCOLN COUNTY
SURVEYOR THIS 20TH DAY
OF August 20 04
Tony Dahl
COUNTY SURVEYOR

(c)(d)(e) Plan view of corner with ties to at least 4 witness monuments. If in disagreement with previously established corner, show the distances between the two corners and also indicate the ties to the disputed corner.



COORDINATES ARE REFERENCED TO THE LINCOLN COUNTY COORDINATE SYSTEM AS DEVELOPED BY THE WISCONSIN DEPARTMENT OF TRANSPORTATION AND WERE DETERMINED BY GPS OBSERVATIONS ON CONTROL POINTS AS SUPPLIED BY LINCOLN COUNTY.

BEARINGS ARE REFERENCED TO MAGNETIC NORTH.

N - 132048.676
E - 457714.823

○ - SET 3/4" x 30" REBAR W/ ALUM CAP AT BASE OF BEARING TREE

⊠ - SOUTH 1/4 CORNER FOUND 2" IRON PIPE WITH CAP

(i) I, David A. Renaud, RLS S-2142, certify that the corner location on this record was determined by me or under my direction and control and that this U.S. Public Land Survey Monument Record is correct and complete to the best of my knowledge and belief.

David Renaud
Signature

6-29-04
Date



Index No. 363287

Y-23