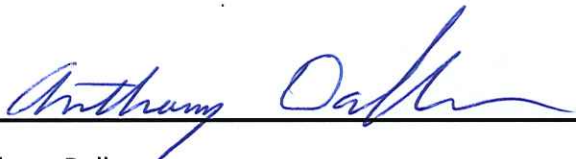


# Attachment to Tie Sheet A-9 T31N, R8E

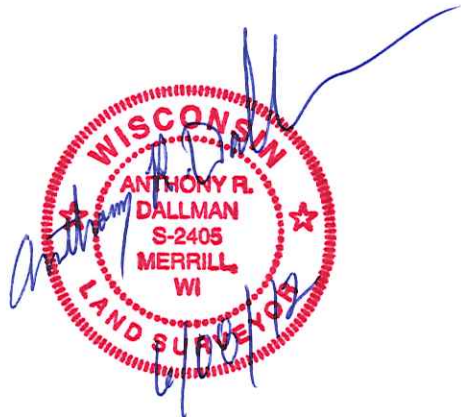
Visited this corner on May 21, 2012 and found all of the Reference Monuments in good condition. The Corner Monument was gone. Set a Bernsten Monument at the Corner position per the Tie Sheet. Set a white "T" Post near the Northeast Reference Monument. Field Book #5 Page 136.



6/08/12

Anthony Dallman

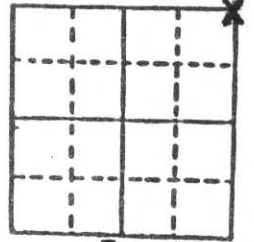
Lincoln County Surveyor



# U.S. PUBLIC LAND SURVEY MONUMENT RECORD

**Note:** This form is intended and designed to fulfill all requirements of Wisconsin Administrative Code, Chapter A-E 5.02, U.S. Public Land Survey Monument Record (3) (a) (b) (c) (d) (e) (f) (g) (h) (i). An additional sheet may be added if necessary to conform with said requirements.

(a) Corner location: Township 31 North  
 Range 8 East



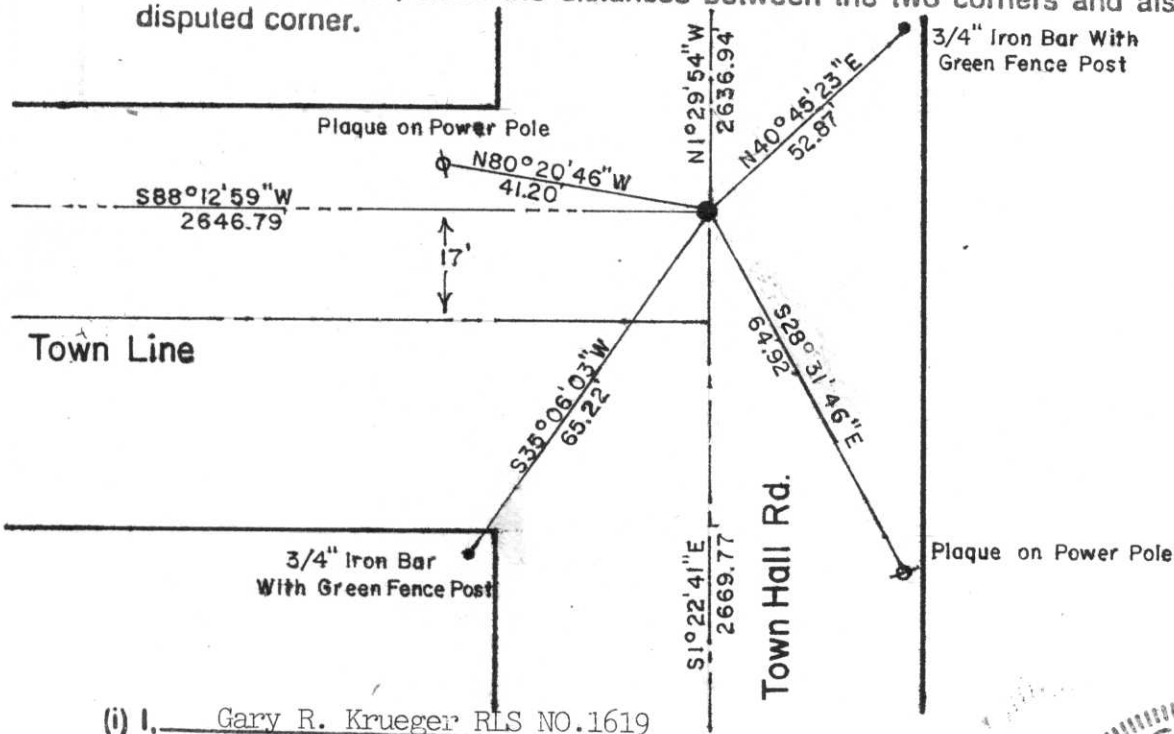
Section 5

Town Pine River  
 County Lincoln

b) (f) (g) (h) Description of monument found at this corner and if it was accepted, state all evidence (material, testimonial, occupational, plats, records, other monuments) used as a basis for accepting. If not accepted or if nothing was found, state evidence used as basis for establishing location. If reestablished through lost corner proportionate methods, indicate all monuments, distances and directions used to establish.

Area was excavated by others according to local resident and no evidence of corner was found. Corner was established after extensive traverse of Section was completed locating all existing corners, road centerlines, and fence lines and this field work compared to original notes. Set 1 3/16" x 30" iron bar.

c) (d) (e) Plan view of corner with ties to at least 4 witness monuments. If in disagreement with previously established corner, show the distances between the two corners and also indicate the ties to the disputed corner.



(i) I, Gary R. Krueger RLS NO.1619  
 (type or print name) certify that the corner location on this record was determined by me or under my direction and control and that this U.S. Public Land Survey Monument Record is correct and complete to the best of my knowledge and belief.

Gary R. Krueger  
 Signature

11-2-90  
 Date



Index No. A-9









DEAD  
END



LDC-4

