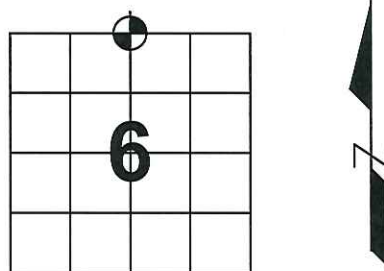


U.S. PUBLIC LAND SURVEY MONUMENT RECORD

Note: This form is intended and designed to fulfill all requirements of Wisconsin Administrative Code, Chapter A-E 7.08, U.S. Public Land Survey Monument Record (3) (a) (b) (c) (d) (e) (f) (g) (h) (i). An additional sheet may be added if necessary to conform with said requirements.

(a) Corner location: Township 31 North
 Range 8 East
 Town/~~City~~/~~Village~~ Pine River
 County Lincoln



(b) (f) (g) (h) Description of monument found at this corner and if it was accepted, state all evidence (material, testimonial, occupational, plats, records, other monuments) used as basis for accepting. If not accepted or if nothing was found, state evidence used as basis for establishing location. If reestablished through lost corner proportionate methods, indicate all monuments, distances and directions used to establish.

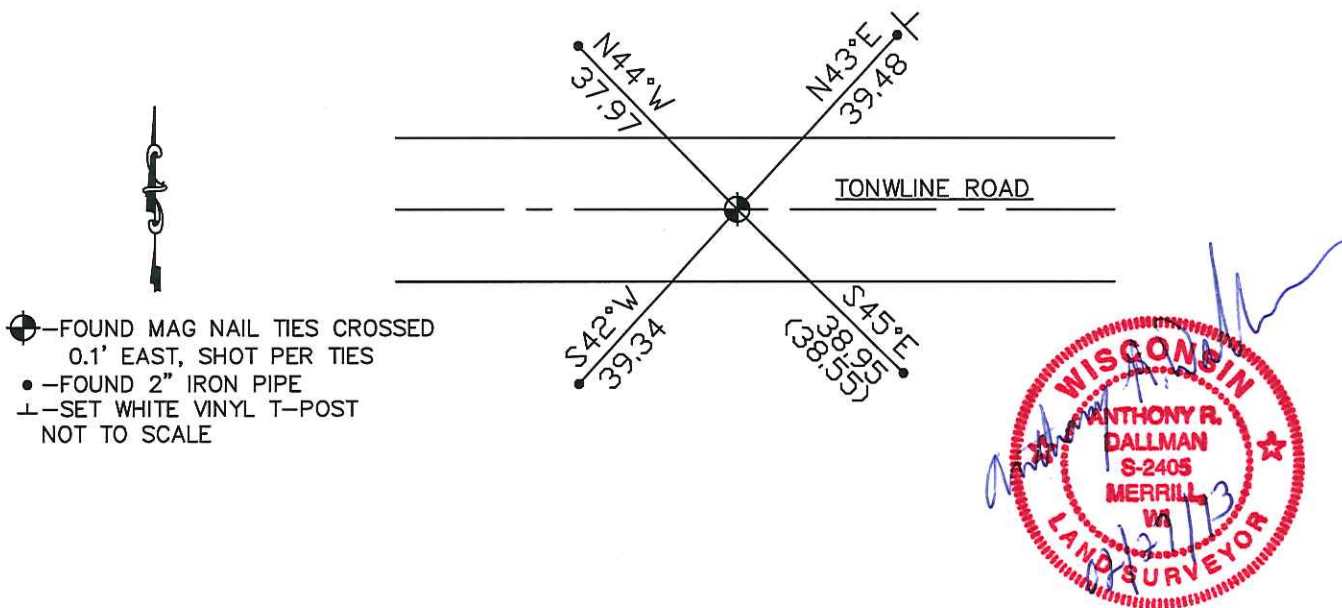
July 1851 – Marsh, James M. Set post for Quarter Section Corner

- Birch 16 N60°E 66 Lks
- Birch 12 S27°E 48 Lks
- Sugar 8 S10°W 6 Lks
- Sugar 8 N01°W 24 Lks

Aug. 1992 – Mosher, LaVerne H. "A cornerstone had been dug for and recovered by Town of Pine River personnel during reconstruction of Town Line Road. A local resident, Albert Schumacher had placed a 1/2" iron pipe along the monument about 18 inches below gravel roadway surface. Top of stone had been broken off so we chiseled a new "x" in top center of monument; tied out same and set a 1"x15" iron pipe directly over stone.

May 2012 – Dallman, Anthony R. Found Mag Nail in CL of Townline Road, Magnail falls 0.1' East of Mosher's ties. GPS'd per ties. Southeast tie differed from Mosher's tie sheet, retied with new distance (see new tie below), held all other existing ties.

(c) (d) (e) Plan view of corner with ties to at least 4 witness monuments. If in disagreement with previously established corner, show the distance between the two corners and also indicate the ties to the disputed corner.



- ⊕—FOUND MAG NAIL TIES CROSSED
0.1' EAST, SHOT PER TIES
- FOUND 2" IRON PIPE
- ⊥—SET WHITE VINYL T-POST
NOT TO SCALE

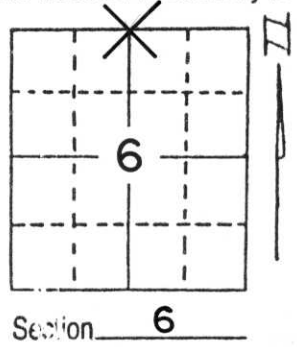
(i) I, Anthony R. Dallman
 (type or print name) certify that the corner location on this record was determined by me or under my direction and control and that this U.S. Public Land Survey Monument Record is correct and complete to the best of my knowledge and belief.

Anthony R. Dallman Signature 02/27/13 Date

U.S. PUBLIC LAND SURVEY MONUMENT RECORD

Note: This form is intended and designed to fulfill all requirements of Wisconsin Administrative Code, Chapter A-E 5.02, U.S. Public Land Survey Monument Record (3) (a) (b) (c) (d) (e) (f) (g) (h) (i). An additional sheet may be added if necessary to conform with said requirements.

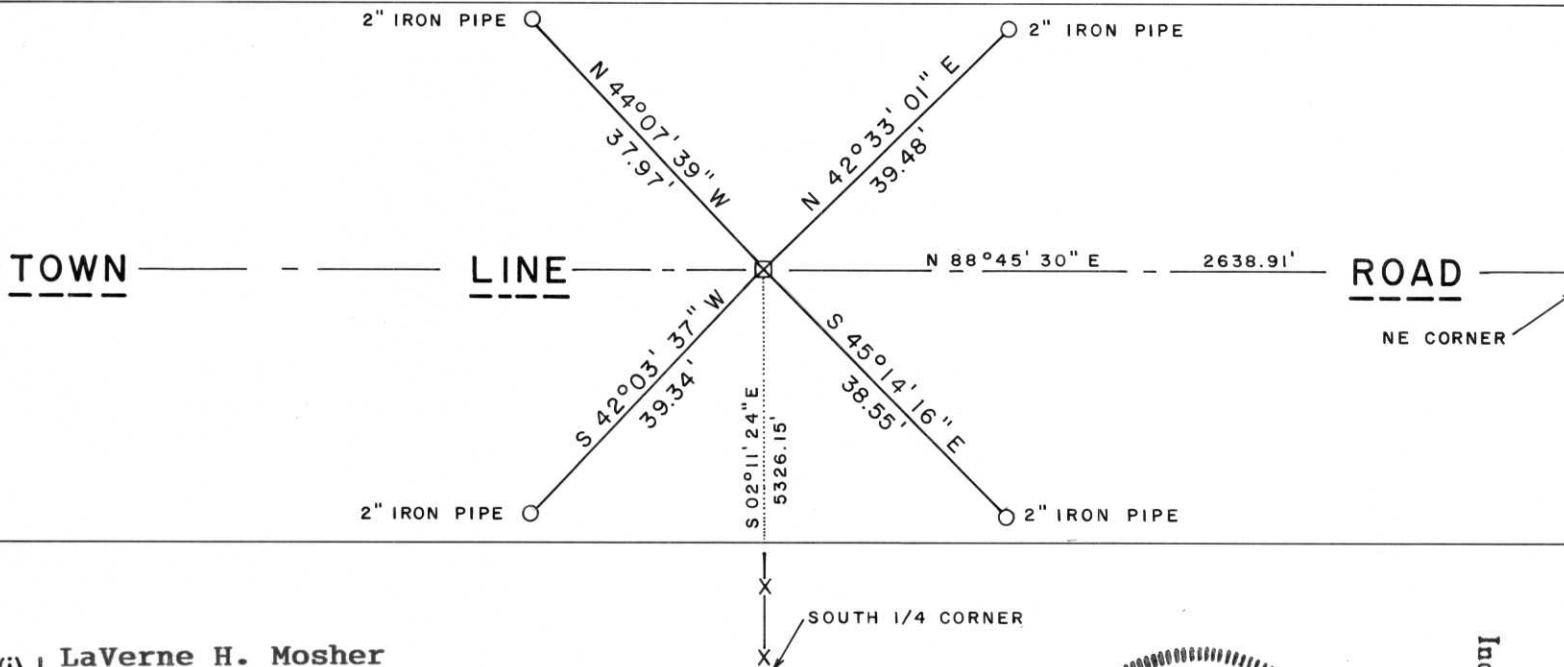
(a) Corner location: Township 31 North
 Range 8 East
 Town/City/Village PINE RIVER
 County LINCOLN



(b) (f) (g) (h) Description of monument found at this corner and if it was accepted, state all evidence (material, testimonial, occupational, plats, records, other monuments) used as a basis for accepting. If not accepted or if nothing was found, state evidence used as basis for establishing location. If reestablished through lost corner proportionate methods, indicate all monuments, distances and directions used to establish. A **cornerstone had been dug for and recovered by Town of Pine River personnel during reconstruction of Town Line Road. A local resident, Albert Schumacher had placed a 1/2" iron pipe along the South face of the stone. Using hand tools, we uncovered a 6" x 7" Red Granite monument about 18 inches below gravel roadway surface. Top of stone had been broken off so we chiselled a new "X" in top center of monument; tied out same and set a 1" x 15" iron pipe directly over stone.**

(c) (d) (e) Plan view of corner with ties to at least 4 witness monuments. If in disagreement with previously established corner, show the distances between the two corners and also indicate the ties to the disputed corner.

Note: Tie bearings referenced to Section line Bearing.



(i) I, LaVerne H. Mosher
 (type or print name) certify that the corner location on this record was determined by me or under my direction and control and that this U.S. Public Land Survey Monument Record is correct and complete to the best of my knowledge and belief.

LaVerne H. Mosher
 Signature

AUGUST 7, 1992
 Date



Index No. A-3









