

U.S. PUBLIC LAND SURVEY MONUMENT RECORD

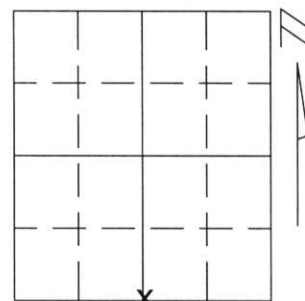
Note: This form is intended and designed to fulfill all requirements of Wisconsin Administrative Code, Chapter A-E 5.02, U.S. Public Land Survey Monument Record (3)(a)(b)(c)(d)(e)(f)(g)(h)(i). An additional sheet may be added if necessary to conform with said requirements.

(a) Corner location: Township 32 North

Range 8 East

Town/City/Village SCHLEY

County LINCOLN



Section 26

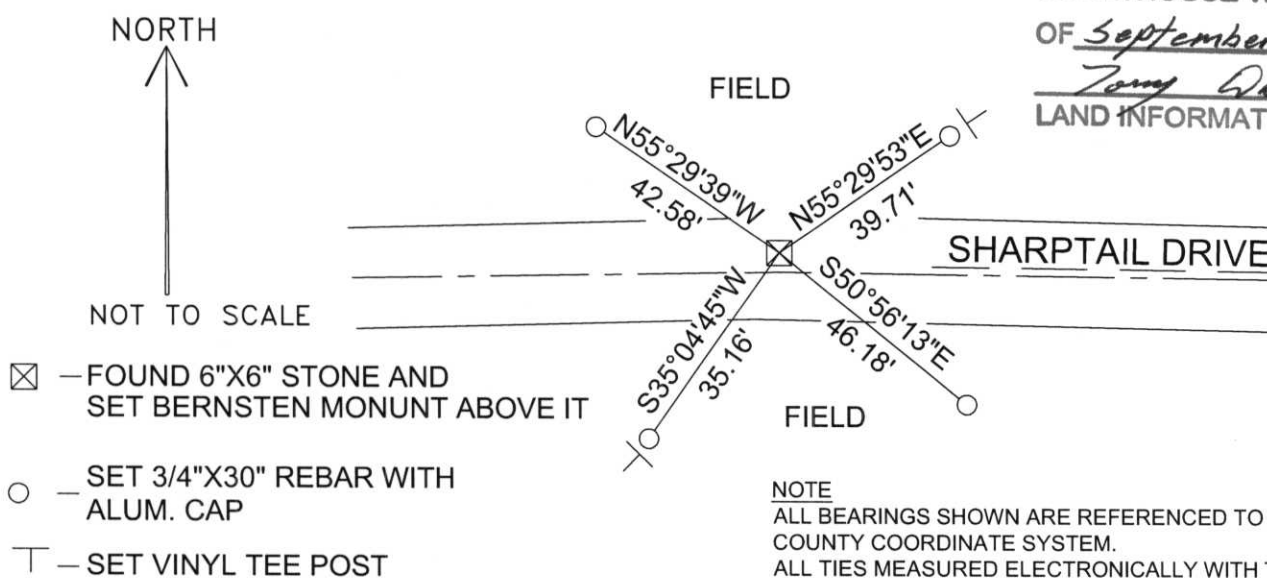
(b)(f)(g)(h) Description of monument found at this corner and if it was accepted, state all evidence (material, testimonial, occupational, plats, records, other monuments) used as a basis for accepting. If not accepted or if nothing was found, state evidence used as basis for establishing location. If reestablished through lost corner proportionate methods, indicate all monuments, distances and directions used to establish.

I found 6"x6" stone below the road surface about 4 feet. I then place a Bernsten Monument above the stone about 1 foot below the road surface. I accepted the stone as best evidence of the corner location and perpetuated it as shown below.

(c)(d)(e) Plan view of corner with ties to at least 4 witness monuments. If in disagreement with previously established corner, show the distances between the two corners and also indicate the ties to the disputed corner.

SOUTH 1/4 CORNER 26

RECEIVED AT LINCOLN COUNTY
 COURTHOUSE THIS 26TH DAY
 OF September 20 03
Tom Dell
 LAND INFORMATION OFFICE



NOTE
 ALL BEARINGS SHOWN ARE REFERENCED TO LINCOLN COUNTY COORDINATE SYSTEM.
 ALL TIES MEASURED ELECTRONICALLY WITH TOTAL STATION.

(i) I, Kyle R. Fischer
 (type or print name) certify that the corner location on this record was determined by me or under my direction and control and that this U.S. Public Land Survey Monument Record is correct and complete to the best of my knowledge and belief.

Kyle R. Fischer
 Signature

Sept 17, 2003
 Date

