

# LANGLADE COUNTY U.S. PUBLIC LAND CORNER RESTORATION

The West 1/4 corner of Section 30, T 32 N., R 9 E, Langlade County, WI. *E1/4 cr Sec 25-32-8*

**Corner was: (check all that apply)**

3208252000

- Restored through acceptance of an obliterated evidence location.
- Restored through acceptance of a found perpetuated location.
- Determined to be lost and re-established through proportionate methods.  
(Show bearings and distances to PLSS corners used for proportioning, and show original distances).
- Restored/recovered/re-established in a location that differs from a previously established position.  
(Show difference in plan view below).
- Check here if addition information is shown on the reverse side of this form.

**Describe record evidence, recovered physical evidence, occupational evidence, testimonial evidence and all other evidence considered in the recovery/restoration of the corner.**

The original corner was established in 1851 by James M. Marsh. Original bearing trees: birch, 8", S21°E, 21 lks.; elm, 8", S13°W, 30 lks.; sugar, 15", N80°W, 32 lks., and a birch, 10", N62°E, 20 links.

In 1906, E.S. Brooks, county surveyor, surveyed the E-W 1/4 line in Section 30 and found 3 orig. BT's at this corner. In 1981, former surveyor Wm. Kelly found 6" x 6" granite stone and set 1 1/2" iron pipe witness monuments 33' E & W of the corner. 11/08/99 Dave Tlusty, Dean Williams found 6" square granite stone with chiseled "+" on top, upright in road, about 0.7' down. Found 1" iron pipe on south edge of stone, leaning over top of stone. Accepted stone as found as the best evidence of the corner location and perpetuated it as shown below.

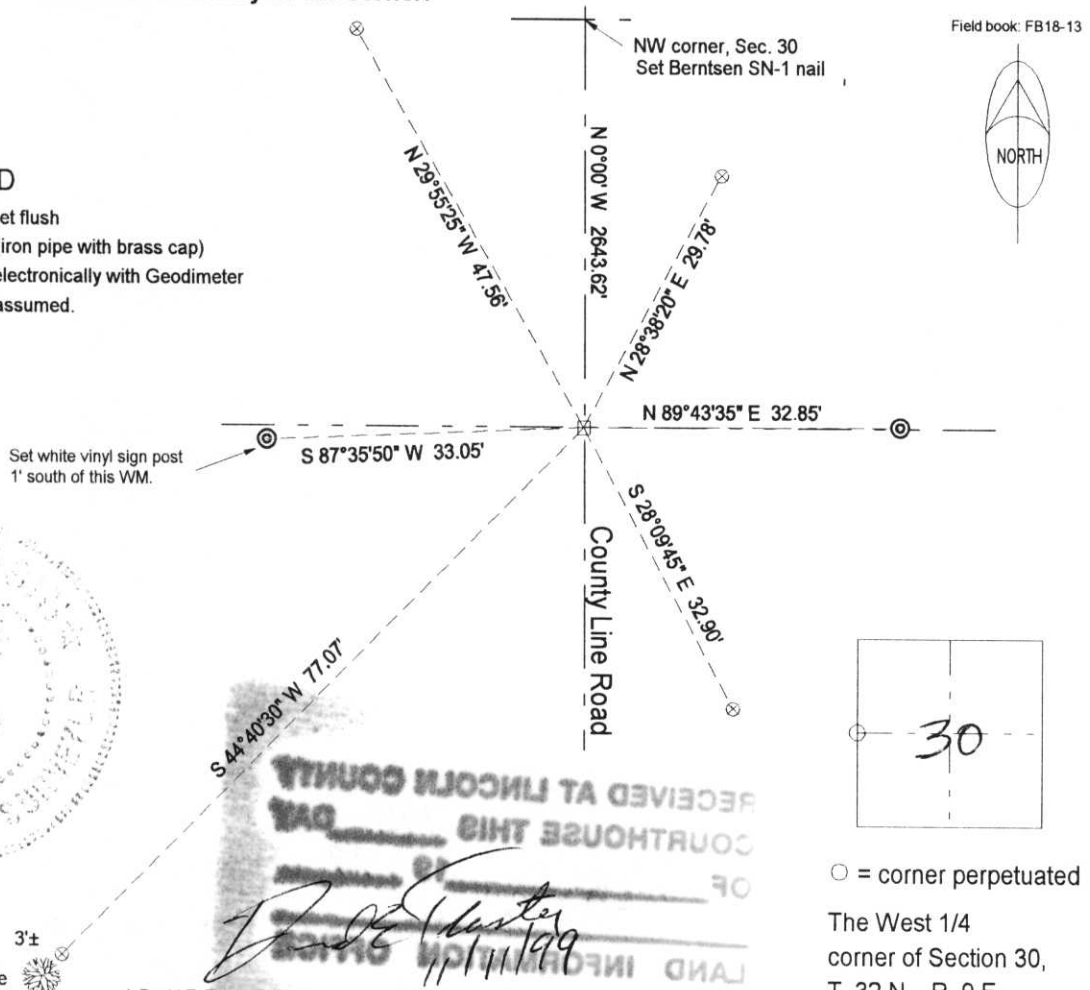
**Physical description of the monument set:**

Left existing stone monument in place as found.

**Describe the accessories used to perpetuate the corner. Include a plan view drawing and accessories found/set. Describe measuring point on bearing trees. Show any topographic features that would aid in future recovery of the corner.**

**LEGEND**

- ⊗ 3/4" x 30" rebar set flush
- ⊙ Kelly WM found (iron pipe with brass cap)
- Ties measured electronically with Geodimeter
- Section line bearing assumed.



RECEIVED AT LINCOLN COUNTY COURTHOUSE THIS DAY OF \_\_\_\_\_ 11/11/99

I, David E. Tlusty, Registered Land Surveyor, as Langlade County Surveyor, certify that the corner location on this record was determined by me and that this U.S. Public Land Survey Monument Record is correct to the best of my knowledge and belief.

○ = corner perpetuated  
The West 1/4 corner of Section 30, T. 32 N., R. 9 E., Langlade County, WI

Index No. T1 32-09

S-25