

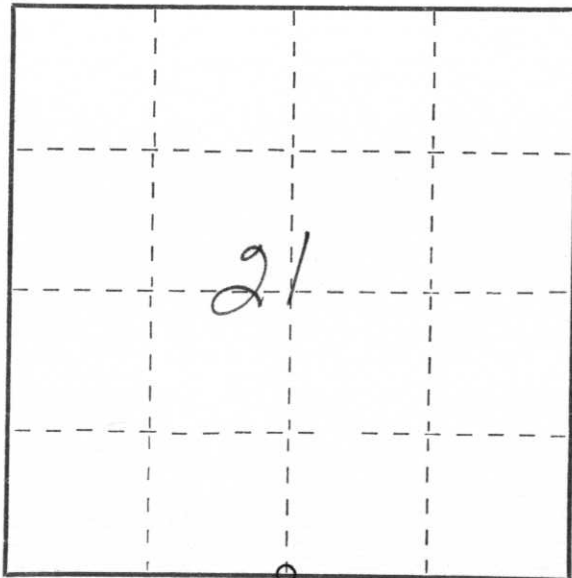
CERTIFIED LAND CORNER RESTORATION

Index No. Q-11

State of Wisconsin }
County of LINCOLN } ss.

I EDWIN R. ABENDROTH, do hereby certify that on the 28 day of NOVEMBER, 19 79, I found evidence of the S 1/4 corner of SEC. 21 Township 32, North, Range 8 E, Fourth, Principal Meridian, as described hereon; and that from this evidence I established a new monument and accessories as described hereon to perpetuate the original location of this corner.

Resident witnesses:



○ = Corner monument restored.

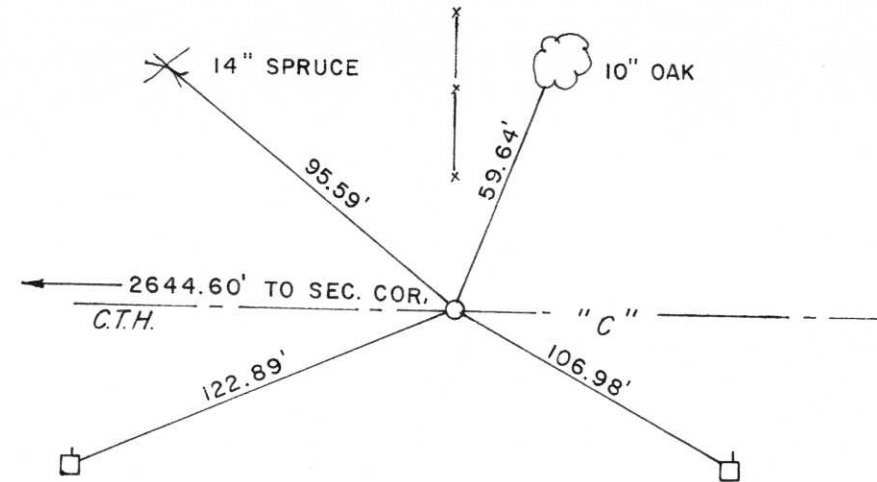
History of original corner establishment:

1/4 Section Post set & witness trees, referenced in original Government Survey. No later history of corner discovered.

Description of corner evidence found:

Dug with backhoe at location. Town supervisor thought corner should be. He had no knowledge of anyone discovering corner.

Description of monument and accessories I established to perpetuate the original location of this corner. Set Berntsen Monument as shown above after measuring Section 21 to compare Government Notes. Set Berntsen Monument at intersection of Road center line and fence line.



Dated at Wausau, Wis., this 29th day of November, 19 79.

Signature Edwin R. Abendroth Title R.L.S. Registration No. S-798
(County Surveyor, Registered Land Surveyor, or other duly authorized official)

Office of Register of Deeds, County of _____, I hereby certify that the within instrument was filed in this office for record on the _____ day of _____, 19 _____ at _____ o'clock _____ M.

(Register of Deeds)

By _____ Deputy

U.S. PUBLIC LAND SURVEY MONUMENT RECORD

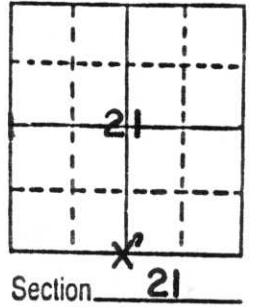
Note: This form is intended and designed to fulfill all requirements of Wisconsin Administrative Code, Chapter A-E 5.02, U.S. Public Land Survey Monument Record (3) (a) (b) (c) (d) (e) (f) (g) (h) (i). An additional sheet may be added if necessary to conform with said requirements.

(a) Corner location: Township 32 North

Range 8 East

Town SCHLEY

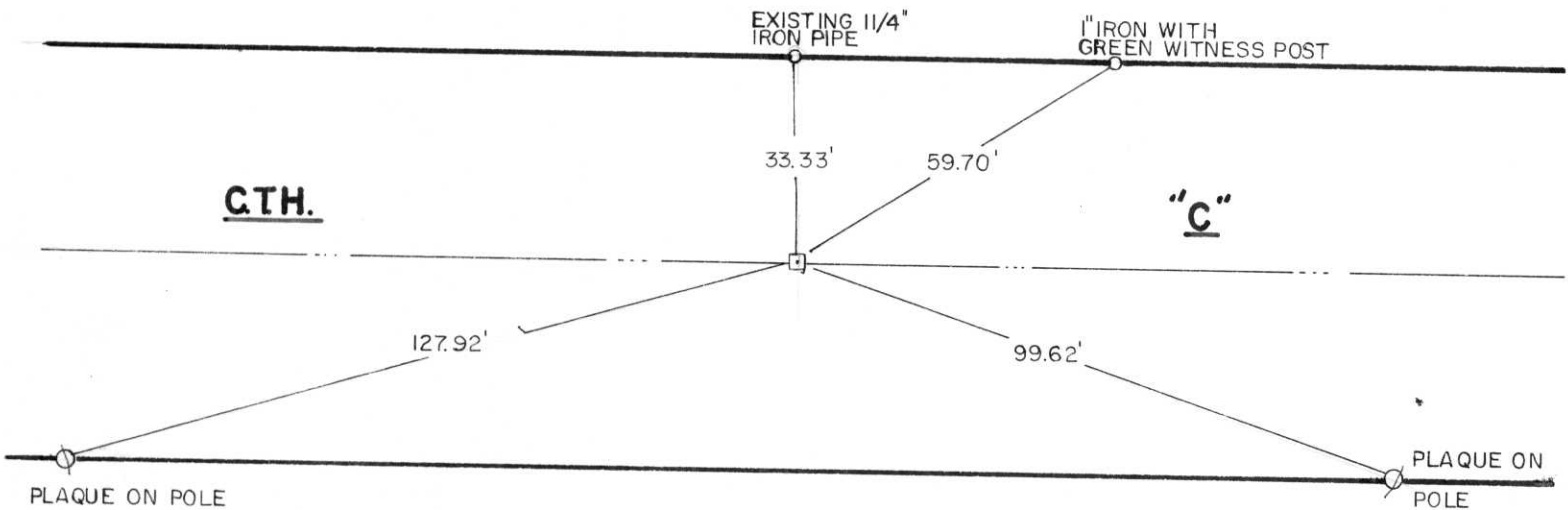
County LINCOLN



b) (f) (g) (h) Description of monument found at this corner and if it was accepted, state all evidence (material, testimonial, occupational, plats, records, other monuments) used as a basis for accepting. If not accepted or if nothing was found, state evidence used as basis for establishing location. If reestablished through lost corner proportionate methods, indicate all monuments, distances and directions used to establish.

Re-tied this corner because ties were destroyed by road construction. had been tied by Ed Abendroth in 1979.

c) (d) (e) Plan view of corner with ties to at least 4 witness monuments. If in disagreement with previously established corner, show the distances between the two corners and also indicate the ties to the disputed corner.



(i) I, Chester J. Nowaczyk
(type or print name) certify that the corner location on this record was determined by me or under my direction and control and that this U.S. Public Land Survey Monument Record is correct and complete to the best of my knowledge and belief.

Chester J. Nowaczyk 11-20-87
Signature Date

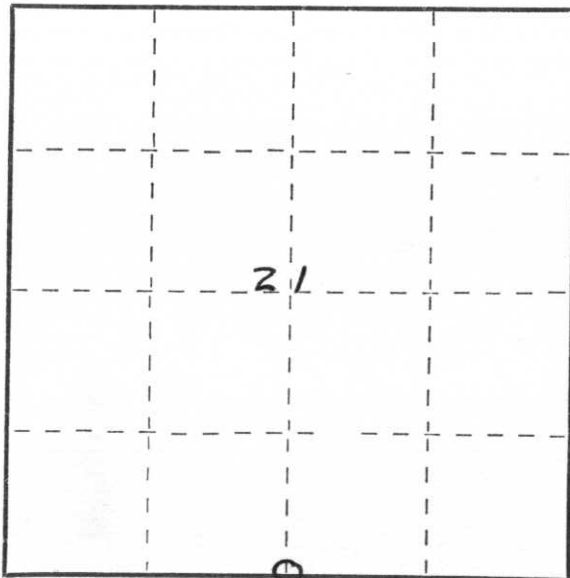


Index No. Q-11

State of Wisconsin }
County of Lincoln } ss.

I Duane A. Gau, do hereby certify that on the 18th day of August, 1980, I found evidence of the S $\frac{1}{4}$ corner of Section 21 Township 32 North, Range 8E, Fourth, Principal Meridian, as described hereon; and that from this evidence I established a new monument and accessories as described hereon to perpetuate the original location of this corner.

Resident witnesses:

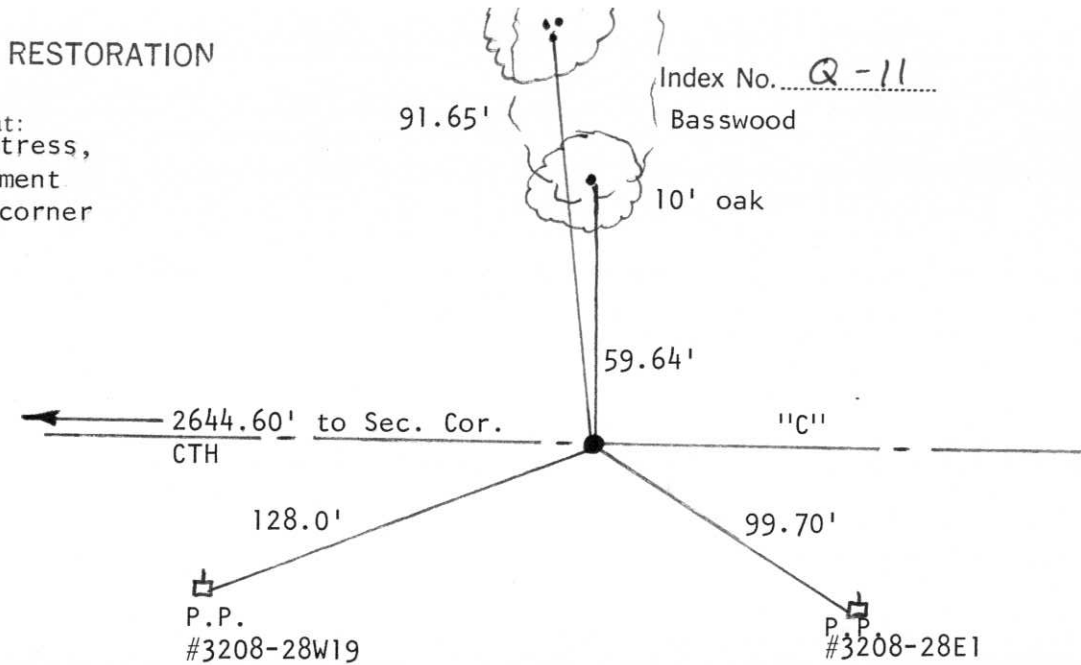


○ = Corner monument restored.

CERTIFIED LAND CORNER RESTORATION

History of original corner establishment:
 $\frac{1}{4}$ Section Post set & witness tress, referenced in original government survey. No later history of corner discovered.

Description of corner evidence found:
Found witness ties set by Edwin R. Abendroth & found $\frac{1}{4}$ corner he set.



Description of monument and accessories I established to perpetuate the original location of this corner.
Reset Berntsun monument as shown above and new witness ties from Edwin R. Abendroth notes, because of higher restrictions set Berntsun monument at intersection of road, center and north tree line.

Dated at Merrill, Wis., this 18th day of August, 1980.

Signature Duane A. Gau Title Lincoln Cty. Hwy. Commissioner Registration No. _____
(County Surveyor, Registered Land Surveyor, or other duly authorized official)

Office of Register of Deeds, County of _____, I hereby certify that the within instrument was filed in this office for record on the _____ day of _____, 19____, at _____ o'clock _____ M.

(Register of Deeds)

By _____ Deputy