

U.S. PUBLIC LAND SURVEY MONUMENT RECORD

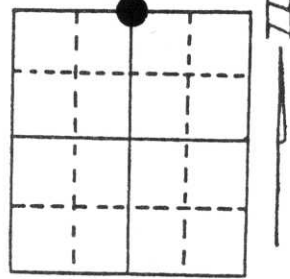
Note: This form is intended and designed to fulfill all requirements of Wisconsin Administrative Code, Chapter A-E 5.02, U.S. Public Land Survey Monument Record (3) (a) (b) (c) (d) (e) (f) (g) (h) (i). An additional sheet may be added if necessary to conform with said requirements.

(a) Corner location: Township 32 North

Range 8 East

Town/City/Village TOWN OF SCHLEY

County LINCOLN



Section 29

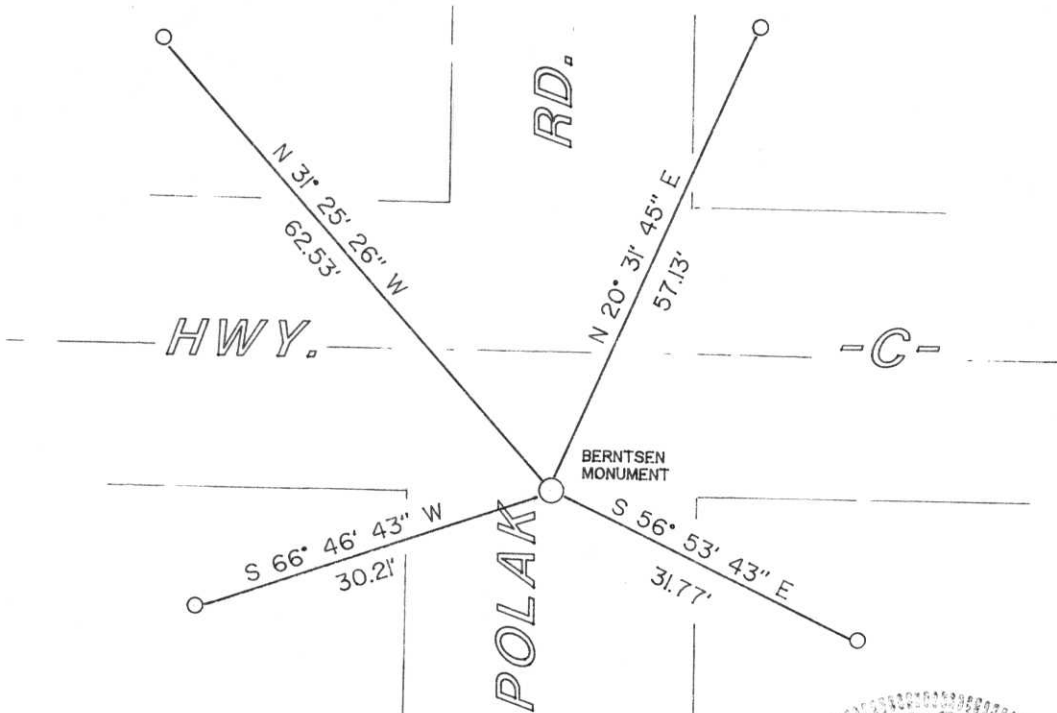
(b) (f) (g) (h) Description of monument found at this corner and if it was accepted, state all evidence (material, testimonial, occupational, plats, records, other monuments) used as a basis for accepting. If not accepted or if nothing was found, state evidence used as basis for establishing location. If reestablished through lost corner proportionate methods, indicate all monuments, distances and directions used to establish.

EXCAVATED HIGHWAY AT IT'S INTERSECTION WITH POLAK RD. FOUND NOTHING. A LOCAL RESIDENT, HARVEY HODGSON, OF THE AREA FOR MANY YEARS STATED HE REMEMBERED THE CORNER BEING AT THE SOUTH SIDE OF THE PAVEMENT IN LINE WITH THE CENTER OF POLAK ROAD RUNNING SOUTH. RUNNING BETWEEN THE NORTHWEST AND NORTHEAST CORNERS AT MID DISTANCE PLACES THE CORNER POSITION AT THAT POINT. SET A BERNTSEN MONUMENT.

(c) (d) (e) Plan view of corner with ties to at least 4 witness monuments. If in disagreement with previously established corner, show the distances between the two corners and also indicate the ties to the disputed corner.

WITNESS CAP ○

RECEIVED AT LINCOLN COUNTY
 COURTHOUSE THIS 25 DAY
 OF May 1995
Pat Lindo
 TAX DESCRIPTION OFFICE



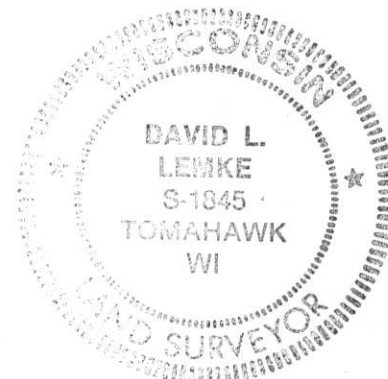
(i) I, DAVID L. LEMKE

(type or print name) certify that the corner location on this record was determined by me or under my direction and control and that this U.S. Public Land Survey Monument Record is correct and complete to the best of my knowledge and belief.

David L. Lemke
 Signature

MAY 22 1995

Date



Index No. Q-7