

U.S. PUBLIC LAND SURVEY MONUMENT RECORD

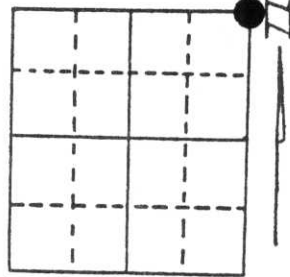
Note: This form is intended and designed to fulfill all requirements of Wisconsin Administrative Code, Chapter A-E 5.02, U.S. Public Land Survey Monument Record (3) (a) (b) (c) (d) (e) (f) (g) (h) (i). An additional sheet may be added if necessary to conform with said requirements.

(a) Corner location: Township 32 North

Range 8 East

Town/City/Village TOWN OF SCHLEY

County LINCOLN

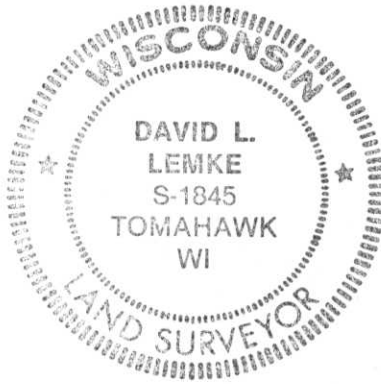
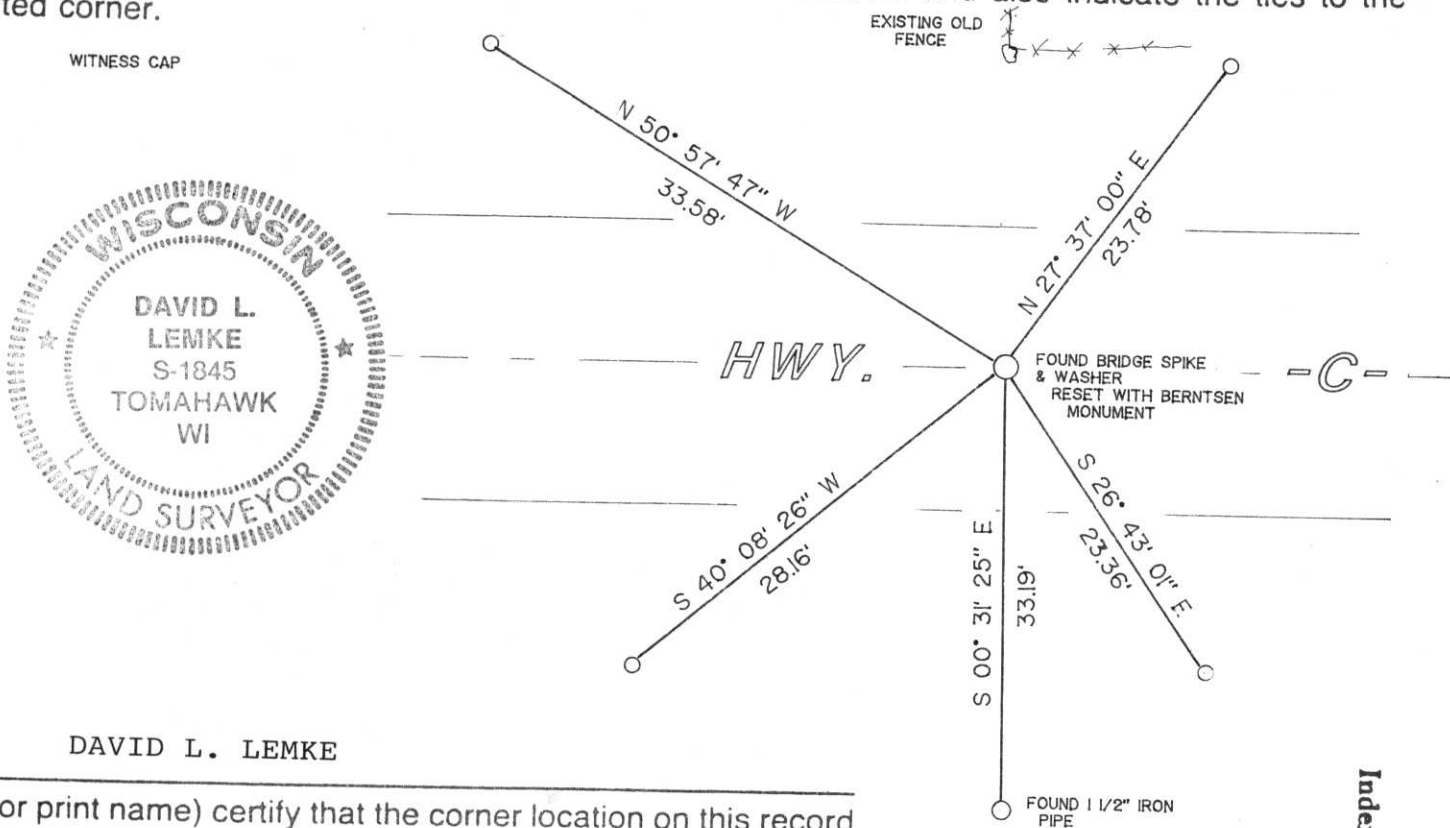


Section 30

(b) (f) (g) (h) Description of monument found at this corner and if it was accepted, state all evidence (material, testimonial, occupational, plats, records, other monuments) used as a basis for accepting. If not accepted or if nothing was found, state evidence used as basis for establishing location. If reestablished through lost corner proportionate methods, indicate all monuments, distances and directions used to establish.

FOUND A BRIDGE SPIKE AND WASHER IN THE CENTER OF THE HIGHWAY. ALSO FOUND AN IRON PIPE ABOUT 33' TO THE SOUTH. AN EXISTING OLD FENCE RUNS TO THE NORTH. EXCAVATED THE HIGHWAY AND FOUND NOTHING. THE CORNER POSITION FALLS IN A FILL AREA FOR THE HIGHWAY MAKING FURTHER DIGGING IMPRACTICAL. SET A BERNTSEN MONUMENT AT FOUND SPIKE POSITION.

(c) (d) (e) Plan view of corner with ties to at least 4 witness monuments. If in disagreement with previously established corner, show the distances between the two corners and also indicate the ties to the disputed corner.



DAVID L. LEMKE

(i) I, DAVID L. LEMKE
 (type or print name) certify that the corner location on this record was determined by me or under my direction and control and that this U.S. Public Land Survey Monument Record is correct and complete to the best of my knowledge and belief.

[Signature]
 Signature

MAY 22 1995
 Date

RECEIVED AT LINCOLN COUNTY COURTHOUSE THIS 25 DAY OF May 1995.
[Signature]
 TAX DESCRIPTION OFFICE

Index No. 5