

U.S. PUBLIC LAND SURVEY MONUMENT RECORD

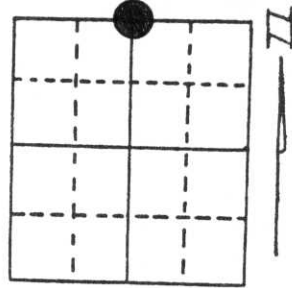
Note: This form is intended and designed to fulfill all requirements of Wisconsin Administrative Code, Chapter A-E 5.02, U.S. Public Land Survey Monument Record (3) (a) (b) (c) (d) (e) (f) (g) (h) (i). An additional sheet may be added if necessary to conform with said requirements.

(a) Corner location: Township 32 North

Range 8 East

Town/Village Schley

County Lincoln

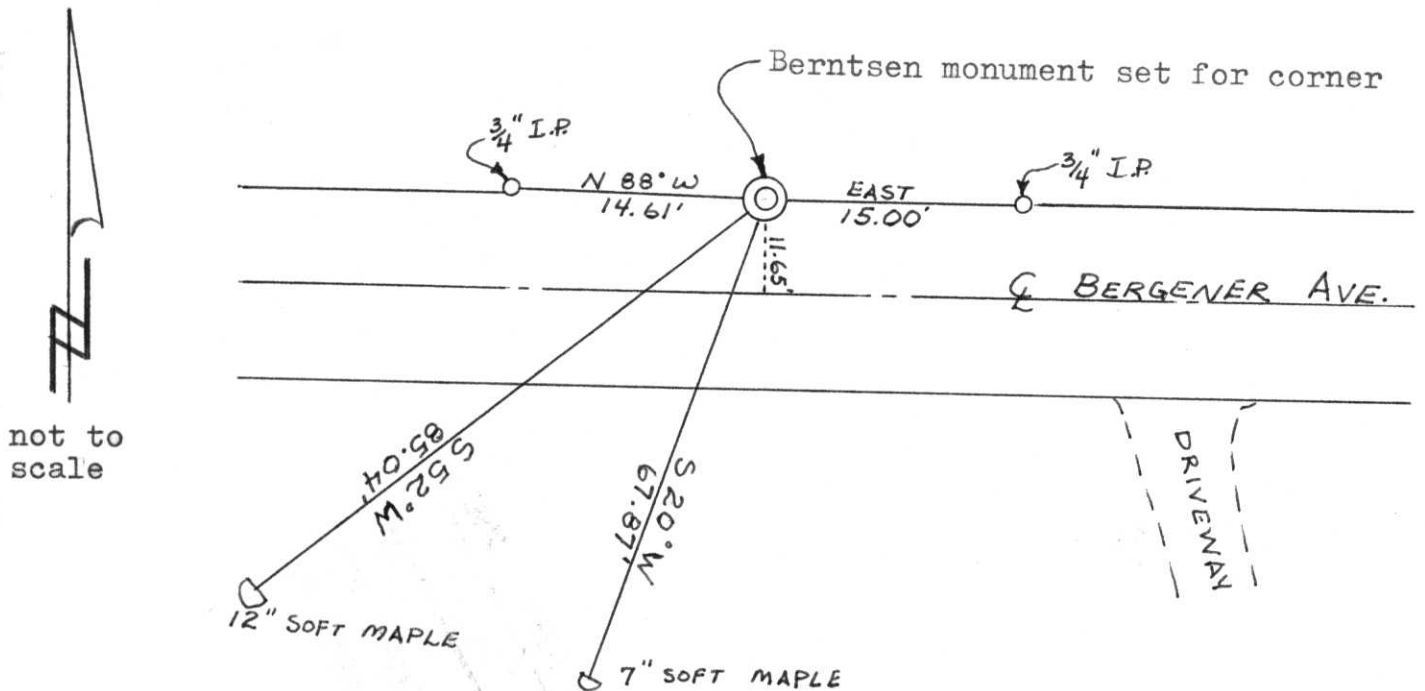


Section 19

(b) (f) (g) (h) Description of monument found at this corner and if it was accepted, state all evidence (material, testimonial, occupational, plats, records, other monuments) used as a basis for accepting. If not accepted or if nothing was found, state evidence used as basis for establishing location. If reestablished through lost corner proportionate methods, indicate all monuments, distances and directions used to establish.

Original Gov't. Survey: March 1852 by A.G. & F.S. Ellis, set wood post for corner with bearings, soft maple 8" S 51° E 8 links & soft maple 18" N 11° W 23 links. I did not find any monument in place for the corner. After speaking with a long time local resident Ernie Burgener, who said a "sink hole" existed where the corner should have been, that he knew of no monument for the corner in or near this "sink hole" at the time it was filled in with rocks as a base for a road, I determined that the corner location was lost. I determined a location for this corner by single proportion measurement between the section corners east and west of this corner as shown below. I set a Berntsen monument for the corner and referenced it as shown below.

(c) (d) (e) Plan view of corner with ties to at least 4 witness monuments. If in disagreement with previously established corner, show the distances between the two corners and also indicate the ties to the disputed corner.



not to scale

(i) I, Lester J. Schmit R.L.S. S-1192

(type or print name) certify that the corner location on this record was determined by me or under my direction and control and that this U.S. Public Land Survey Monument Record is correct and complete to the best of my knowledge and belief.

Lester J. Schmit 15 Oct 91
Signature Date



Index No. M-3