

U.S. PUBLIC LAND SURVEY MONUMENT RECORD

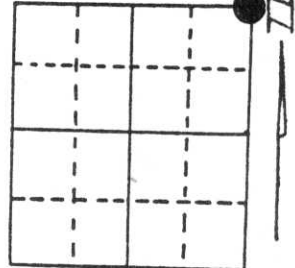
Note: This form is intended and designed to fulfill all requirements of Wisconsin Administrative Code, Chapter A-E 5.02, U.S. Public Land Survey Monument Record (3) (a) (b) (c) (d) (e) (f) (g) (h) (i). An additional sheet may be added if necessary to conform with said requirements.

(a) Corner location: Township 32 North

Range 8 East

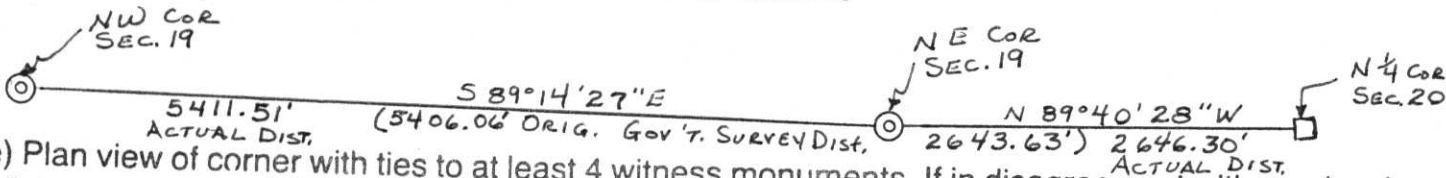
Town/City/Village Schley

County Lincoln

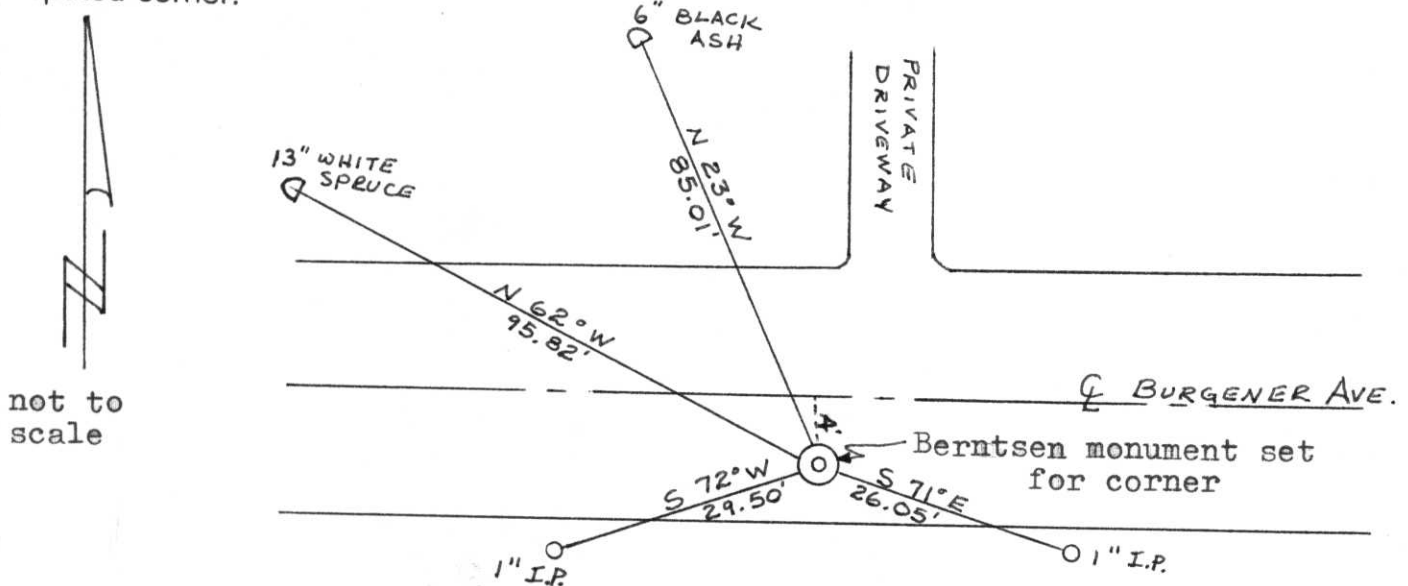


Section 19

(b) (f) (g) (h) Description of monument found at this corner and if it was accepted, state all evidence (material, testimonial, occupational, plats, records, other monuments) used as a basis for accepting. If not accepted or if nothing was found, state evidence used as basis for establishing location. If reestablished through lost corner proportionate methods, indicate all monuments, distances and directions used to establish. Original Gov't. Survey: March 1852 by A.G. & F.S. Ellis, set wood post for corner with bearings, fir 10" S 29° E 98 links & fir 10" N 33° E 70 links. In talking with a very long time resident, Ernie Burgener, who said as a young man he had seen a red granite 4' south of the centre-line of a road that was being constructed through the swamp and creek bottoms. Wagon loads of rock were hauled in and placed on the outside of the road to keep the mahor run offs from washing out the road. In using a backhoe to locate the corner, we did not find the granite, so I considered it a lost corner. To reestablish the corner location, I single proportioned the distance between the Northwest corner of Section 19 to the North 1/4 corner of Section 20 for the east & west alignment, with a point 4' south of the centre-line of Burgener Avenue as shown below. Set a Berntsen monument for the corner and referenced it as shown below.



(c) (d) (e) Plan view of corner with ties to at least 4 witness monuments. If in disagreement with previously established corner, show the distances between the two corners and also indicate the ties to the disputed corner.



(i) I, Lester J. Schmit R.L.S. S-1192
 (type or print name) certify that the corner location on this record was determined by me or under my direction and control and that this U.S. Public Land Survey Monument Record is correct and complete to the best of my knowledge and belief.

Lester J. Schmit 15 Oct 91
 Signature Date



Index No. M-5