

U.S. PUBLIC LAND SURVEY MONUMENT RECORD

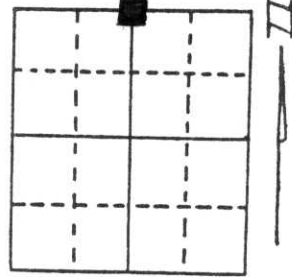
Note: This form is intended and designed to fulfill all requirements of Wisconsin Administrative Code, Chapter A-E 5.02, U.S. Public Land Survey Monument Record (3) (a) (b) (c) (d) (e) (f) (g) (h) (i). An additional sheet may be added if necessary to conform with said requirements.

(a) Corner location: Township 32 North

Range 8 East

Town/City/Village Schley

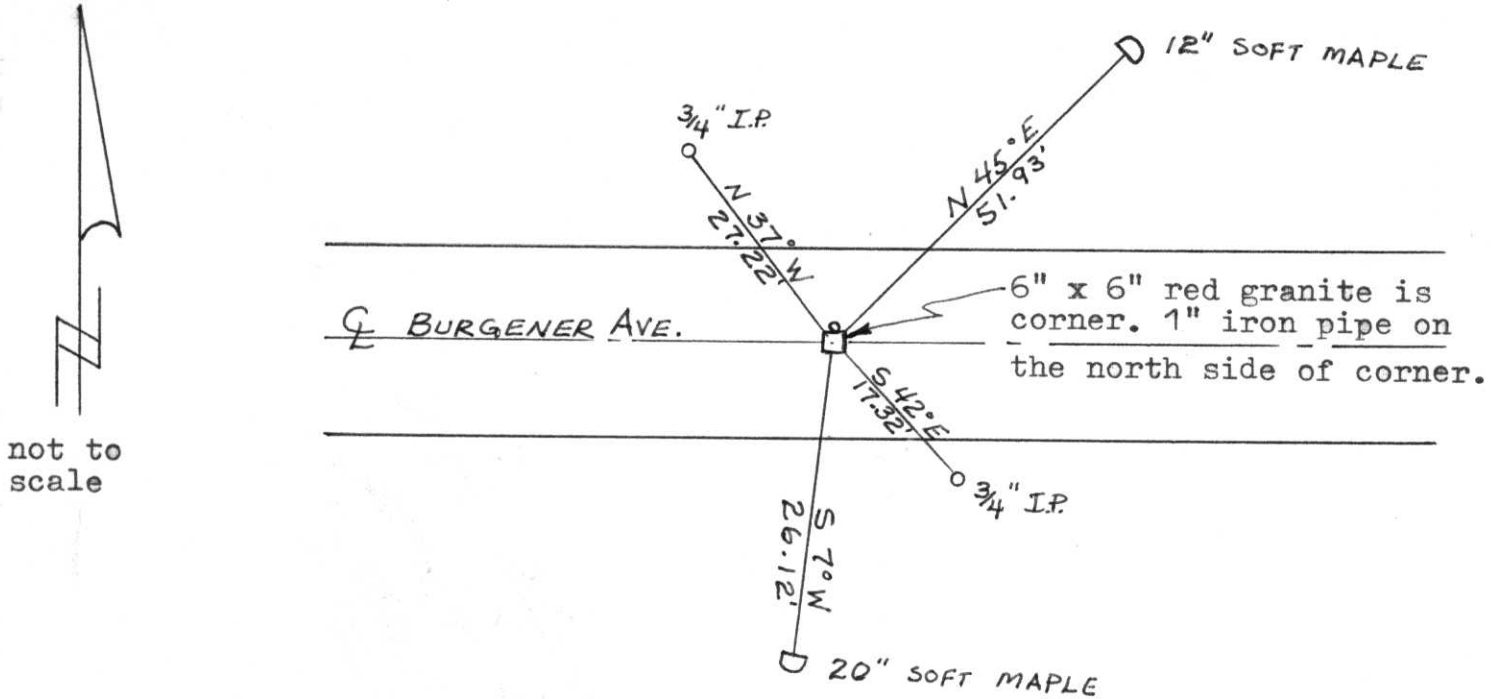
County Lincoln



Section 20

(b) (f) (g) (h) Description of monument found at this corner and if it was accepted, state all evidence (material, testimonial, occupational, plats, records, other monuments) used as a basis for accepting. If not accepted or if nothing was found, state evidence used as basis for establishing location. If reestablished through lost corner proportionate methods, indicate all monuments, distances and directions used to establish. Original Gov't. Survey: March 1852 by A.G. & F.S. Ellis, set wood post for corner with bearings, birch 18" N 65° W 8 links & hemlock 11" S 14° W 13 links. Digging with a backhoe, found a 6" x 6" red granite monument in the centre-line of Burgener Avenue for the corner. I set a 1" iron pipe on the north side of the granite for location purposes. Referenced the corner as shown below.

(c) (d) (e) Plan view of corner with ties to at least 4 witness monuments. If in disagreement with previously established corner, show the distances between the two corners and also indicate the ties to the disputed corner.



not to scale

(i) I, Lester J. Schmit R.L.S. S-1192

(type or print name) certify that the corner location on this record was determined by me or under my direction and control and that this U.S. Public Land Survey Monument Record is correct and complete to the best of my knowledge and belief.

Lester J. Schmit

Signature

15 Oct 91

Date



Index No. M-7