

CERTIFIED LAND CORNER RESTORATION

Index No. M-13

State of Wisconsin }  
County of Lincoln } ss.

History of original corner establishment:

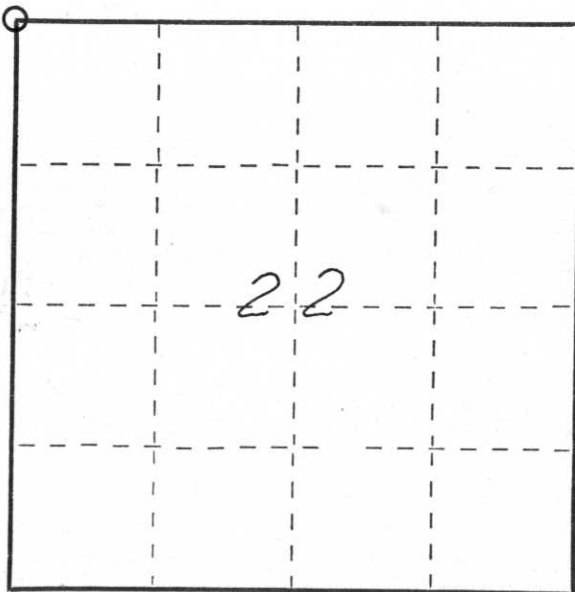
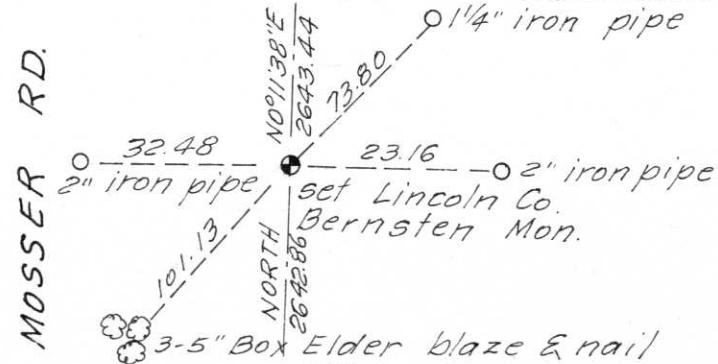
Wood post by original Government Survey

I Edwin R. Abendroth, do hereby certify that on the 9th day of May, 1985, I found evidence of the NW Northwest corner of Section 22 Township 32, North, Range 8 East, Fourth, Principal Meridian, as described hereon; and that from this evidence I established a new monument and accessories as described hereon to perpetuate the original location of this corner.

Resident witnesses:

Pat Ryan  
\_\_\_\_\_  
\_\_\_\_\_

Description of monument and accessories I established to perpetuate the original location of this corner.



○ = Corner monument restored.

Dated at Wausau, Wis., this 13th day of May, 1985

Signature Edwin R. Abendroth Title surveyor Registration No. S-798  
(County Surveyor, Registered Land Surveyor, or other duly authorized official)

Office of Register of Deeds, County of \_\_\_\_\_, I hereby certify that the within instrument was filed in this office for record on the \_\_\_\_\_ day of \_\_\_\_\_, 19\_\_\_\_ at \_\_\_\_\_ o'clock \_\_\_\_\_ M.

\_\_\_\_\_  
(Register of Deeds)  
By \_\_\_\_\_ Deputy