

U.S. PUBLIC LAND SURVEY MONUMENT RECORD

NOTE: THIS FORM IS INTENDED AND DESIGNED TO FULFILL ALL REQUIREMENTS OF WISCONSIN ADMINISTRATIVE CODE, CHAPTER A-E 7.08 U.S. PUBLIC LAND SURVEY MONUMENT RECORD (3) (a) (b) (c) (d) (e) (f) (g) (h) (i). AN ADDITIONAL SHEET MAY BE ADDED IF NECESSARY TO CONFORM WITH SAID REQUIREMENTS.

(a) CORNER LOCATION: TOWNSHIP 32 NORTH
 RANGE 8 EAST/WEST
 TOWN/~~CITY/VILLAGE~~ SCHLEY
 COUNTY LINCOLN



SECTION 22

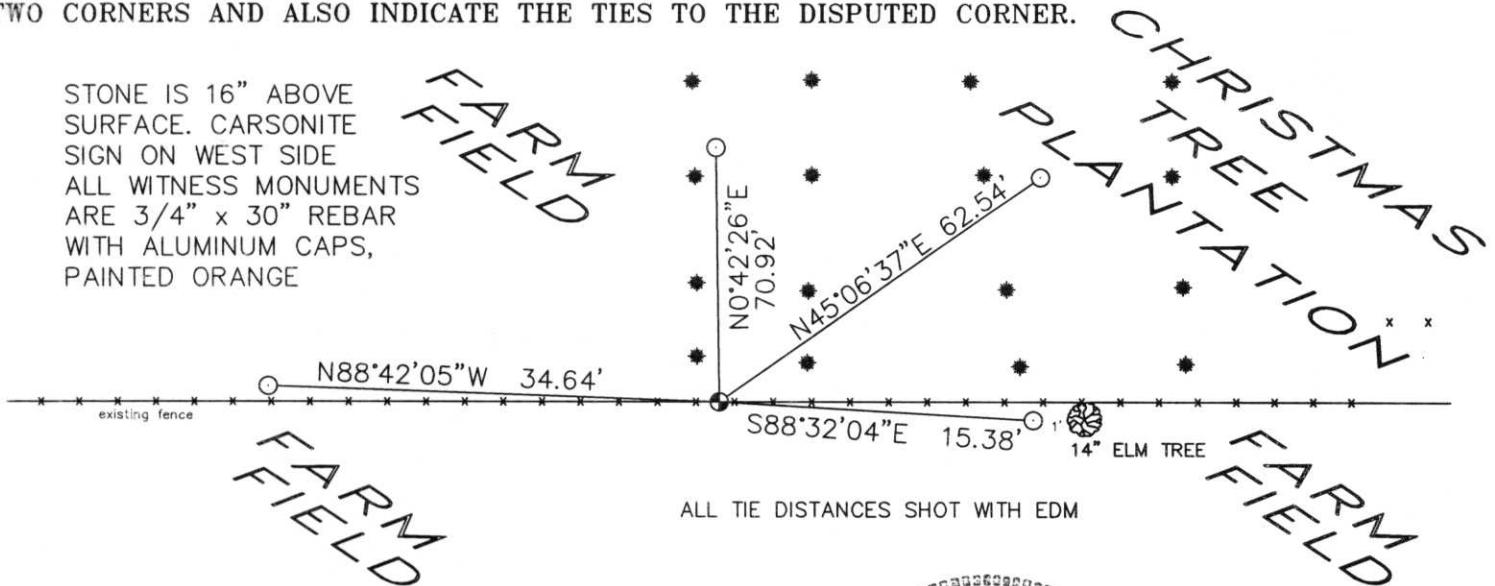
(b) (f) (g) (h) DESCRIPTION OF MONUMENT FOUND AT THIS CORNER AND IF IT WAS ACCEPTED, STATE ALL EVIDENCE (MATERIAL, TESTIMONIAL, OCCUPATIONAL, PLATS, RECORDS, OTHER MONUMENTS) USED AS BASIS FOR ACCEPTING. IF NOT ACCEPTED OR IF NOTHING WAS FOUND, STATE EVIDENCE USED AS BASIS FOR ESTABLISHING LOCATION. IF REESTABLISHED THROUGH LOST CORNER PROPORTIONATE METHODS, INDICATE ALL MONUMENTS, DISTANCES AND DIRECTIONS USED TO ESTABLISH. INDICATE TYPE OF MONUMENT FOUND OR SET AND SIGN POST.

DROVE TO AREA OF CORNER, MET DON BLOECHL, LANDOWNER. HE SAID HE HAD SEEN A STONE MONUMENT AT THIS LOCATION SEVERAL YEARS BEFORE, WHEN MAKING FENCE. WE WALKED FENCE LINE, AND FOUND 6" x 6" x 4' GRANITE STONE, WITH LINE CARVED ON TOP, LAYING DOWN. DUG HOLE AT BOTTOM OF STONE, RESET. PUT OUT TIES. FOUND NO OTHER EVIDENCE TO REFUTE THIS LOCATION. SECTION SUMMARY LOOKED VERY GOOD. SEE BACK FOR SECTION SUMMARY.

**RECEIVED AT LINCOLN COUNTY
 COURTHOUSE THIS 28th DAY
 OF Oct 19 99
Pat Priole
 LAND INFORMATION OFFICE**

(c) (d) (e) PLAN VIEW OF CORNER WITH TIES TO AT LEAST 4 WITNESS MONUMENTS. IF IN DISAGREEMENT WITH PREVIOUSLY ESTABLISHED CORNER, SHOW THE DISTANCES BETWEEN THE TWO CORNERS AND ALSO INDICATE THE TIES TO THE DISPUTED CORNER.

STONE IS 16" ABOVE SURFACE. CARSONITE SIGN ON WEST SIDE ALL WITNESS MONUMENTS ARE 3/4" x 30" REBAR WITH ALUMINUM CAPS, PAINTED ORANGE



ALL TIE DISTANCES SHOT WITH EDM

(i) I, DAVID L. OSTERBRINK RLS
 (TYPE OR PRINT NAME) CERTIFY THAT THE CORNER LOCATION ON THIS RECORD WAS DETERMINED BY ME OR UNDER MY DIRECTION AND CONTROL AND THAT THIS U.S. PUBLIC LAND SURVEY MONUMENT RECORD IS CORRECT AND COMPLETE TO THE BEST OF MY KNOWLEDGE AND BELIEF.

David L. Osterbrink 10-15-99
 SIGNATURE DATE



INDEX NO. M-15

SECTION SUMMARY

SECTION 22, T32 N. R 8 E

TOWN OF SCHLEY

