

CERTIFIED LAND CORNER RESTORATION

Index No. G-25

State of Wisconsin }
County of LANGLADE } ss.

I WILLIAM F. KELLY, do hereby certify that on the 3RD day of DEC, 1981, I found evidence of the W. 1/4 corner of SEC. 7 Township 32, North, Range 9 EAST, Fourth Principal Meridian, as described hereon; and that from this evidence I established a new monument and accessories as described hereon to perpetuate the original location of this corner.

Resident witnesses:

EMIL FOLTA

History of original corner establishment:

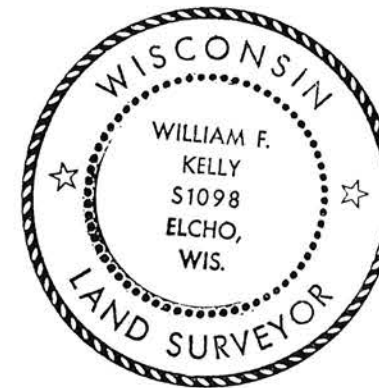
ORIGINAL CORNER ESTABLISHED BY HIRAM C. FELLOWS IN SEPT, 1860.

original corner replaced with granite mon. in the 1930's by Lincoln Co. Surveyor

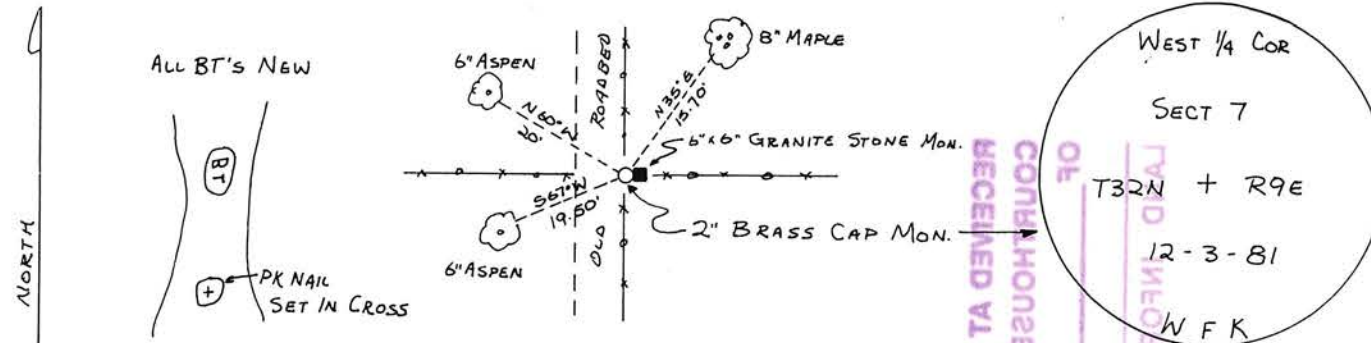
E 1/4 Sec 12-32-8

Description of corner evidence found:

6"x6" GRANITE STONE MON., LYING FLAT FOUND IN PLACE. REPLACED STONE WITH A 2"x 42" BLACK IRON PIPE WITH BRASS CAP MONUMENT AS CORNER. SET STONE ALONGSIDE BRASS CAP. MARKED 3 NEW BT'S.



Description of monument and accessories I established to perpetuate the original location of this corner.



Dated at ELCHO, Wis., this 3RD day of DEC, 1981

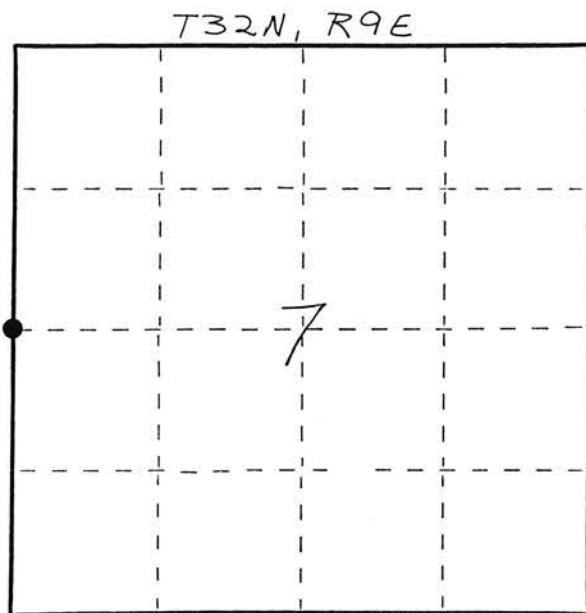
Signature William F. Kelly Title COUNTY SURVEYOR Registration No. 1098
(County Surveyor, Registered Land Surveyor, or other duly authorized official)

Office of Register of Deeds, County of _____, I hereby certify that the within instrument was filed in this office for record on the _____ day of _____, 19____ at _____ o'clock _____ M.

(Register of Deeds)

By _____ Deputy

FORM 985 H. C. MILLER CO., MILWAUKEE



○ = Corner monument restored.