

# U.S. PUBLIC LAND SURVEY MONUMENT RECORD

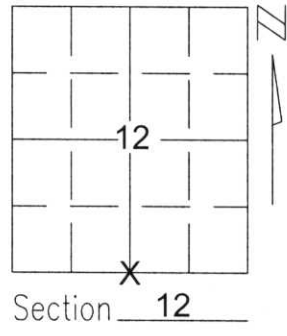
Note: This form is intended and designed to fulfill all requirements of Wisconsin Administrative Code, Chapter A-E 5.02, U.S. Public Land Survey Monument Record (3)(a)(b)(c)(d)(e)(f)(g)(h)(i). An additional sheet may be added if necessary to conform with said requirements.

(a) Corner location: Township 32 North

Range 8 East

Town/City/Village SCHLEY

County LINCOLN



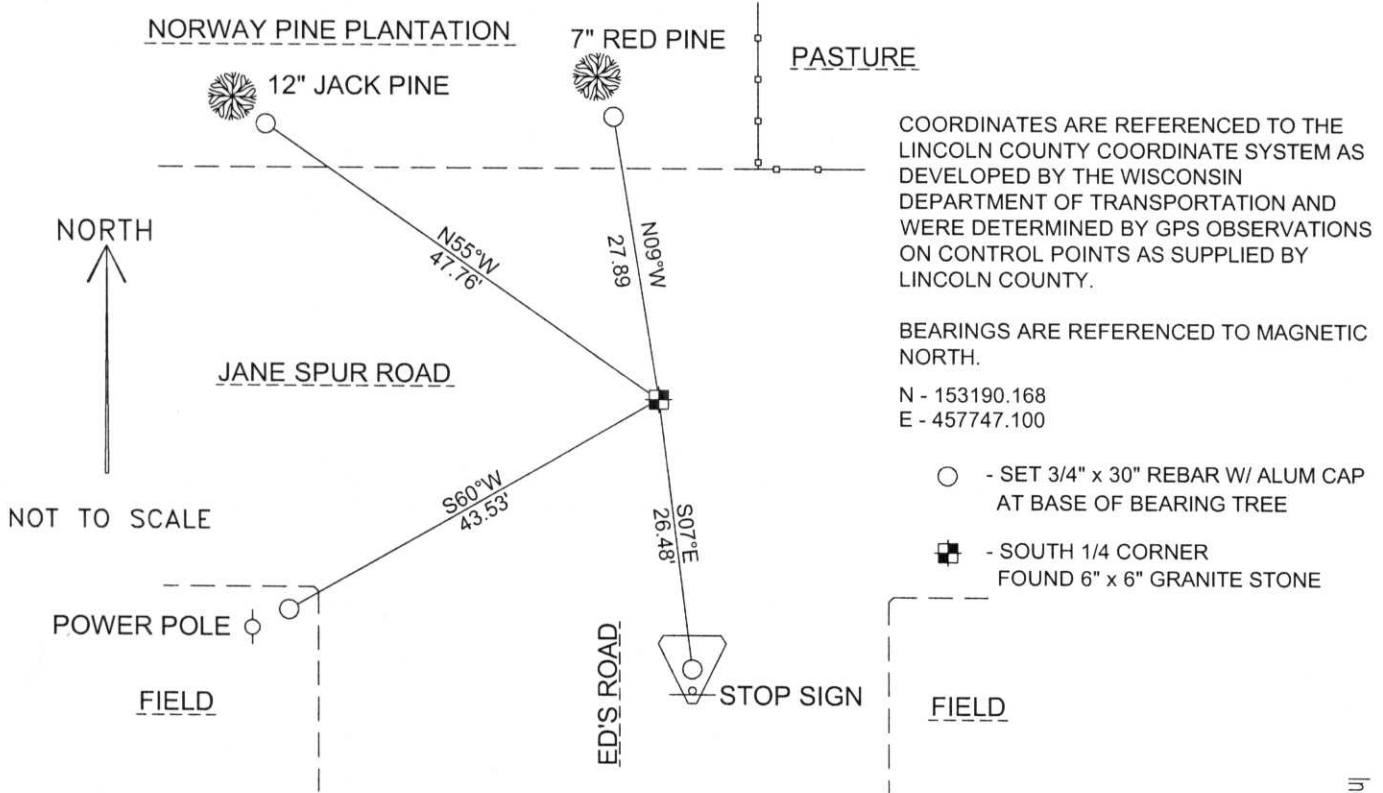
Section 12

(b)(f)(g)(h) Description of monument found at this corner and if it was accepted, state all evidence (material, testimonial, occupational, plats, records, other monuments) used as a basis for accepting. If not accepted or if nothing was found, state evidence used as basis for establishing location. If reestablished through lost corner proportionate methods, indicate all monuments, distances and directions used to establish.

DUG FOR CORNER AT CENTERLINE. FOUND STONE WITH 3/4" BAR ON EAST SIDE, 1.5' BELOW SURFACE. THE CORNER CHECKED WITH PREVIOUS SURVEY'S IN THE AREA. ACCEPTED STONE AS CORNER AND TIED OUT TO PERPETUATE CORNER LOCATION.

RECEIVED BY LINCOLN COUNTY SURVEYOR THIS 20<sup>TH</sup> DAY OF August 20 04  
*Tony Deth*  
 COUNTY SURVEYOR

(c)(d)(e) Plan view of corner with ties to at least 4 witness monuments. If in disagreement with previously established corner, show the distances between the two corners and also indicate the ties to the disputed corner.



COORDINATES ARE REFERENCED TO THE LINCOLN COUNTY COORDINATE SYSTEM AS DEVELOPED BY THE WISCONSIN DEPARTMENT OF TRANSPORTATION AND WERE DETERMINED BY GPS OBSERVATIONS ON CONTROL POINTS AS SUPPLIED BY LINCOLN COUNTY.

BEARINGS ARE REFERENCED TO MAGNETIC NORTH.

N - 153190.168  
 E - 457747.100


- - SET 3/4" x 30" REBAR W/ ALUM CAP AT BASE OF BEARING TREE
- - SOUTH 1/4 CORNER FOUND 6" x 6" GRANITE STONE

(i) I, David A. Renaud, RLS S-2142 certify that the corner location on this record was determined by me or under my direction and control and that this U.S. Public Land Survey Monument Record is correct and complete to the best of my knowledge and belief.

*David Renaud* 6-29-04  
 Signature Date



Index No. 123287

A photograph showing a close-up of a dirt surface, possibly a trench or excavation. A dark shadow of a person is cast across the dirt from the right side. A small white label is placed on the dirt, containing handwritten text. The dirt is light brown and appears to have some small stones or debris.

123287  
54 0-32-8