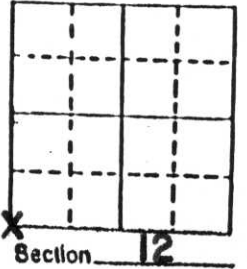


# U.S. PUBLIC LAND SURVEY MONUMENT RECORD

Note: This form is intended and designed to fulfill all requirements of Wisconsin Administrative Code, Chapter A-E 5.02, U.S. Public Land Survey Monument Record (3) (a) (b) (c) (d) (e) (f) (g) (h) (i). An additional sheet may be added if necessary to conform with said requirements.

(a) Corner location: Township 32 North  
 Range 8 East

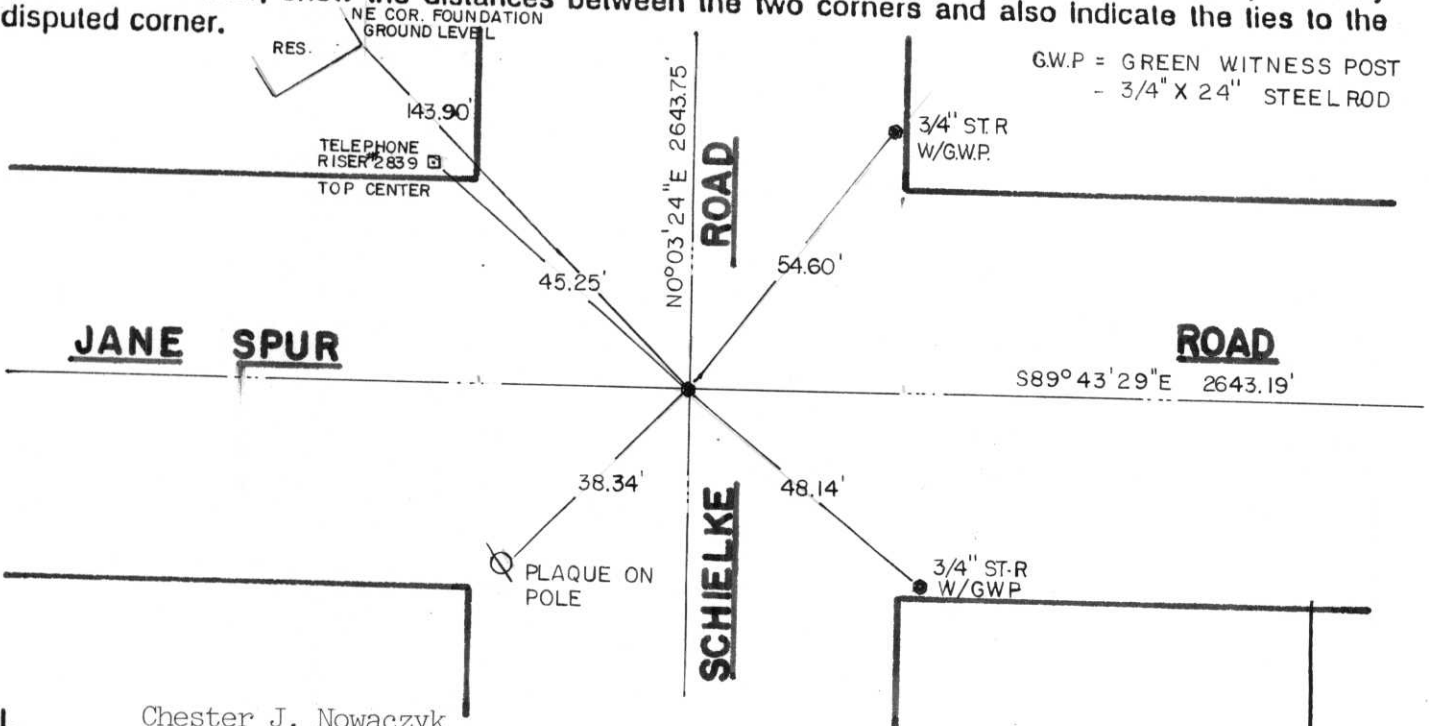


Town SCHLEY  
 County LINCOLN

b) (f) (g) (h) Description of monument found at this corner and if it was accepted, state all evidence (material, testimonial, occupational, plats, records, other monuments) used as a basis for accepting. If not accepted or if nothing was found, state evidence used as basis for establishing location. If reestablished through lost corner proportionate methods, indicate all monuments, distances and directions used to establish.

Dug for corner with backhoe; did not find any evidence of corner. Town Chairman indicated that Town road right-of-way was centered on Section Line. Located split of right-of-way from fences at approximate NW, W $\frac{1}{4}$ , and SW corners as well as approximate forty corners. Connected this to existing N $\frac{1}{4}$ , E $\frac{1}{4}$ , and S $\frac{1}{4}$  corners by traverse and determined corner location. Set 3/4" x 24" Steel Bars and witnessed out.

c) (d) (e) Plan view of corner with ties to at least 4 witness monuments. If in disagreement with previously established corner, show the distances between the two corners and also indicate the ties to the disputed corner.



(i) I, Chester J. Nowaczyk  
 (Type or print name) certify that the corner location on this record was determined by me or under my direction and control and that this U.S. Public Land Survey Monument Record is correct and complete to the best of my knowledge and belief.

Chester J. Nowaczyk  
 Signature \_\_\_\_\_ Date \_\_\_\_\_



Index No. I-21