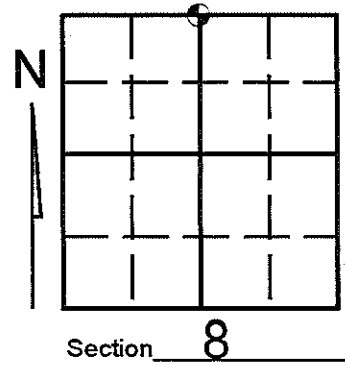


U.S. PUBLIC LAND SURVEY MONUMENT RECORD

Note: This form is intended and designed to fulfill all requirements of Wisconsin Administrative Code, Chapter A-E 7.08 U.S. Public Land Survey Monument Record (3)(a)(b)(c)(d)(e)(f)(g)(h)(i). An additional sheet may be added if necessary to conform with said requirements.

(a) Corner location: Township 32 North
Range 08 East/West

Town/City/Village SCHLEY
County LINCOLN



(b) (f) (g) (h) Description of monument found at this corner and if it was accepted, state all evidence (material, testimonial, occupational, plats, records, other monuments) used as a basis for accepting. If not accepted or if nothing was found, state evidence used as basis for establishing location. If reestablished through lost corner proportionate methods, indicate all monuments, distances and directions used to establish. Indicate type of monument found or set and sign post.

-1852- Ellis, government surveyor set wood post and made the following B.T.'S: Hemlock 18" N24°W, 17 Links, Hemlock 16" , S72°E, 17 Links.

-1994- Lester Schmit replaced an 3/4" iron pin with a Bernsten monument and made witnesses . (SEE CORNER FORM E-7)

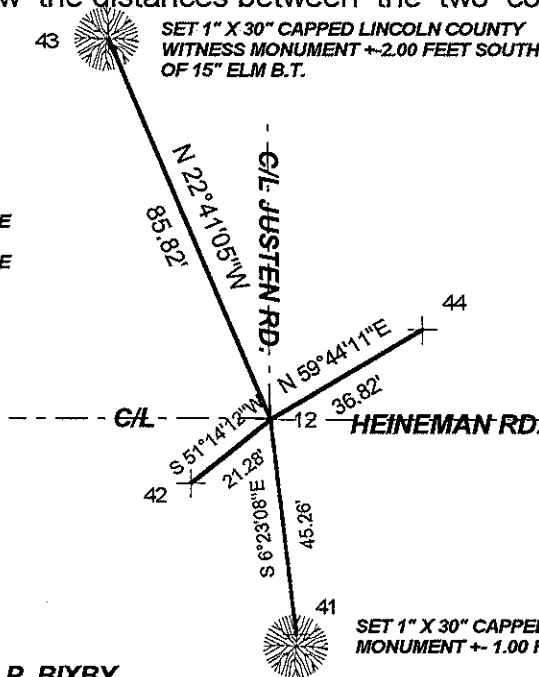
-2009- Kevin Bixby found a Bernsten survey nail and four witnesses per form E-7 and witnessed as shown below.

(c) (d) (e) Plan view of corner with ties to at least 4 witness monuments. If in disagreement with previously established corner, show the distances between the two corners and also indicate the ties to the disputed corner.

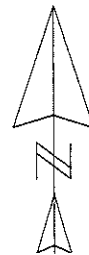
SCALE: 1" = 40'

LEGEND

- 44- EXISTING 3/4" IRON PIPE
- 42- EXISTING 3/4" IRON PIPE



ANGLES AND DISTANCES MEASURED WITH TOTAL STATION. BEARINGS AND COORDINATES ARE BASED ON LINCOLN COUNTY GRID.

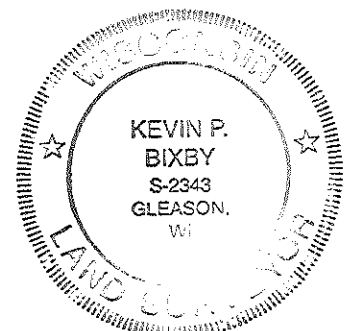


RECEIVED BY LINCOLN COUNTY SURVEYOR THIS 3RD DAY OF December 20 09
Tom Dahn
COUNTY SURVEYOR

(i) I, KEVIN P. BIXBY

(type or print name) certify that the corner location on this record was determined by me or under my direction and control and that this U.S. Public Land Survey Monument Record is correct and complete to the best of my knowledge and belief.

Kevin P. Bixby Signature 12/20/09 Date



Stamp

Index No. E-7

U.S. PUBLIC LAND SURVEY MONUMENT RECORD

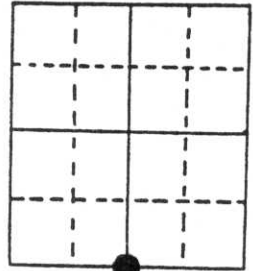
Note: This form is intended and designed to fulfill all requirements of Wisconsin Administrative Code, Chapter A-E 5.02, U.S. Public Land Survey Monument Record (3) (a) (b) (c) (d) (e) (f) (g) (h) (i). An additional sheet may be added if necessary to conform with said requirements.

(a) Corner location: Township 32 North

Range 8 East

Town/City/Village Schley

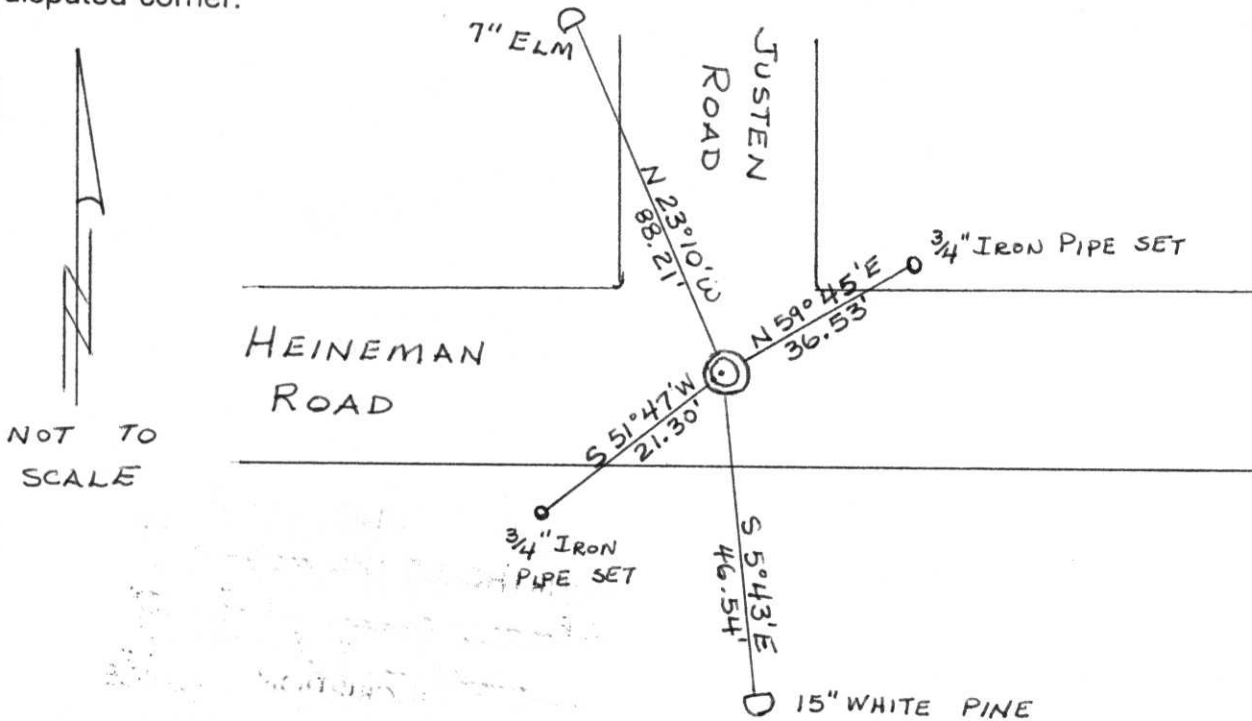
County Lincoln



Section 5

(b) (f) (g) (h) Description of monument found at this corner and if it was accepted, state all evidence (material, testimonial, occupational, plats, records, other monuments) used as a basis for accepting. If not accepted or if nothing was found, state evidence used as basis for establishing location. If reestablished through lost corner proportionate methods, indicate all monuments, distances and directions used to establish. Original Gov't. Survey: April 1852 by A.G. & F.S. Ellis, set wood post for corner with bearings, hemlock 18 N 24° W 17 links & hemlock 16 S 72° E 17 links. Found a 3/4" round iron pin with a 1 1/2" square top, 18" long, at the intersection of the centre-line of Heineman Road from the east & west and the centre-line of Justen Road from the north. Replaced the iron pin with a Berntsen monument, the top of this monument being 4" below the surface. Made references as shown below.

(c) (d) (e) Plan view of corner with ties to at least 4 witness monuments. If in disagreement with previously established corner, show the distances between the two corners and also indicate the ties to the disputed corner.



(i) I, Lester J. Schmit R.L.S. S-1192

(type or print name) certify that the corner location on this record was determined by me or under my direction and control and that this U.S. Public Land Survey Monument Record is correct and complete to the best of my knowledge and belief.

Lester J. Schmit
Signature

6 Oct 94
Date



Index No. E-7



2002 7 3



2002 7 3



2002 7 3



2002 7 3