

# U.S. PUBLIC LAND SURVEY MONUMENT RECORD

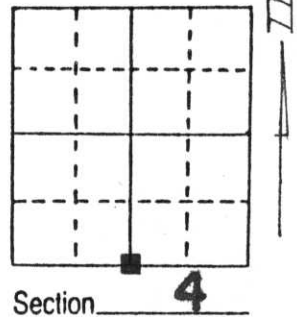
Note: This form is intended and designed to fulfill all requirements of Wisconsin Administrative Code, Chapter A-E 5.02, U.S. Public Land Survey Monument Record (3) (a) (b) (c) (d) (e) (f) (g) (h) (i). An additional sheet may be added if necessary to conform with said requirements.

(a) Corner location: Township 32 North

Range 8 East

Town/City/Village SCHLEY

County LINCOLN

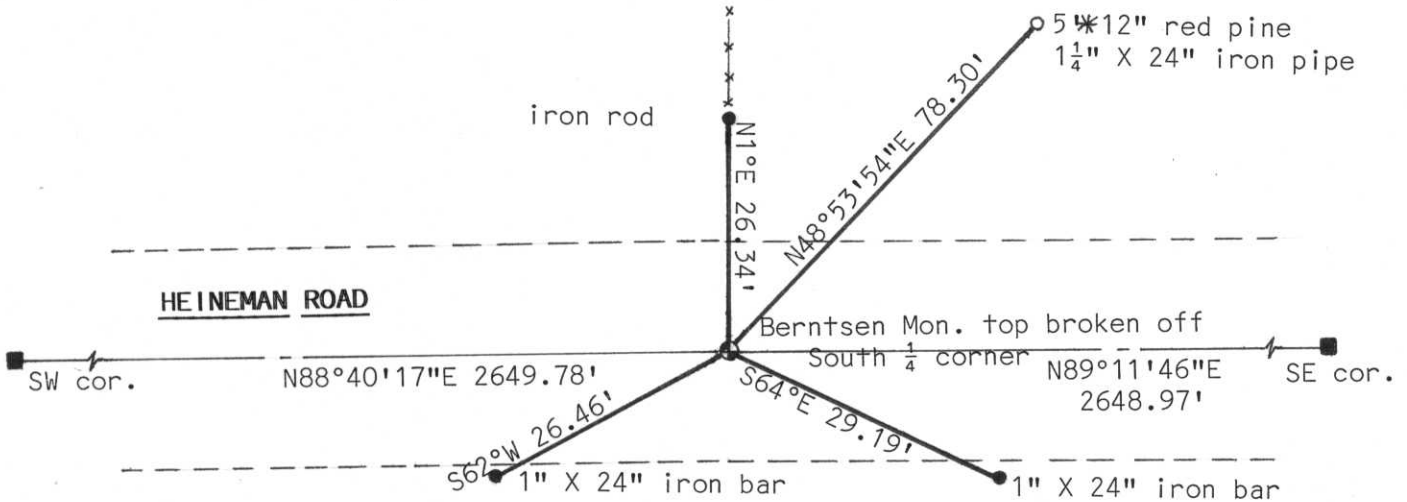


(b) (f) (g) (h) Description of monument found at this corner and if it was accepted, state all evidence (material, testimonial, occupational, plats, records, other monuments) used as a basis for accepting. If not accepted or if nothing was found, state evidence used as basis for establishing location. If reestablished through lost corner proportionate methods, indicate all monuments, distances and directions used to establish.

Found 1" X 24" iron bars at road edge have been disturbed when hit by road grader. Iron bars were laying flat and bent. Reset the two iron bars (SE SW) of corner. Set new distances on the corners. Also set 1 1/4" iron pipe 5 ft. SW of 12" redpine. Dug up broken Berntsen Monument (top broken off) there was enough of monument magnets to cause a good response from locator.

RECEIVED AT LINCOLN COUNTY  
COURTHOUSE THIS 1st DAY  
OF Oct 19 97  
*Pat Mische*  
TAX DESCRIPTION OFFICE

(c) (d) (e) Plan view of corner with ties to at least 4 witness monuments. If in disagreement with previously established corner, show the distances between the two corners and also indicate the ties to the disputed corner.



(i) I, Edwin R. Abendroth  
(type or print name) certify that the corner location on this record was determined by me or under my direction and control and that this U.S. Public Land Survey Monument Record is correct and complete to the best of my knowledge and belief.

*Edwin R. Abendroth*

Signature

Date September 31, 1997



Index No. E-11

CERTIFIED LAND CORNER RESTORATION

Index No. E-11

State of Wisconsin }  
County of Lincoln } ss.

History of original corner establishment:  
Original wood post set by government surveyor

I Sheridan D. Schwark, do hereby certify that on the 17th day of August, 19 82, I found evidence of the South one-quarter corner of Section 4 Township 32 North, Range 8 East, Fourth, Principal Meridian, as described hereon; and that from this evidence I established a new monument and accessories as described hereon to perpetuate the original location of this corner.

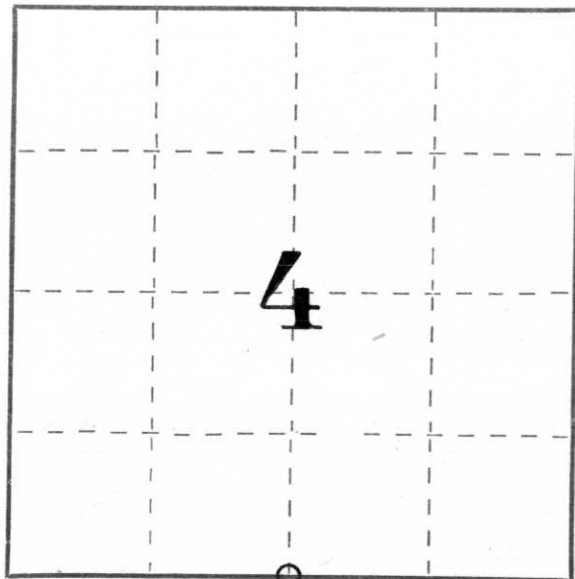
Resident witnesses:

.....  
.....  
.....

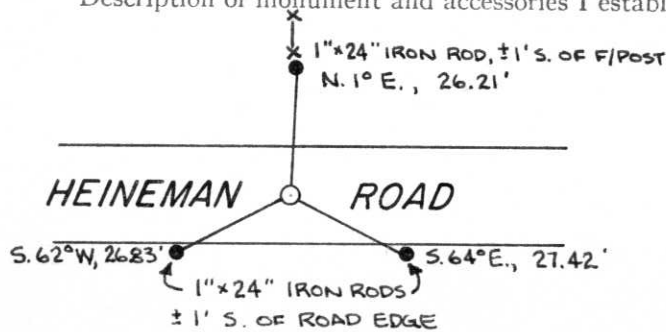
Description of corner evidence found:

We excavated the granite road at the intersection of the centerline and a fence line from the north, Jack Prueser backhoe operator, and found a 6" x 6" red granite monument. The top foot was broken off and the lower portion was tipped to the northeast. We replaced the granite with a Lincoln County Berntsen monument and established the references shown below.

Description of monument and accessories I established to perpetuate the original location of this corner.



○ = Corner monument restored.



Dated at Merrill, Wis., this 23rd day of August, 1982.

Signature Sheridan D. Schwark Title Registered Land Surveyor Registration No. S-1205  
(County Surveyor, Registered Land Surveyor, or other duly authorized official)

Office of Register of Deeds, County of \_\_\_\_\_, I hereby certify that the within instrument was filed in this office for record on the \_\_\_\_\_ day of \_\_\_\_\_, 19\_\_\_\_ at \_\_\_\_\_ o'clock \_\_\_\_\_ M.

.....  
(Register of Deeds)

By \_\_\_\_\_ Deputy