

# U.S. PUBLIC LAND SURVEY MONUMENT RECORD

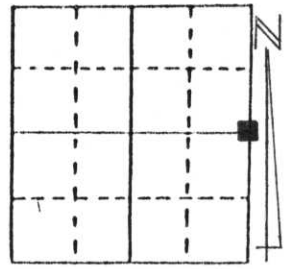
Note: This form is intended and designed to fulfill all requirements of Wisconsin Administrative Code, Chapter A-E 5.02, U.S. Public Land Survey Monument Record (3) (a) (b) (c) (d) (e) (f) (g) (h) (i). An additional sheet may be added if necessary to conform with said requirements.

(a) Corner location: Township 32 North

Range 8 East

Town/City/Village SCHLEY

County LINCOLN

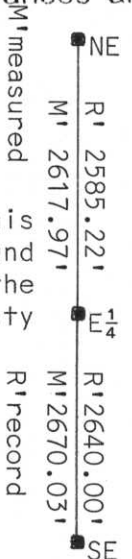


Section 3

(b) (f) (g) (h) Description of monument found at this corner and if it was accepted, state all evidence (material, testimonial, occupational, plats, records, other monuments) used as a basis for accepting. not accepted or if nothing was found, state evidence used as basis for establishing location. reestablished through lost corner proportionate methods, indicate all monuments, distances and directions used to establish.

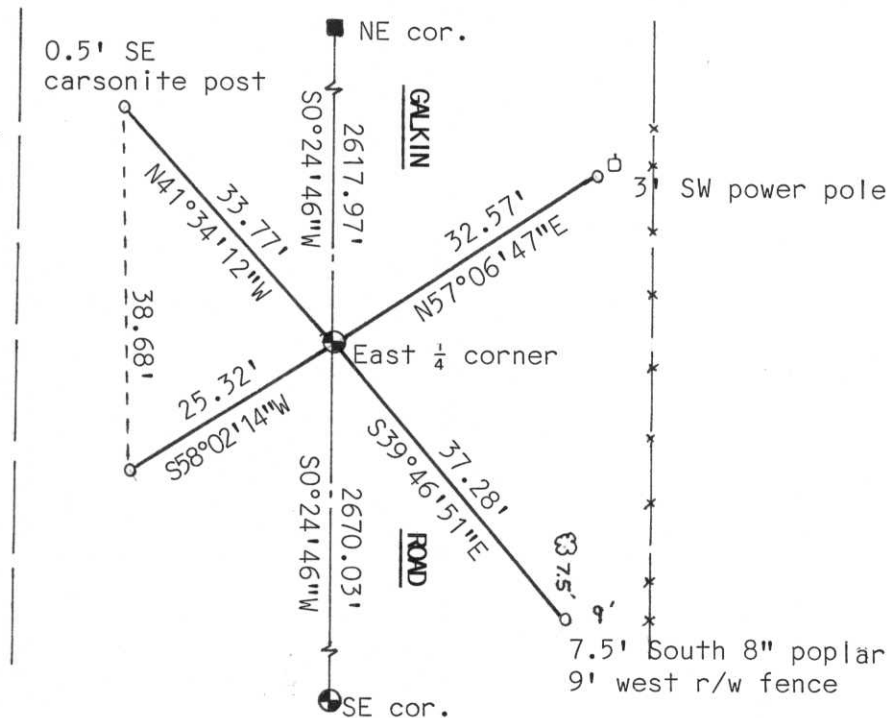
History of original corner: Wood post set by Frederick Ellis in 1852  
 Witnesses: 16" Birch, S15°E, 39 links; 12" Sugar Maple, S53°W, 21 links

We dug at a proportionate distance of 2618' ± from the NE cor, Section 6. This location was a cut area in the road and no occupation lines existed. We found nothing in this area. The centerline at this location fit a straight line from the NE corner to the SE corner. Used single proportionate method to set Lincoln County Berntsen Monument 1' below surface of roadway. Tied out as shown below.



(c) (d) (e) Plan view of corner with ties to at least 4 witness monuments. If in disagreement with previously established corner, show the distances between the two corners and also indicate the ties to the disputed corner.

Note: All ties are to 7/8" x 30" rebar with Lincoln County witness cap.



(i) I, David J. Goslin RLS No. s-2280  
 (type or print name) certify that the corner location on this record was determined by me or under my direction and control and that this U.S. Public Land Survey Monument Record is correct and complete to the best of my knowledge and belief.

David J. Goslin  
 Signature

5-7-99  
 Date



Index No. C-17