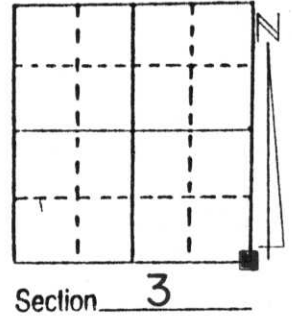


U.S. PUBLIC LAND SURVEY MONUMENT RECORD

Note: This form is intended and designed to fulfill all requirements of Wisconsin Administrative Code, Chapter A-E 5.02, U.S. Public Land Survey Monument Record (3) (a) (b) (c) (d) (e) (f) (g) (h) (i). An additional sheet may be added if necessary to conform with said requirements.

(a) Corner location: Township 32 North
 Range 8 East
 Town/City/Village SCHLEY
 County LINCOLN

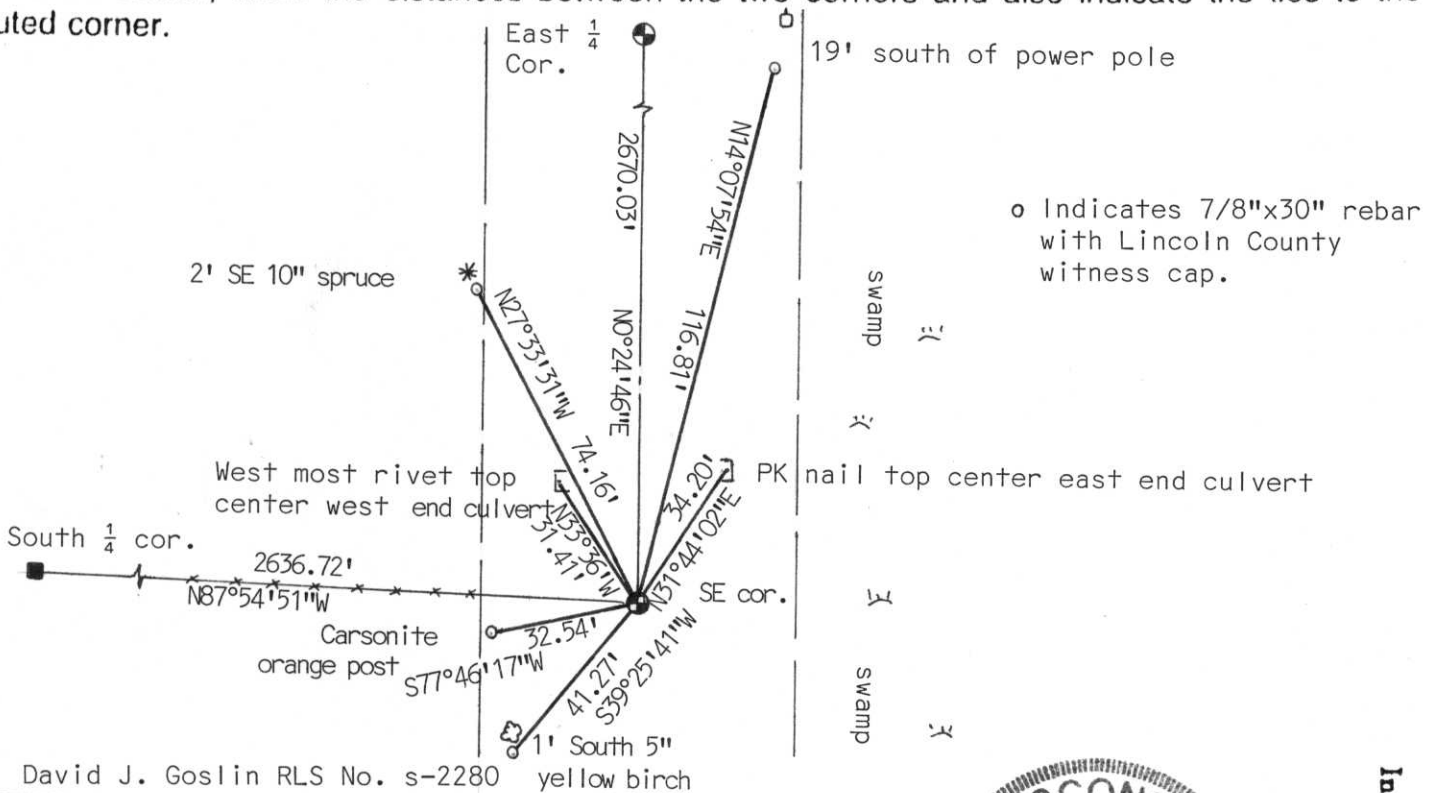


(b) (f) (g) (h) Description of monument found at this corner and if it was accepted, state all evidence (material, testimonial, occupational, plats, records, other monuments) used as a basis for accepting. If not accepted or if nothing was found, state evidence used as basis for establishing location. If reestablished through lost corner proportionate methods, indicate all monuments, distances and directions used to establish.

History of original corner: wood post set by Frederick Ellis in 1852
 Witnesses: 10" Birch, S62°E, 21 links; 9" De, N14°E, 47 links

We dug at the location of an existing fenceline to the west and the centerline of Galkin Road. This was a fill area of the road through a swamp. We dug down 9± feet into natural soil and found nothing. I accepted the centerline of Galkin Road and the existing fenceline extended as the best evidence for the corner location. We set a Berntsen Monument 1' foot below the road surface and tied out as shown below.

(c) (d) (e) Plan view of corner with ties to at least 4 witness monuments. If in disagreement with previously established corner, show the distances between the two corners and also indicate the ties to the disputed corner.



(i) I, David J. Goslin RLS No. s-2280 yellow birch
 (type or print name) certify that the corner location on this record was determined by me or under my direction and control and that this U.S. Public Land Survey Monument Record is correct and complete to the best of my knowledge and belief.

David J. Goslin
 Signature Date 5-7-99



Index No. E-17