

# U.S. PUBLIC LAND SURVEY MONUMENT RECORD

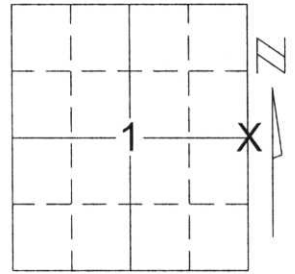
Note: This form is intended and designed to fulfill all requirements of Wisconsin Administrative Code, Chapter A-E 5.02, U.S. Public Land Survey Monument Record (3)(a)(b)(c)(d)(e)(f)(g)(h)(i). An additional sheet may be added if necessary to conform with said requirements.

(a) Corner location: Township 32 North

Range 8 East

Town/City/Village SCHLEY

County LINCOLN



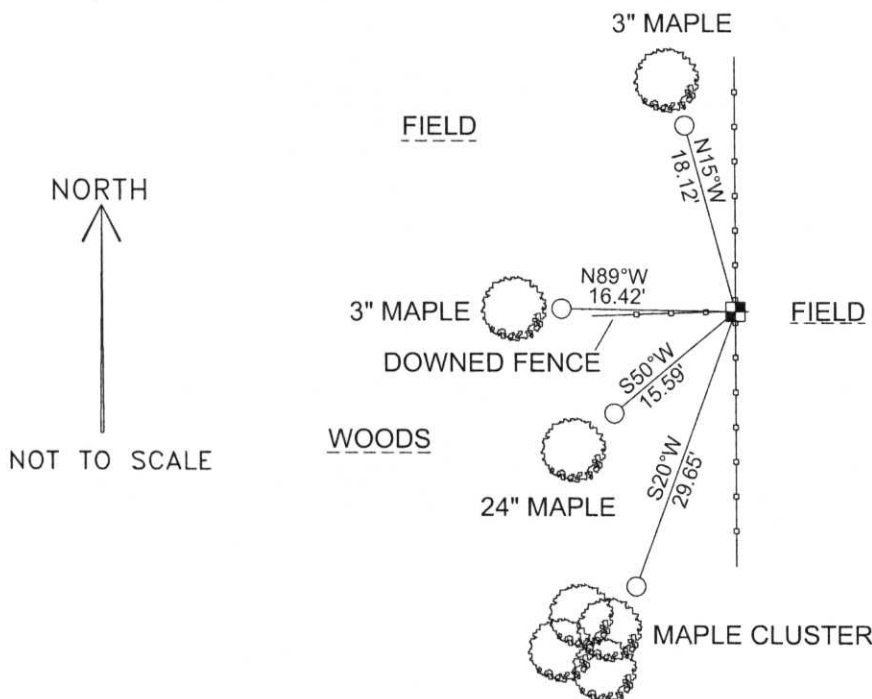
Section 1

(b)(f)(g)(h) Description of monument found at this corner and if it was accepted, state all evidence (material, testimonial, occupational, plats, records, other monuments) used as a basis for accepting. If not accepted or if nothing was found, state evidence used as basis for establishing location. If reestablished through lost corner proportionate methods, indicate all monuments, distances and directions used to establish.

FOUND 2" PIPE WITH BRASS CAP WHICH WAS SET BY WILLIAM F. KELLEY ON 11-19-81. HIS TIES WERE OVERGROWN IN TREES. SET FOUR NEW TIES TO PERPETUATE CORNER LOCATION.

RECEIVED BY LINCOLN COUNTY  
SURVEYOR THIS 20<sup>TH</sup> DAY  
OF August 20 04  
Tony Wall  
COUNTY SURVEYOR

(c)(d)(e) Plan view of corner with ties to at least 4 witness monuments. If in disagreement with previously established corner, show the distances between the two corners and also indicate the ties to the disputed corner.



COORDINATES ARE REFERENCED TO THE LINCOLN COUNTY COORDINATE SYSTEM AS DEVELOPED BY THE WISCONSIN DEPARTMENT OF TRANSPORTATION AND WERE DETERMINED BY GPS OBSERVATIONS ON CONTROL POINTS AS SUPPLIED BY LINCOLN COUNTY.

BEARINGS ARE REFERENCED TO MAGNETIC NORTH.

N - 161120.990  
E - 460428.771

○ - SET 3/4" x 30" REBAR W/ ALUM CAP AT BASE OF BEARING TREE

■ - EAST 1/4 CORNER FOUND 2" PIPE WITH BRASS CAP

(i) I, David A. Renaud, RLS S-2142, certify that the corner location on this record was determined by me or under my direction and control and that this U.S. Public Land Survey Monument Record is correct and complete to the best of my knowledge and belief.

David Renaud 6-29-04  
Signature Date



Index No. ...13285

C-25

CERTIFIED LAND CORNER RESTORATION

Index No. C-25

State of Wisconsin }  
County of LANGLADE } ss.

I WILLIAM F. KELLY, do hereby certify that on the 19<sup>th</sup> day of Nov., 19 81, I found evidence of the W 1/4 corner of SECTION 6 Township 32, North, Range 9 EAST, Fourth Principal Meridian, as described hereon; and that from this evidence I established a new monument and accessories as described hereon to perpetuate the original location of this corner.

Resident witnesses:

H. KAISER

History of original corner establishment:

ORIGINAL CORNER ESTABLISHED BY  
JAMES M. MARSH IN AUG., 1851

ORIGINAL POST REPLACED WITH GRANITE  
MONUMENTS ABOUT 1930 BY LINCOLN  
COUNTY SURVEYOR.

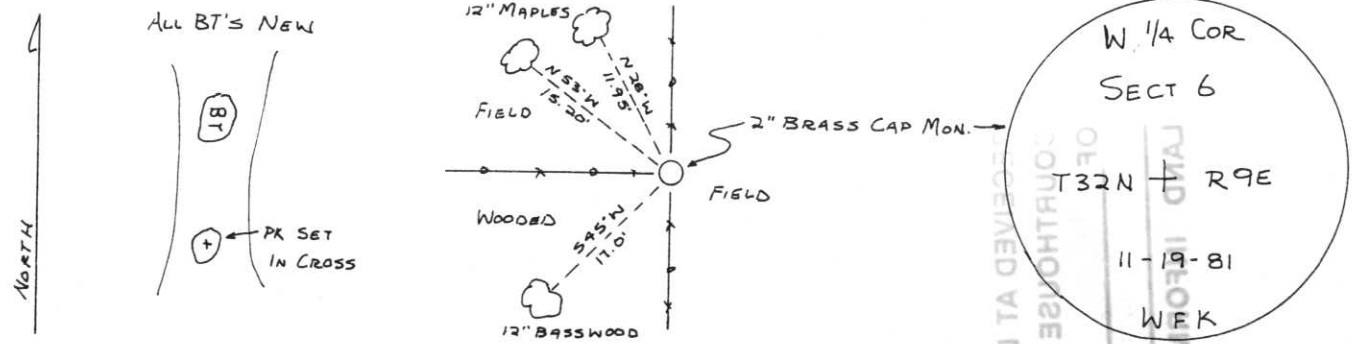
Sec 1-32-8 E 1/4 cr.

Description of corner evidence found:

GRANITE MONUMENT LOCATED TILTED  
OUT OF POSITION. SET NEW 2"x 42"  
BLACK IRON PIPE WITH BRASS CAP MON.  
AS CORNER. GRANITE MON. AND STONES  
PLACED AROUND PIPE.



Description of monument and accessories I established to perpetuate the original location of this corner.



Dated at ELCHO, Wis., this 19<sup>th</sup> day of Nov., 19 81

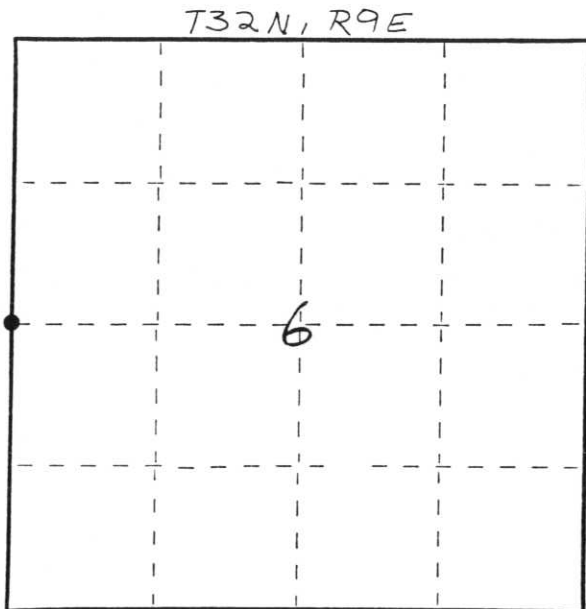
Signature William F. Kelly Title COUNTY SURVEYOR Registration No. 1098  
(County Surveyor, Registered Land Surveyor, or other duly authorized official)

Office of Register of Deeds, County of \_\_\_\_\_, I hereby certify that the within instrument was filed in this office for record on the \_\_\_\_\_ day of \_\_\_\_\_, 19 \_\_\_\_\_ at \_\_\_\_\_ o'clock \_\_\_\_\_ M.

(Register of Deeds)

By \_\_\_\_\_ Deputy

FORM 985 M. C. MILLER CO., MILWAUKEE



○ = Corner monument restored.

13285

