

# Attachment to Tie Sheet Y-25 T32N, R7E

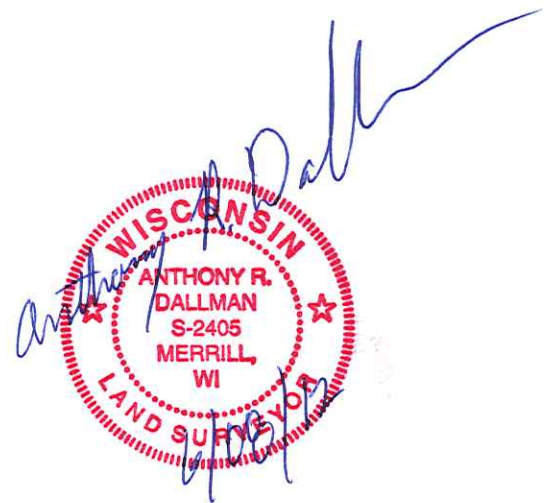
Visited this corner on May 18, 2012 and found all of the Reference Monument in good condition. Set a Berntsen Spike per the Tie Sheet. Field Book #5 Page 134.

*Anthony Dallman* *6/08/12*

---

Anthony Dallman

Lincoln County Surveyor

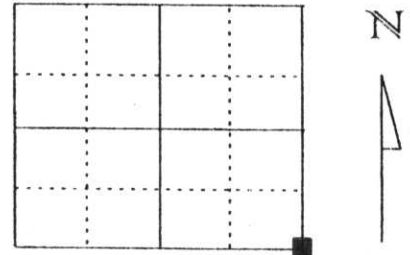


Y-25

# U.S. PUBLIC LAND SURVEY MONUMENT RECORD

Note: This form is intended and designed to fulfill all requirements of Wisconsin Administrative Code, Chapter A-E 5.02, U.S. Public Land Survey Monument Record (3) (a) (b) (c) (d) (e) (f) (g) (h) (l). An additional sheet may be added if necessary to conform with said requirements.

(a) Corner location: Township 32 North  
 Range 7 East  
 Town/City/Village CORNING  
 County Lincoln



Southeast corner, Section 36

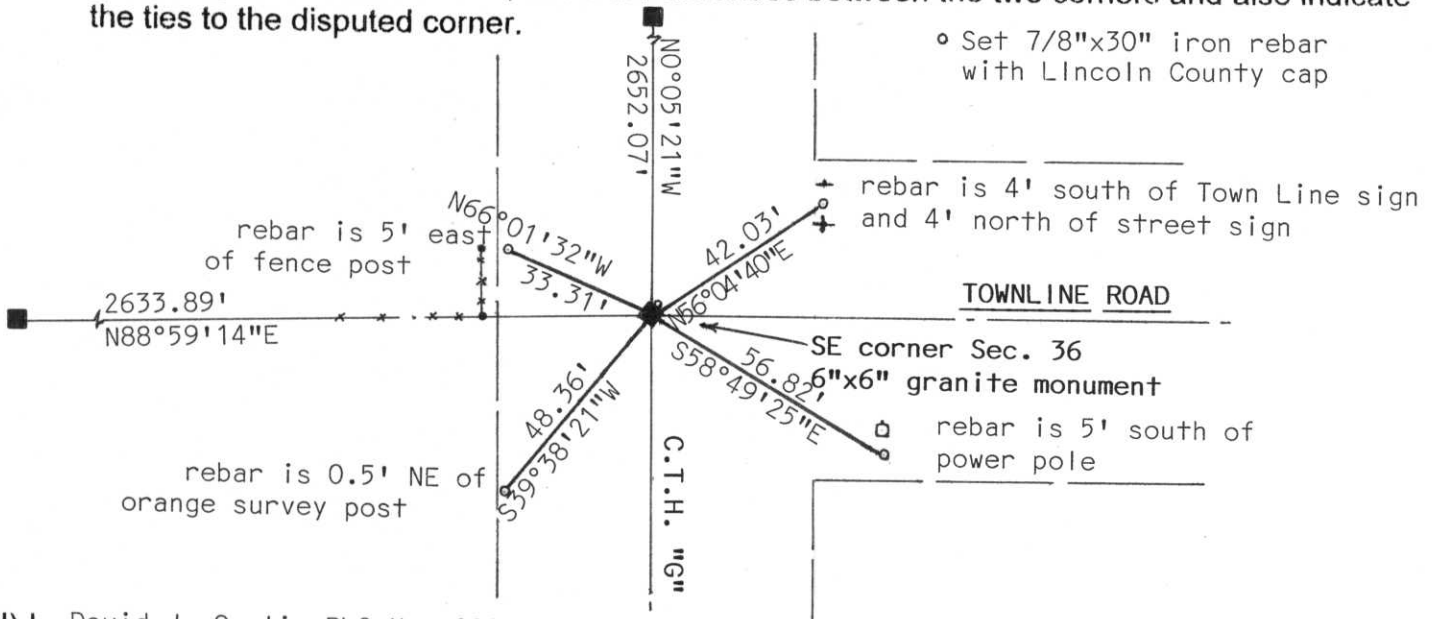
(b) (f) (g) (h) Description of monument found at this corner and if it was accepted, state all evidence (material, testimonial, occupational, plats, records, other monuments) used as a basis for accepting. If not accepted or if nothing was found, state evidence used as basis for establishing location. If reestablished through lost corner proportionate methods, indicate all monuments, distances and directions used to establish.

Notes of the original government survey indicate wood posts were set at all section and quarter-section corners. Stone Monuments were subsequently placed at these corners during remonumentation surveys.

We dug at centerline road intersection with Lincoln County backhoe. Found 6" x 6" Granite monument 2.7 feet below the surface of the road and at centerline intersection. Stone was in good condition. Set 3/4"x24" iron pipe on NE side of stone.

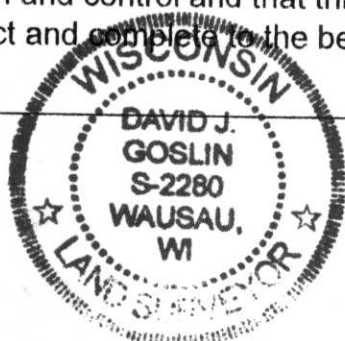
**RECEIVED AT LINCOLN COUNTY  
 COURTHOUSE THIS 1st DAY  
 OF Feb. 2000  
*Pat Priebe*  
 LAND INFORMATION OFFICE**

(c) (d) (e) Plan view of corner with ties to at least 4 witness monuments. If in disagreement with previously established corner, show the distances between the two corners and also indicate the ties to the disputed corner.



(l) I, David J. Goslin RLS No. 2280  
 (type or print name) certify that the corner location on this record was determined by me or under my direction and control and that this U.S. Public Land Survey Monument Record is correct and complete to the best of my knowledge and belief.

*David J. Goslin*  
 Signature



1-28-00  
 Date

Index No. 9-25

















