

U.S. PUBLIC LAND SURVEY MONUMENT RECORD

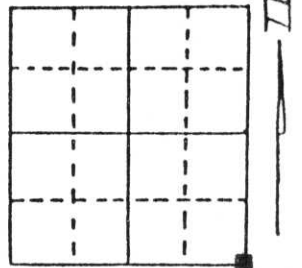
Note: This form is intended and designed to fulfill all requirements of Wisconsin Administrative Code, Chapter A-E 5.02, U.S. Public Land Survey Monument Record (3) (a) (b) (c) (d) (e) (f) (g) (h) (i). An additional sheet may be added if necessary to conform with said requirements.

(a) Corner location: Township 32 North

Range _____ East

Town/City/Village MERRILL

County LINCOLN



Section 33

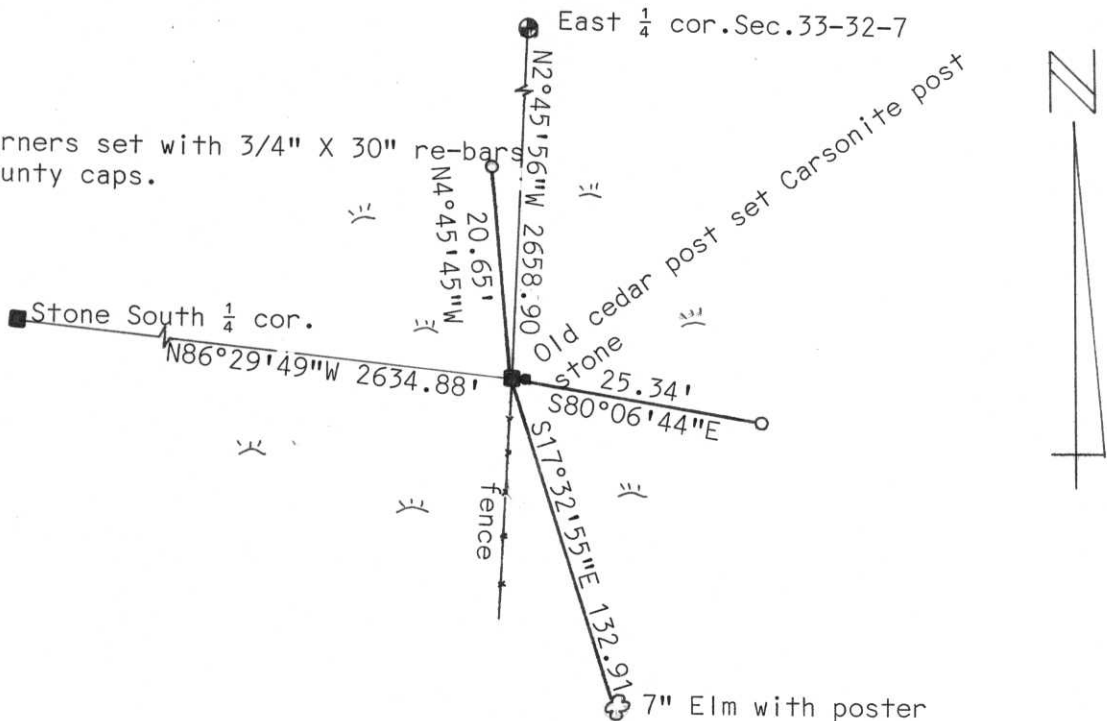
(b) (f) (g) (h) Description of monument found at this corner and if it was accepted, state all evidence (material, testimonial, occupational, plats, records, other monuments) used as a basis for accepting. If not accepted or if nothing was found, state evidence used as basis for establishing location. If reestablished through lost corner proportionate methods, indicate all monuments, distances and directions used to establish.

Calculated corner location from adjacent corners traversed to approximate location. Found 8" X 8" Granite stone tipped with corner location cut into top of stone. Straightened monument and tied out. Corner was 400'± into alder swamp on old down fence line.

**RECEIVED AT LINCOLN COUNTY
COURTHOUSE THIS 23rd DAY
OF Sept. 19 95
Pat Pruche
TAX DESCRIPTION OFFICE**

(c) (d) (e) Plan view of corner with ties to at least 4 witness monuments. If in disagreement with previously established corner, show the distances between the two corners and also indicate the ties to the disputed corner.

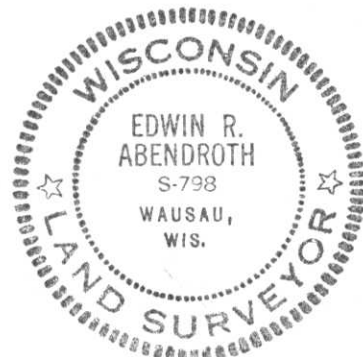
All witness corners set with 3/4" X 30" re-bars with Lincoln County caps.



(i) I, Edwin R. Abendroth RLS No. S-798

(type or print name) certify that the corner location on this record was determined by me or under my direction and control and that this U.S. Public Land Survey Monument Record is correct and complete to the best of my knowledge and belief.

Edwin R. Abendroth 9-20-95
Signature Date



Index No. 9-13

