

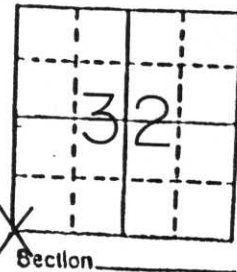
U.S. PUBLIC LAND SURVEY MONUMENT RECORD

Note: This form is intended and designed to fulfill all requirements of Wisconsin Administrative Code, Chapter A-E 5.02, U.S. Public Land Survey Monument Record (3) (a) (b) (c) (d) (e) (f) (g) (h) (i). An additional sheet may be added if necessary to conform with said requirements.

(a) Corner location: Township 32 North

Range 7 East

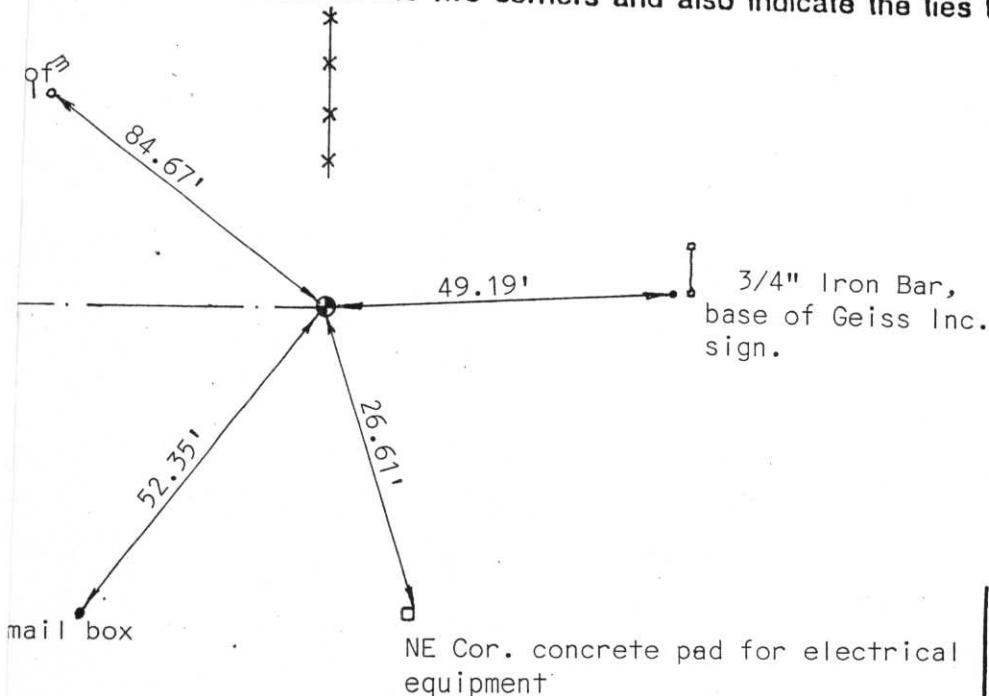
Town Merrill



If a monument found at this corner and if it was accepted, state all evidence (operational, plats, records, other monuments) used as a basis for accepting. If no monument was found, state evidence used as basis for establishing location. If the monument is not found, state corner proportionate methods, indicate all monuments, distances and bearings.

1990 local resident said corner had been dug for, never found. She showed general area that the corner should be. The area she showed us was on the line. Upon close examination, we found an existing PK Nail. Highway plans for USH "51", distances checked with theirs. set Berntsen monument. Tied out.

with ties to at least 4 witness monuments. If in disagreement with previously established distances, indicate the distances between the two corners and also indicate the ties to the



corner was Authorized previously
 however voided due to finding
 of a stone marker. No payment was
 made. Surveyor will set stone
 marker in spring of next
 year. Another surveyor set
 stone marker.

I certify that the corner location on this record was established under my direction and control and that this U.S. Public Land Survey Monument Record is correct and complete to the best of my knowledge and belief.

Edwin R. Abendroth Feb. 27, 1990
 Signature _____ Date _____



Index No. 9-5

RECEIVED AT LINCOLN COUNTY
 COURTHOUSE THIS 27 DAY
 OF Feb 1990.

 TAX DESCRIPTION OFFICE



19 11:44 AM

GEISS INC.
GEISS MEAT
QUALITY SERVICE
LITTLE FLORIDA
OFFICE

19 11:44 AM



19 11:43 AM



19 11:43AM