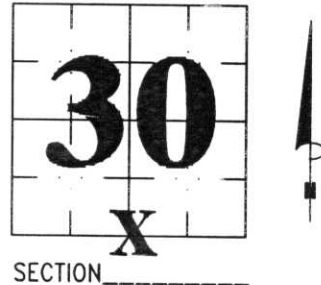


U.S. PUBLIC LAND SURVEY MONUMENT RECORD

NOTE: THIS FORM IS INTENDED AND DESIGNED TO FULFILL ALL REQUIREMENTS OF WISCONSIN ADMINISTRATIVE CODE, CHAPTER A-E 7.08 U.S. PUBLIC LAND SURVEY MONUMENT RECORD (3) (a) (b) (c) (d) (e) (f) (g) (h) (i). AN ADDITIONAL SHEET MAY BE ADDED IF NECESSARY TO CONFORM WITH SAID REQUIREMENTS.

(a) CORNER LOCATION: TOWNSHIP 32 NORTH
 RANGE 7 EAST/~~WEST~~
 TOWN/~~CITY/VILLAGE~~ MERRILL
 COUNTY LINCOLN



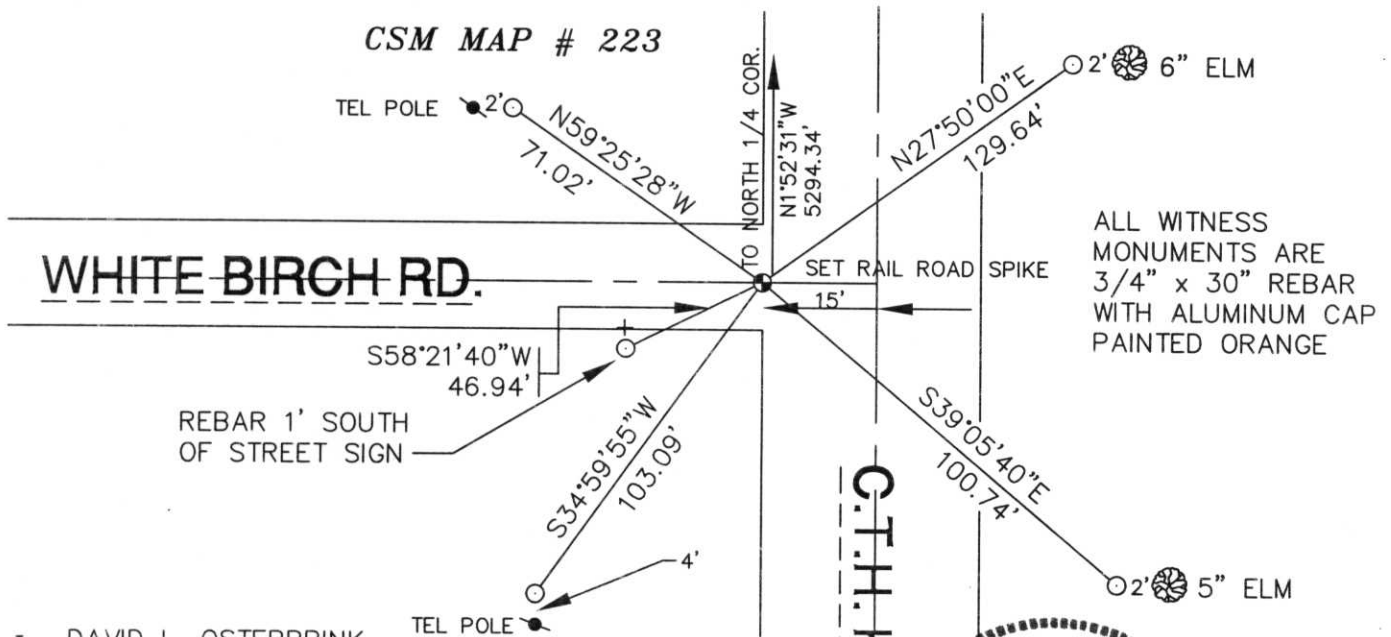
(b) (f) (g) (h) DESCRIPTION OF MONUMENT FOUND AT THIS CORNER AND IF IT WAS ACCEPTED, STATE ALL EVIDENCE (MATERIAL, TESTIMONIAL, OCCUPATIONAL, PLATS, RECORDS, OTHER MONUMENTS) USED AS BASIS FOR ACCEPTING. IF NOT ACCEPTED OR IF NOTHING WAS FOUND, STATE EVIDENCE USED AS BASIS FOR ESTABLISHING LOCATION. IF REESTABLISHED THROUGH LOST CORNER PROPORTIONATE METHODS, INDICATE ALL MONUMENTS, DISTANCES AND DIRECTIONS USED TO ESTABLISH. INDICATE TYPE OF MONUMENT FOUND OR SET AND SIGN POST.

THROUGH THE YEARS, WHEN THIS WAS USH 51, REPAVING AND HEAVY TRAFFIC MADE IT IMPOSSIBLE TO USE THIS CORNER. I TIED TO MANY OF THE CERTIFIED SURVEY MAPS THAT USED THIS CORNER, AND THROUGH THE YEARS, FOUND THAT STILL OTHERS HAD USED THE SAME POINT FOR THIS CORNER. I SET A RAILROAD SPIKE IN THE ROAD, FOR THIS CORNER. TIED OUT.

SET RAIL ROAD SPIKE FOR CORNER, FALLS IN BLACK TOP ON EDGE OF C.T.H. K. ORIGINALLY USED CSM MAP # 223 FOR PAPER CORNER OF CORNER, BUT FOUND OTHER SURVEYS IN SECTION ALSO MATCHED THIS POINT.

RECEIVED AT LINCOLN COUNTY
 COURTHOUSE THIS 19 DAY
 OF July 1999
 LAND INFORMATION OFFICE

(c) (d) (e) PLAN VIEW OF CORNER WITH TIES TO AT LEAST 4 WITNESS MONUMENTS. IF IN DISAGREEMENT WITH PREVIOUSLY ESTABLISHED CORNER, SHOW THE DISTANCES BETWEEN THE TWO CORNERS AND ALSO INDICATE THE TIES TO THE DISPUTED CORNER.



ALL WITNESS MONUMENTS ARE 3/4" x 30" REBAR WITH ALUMINUM CAP PAINTED ORANGE

(i) I, DAVID L. OSTERBRINK
 (TYPE OR PRINT NAME) CERTIFY THAT THE CORNER LOCATION ON THIS RECORD WAS DETERMINED BY ME OR UNDER MY DIRECTION AND CONTROL AND THAT THIS U.S. PUBLIC LAND SURVEY MONUMENT RECORD IS CORRECT AND COMPLETE TO THE BEST OF MY KNOWLEDGE AND BELIEF.

David L. Osterbrink 8-8-99
 SIGNATURE DATE



INDEX NO. 05-3



19 12:48 PM



19 12:49 PM



19 12:50 PM