

U.S. PUBLIC LAND SURVEY MONUMENT RECORD

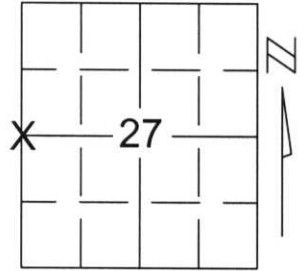
Note: This form is intended and designed to fulfill all requirements of Wisconsin Administrative Code, Chapter A-E 5.02, U.S. Public Land Survey Monument Record (3)(a)(b)(c)(d)(e)(f)(g)(h)(i). An additional sheet may be added if necessary to conform with said requirements.

(a) Corner location: Township 32 North

Range 7 East

Town/City/Village MERRILL

County LINCOLN



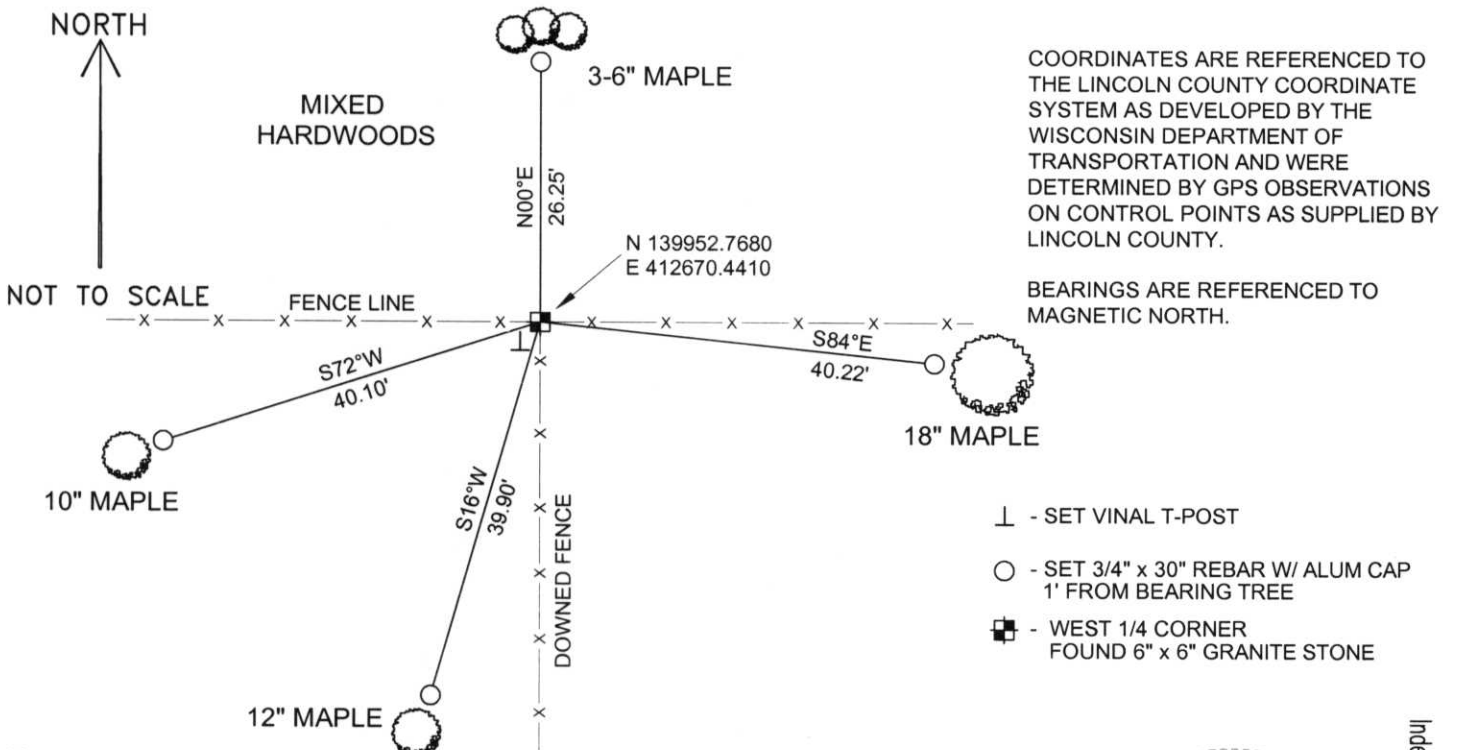
Section 27

(b)(f)(g)(h) Description of monument found at this corner and if it was accepted, state all evidence (material, testimonial, occupational, plats, records, other monuments) used as a basis for accepting. If not accepted or if nothing was found, state evidence used as basis for establishing location. If reestablished through lost corner proportionate methods, indicate all monuments, distances and directions used to establish.

SEARCHED FOR THE WEST 1/4 CORNER OF SECTION 27. FOUND 6" x 6" GRANITE STONE AT THE INTERSECTION OF A EAST-WEST FENCE AND A DOWNED FENCE RUNNING SOUTH. TIED OUT MONUMENT TO PERPETUATE CORNER LOCATION.

RECEIVED AT LINCOLN COUNTY
COURTHOUSE THIS 3RD DAY
OF December 20 02
Zony Dallen
LAND INFORMATION OFFICE

(c)(d)(e) Plan view of corner with ties to at least 4 witness monuments. If in disagreement with previously established corner, show the distances between the two corners and also indicate the ties to the disputed corner.



(i) I, David A. Renaud, RLS certify that the corner location on this record was determined by me or under my direction and control and that this U.S. Public Land Survey Monument Record is correct and complete to the best of my knowledge and belief.

David Renaud 11-29-02
Signature Date



Index No. 273274

S-13



100
90
80
70
60
50
40
30
20
10
0

273374