

U.S. PUBLIC LAND SURVEY MONUMENT RECORD

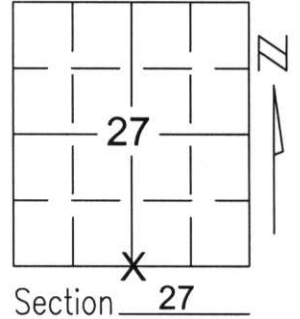
Note: This form is intended and designed to fulfill all requirements of Wisconsin Administrative Code, Chapter A-E 5.02, U.S. Public Land Survey Monument Record (3)(a)(b)(c)(d)(e)(f)(g)(h)(i). An additional sheet may be added if necessary to conform with said requirements.

(a) Corner location: Township 32 North

Range 7 East

Town/City/Village MERRILL

County LINCOLN



Section 27

(b)(f)(g)(h) Description of monument found at this corner and if it was accepted, state all evidence (material, testimonial, occupational, plats, records, other monuments) used as a basis for accepting. If not accepted or if nothing was found, state evidence used as basis for establishing location. If reestablished through lost corner proportionate methods, indicate all monuments, distances and directions used to establish.

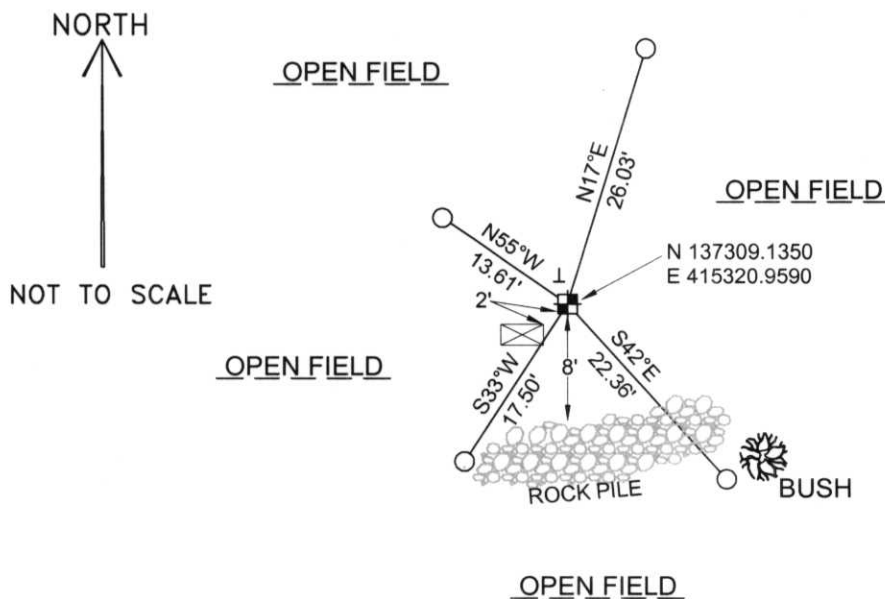
SEARCHED FOR SOUTH 1/4 CORNER AND FOUND 2" IRON PIPE DISTURBED BY UTILITIES. 2" IRON PIPE FIT SINGLE PROPORTIONATE SPLIT WITHIN 1.5 FEET. SET A LINCOLN COUNTY BERNSTEN MONUMENT AT A SINGLE PROPORTIONATE SPLIT BETWEEN THE SOUTHWEST AND SOUTHEAST CORNERS OF SECTION 27. TIED OUT MONUMENT TO PERPETUATE CORNER LOCATION.

RECEIVED AT LINCOLN COUNTY
COURTHOUSE THIS 3RD DAY
OF December 20 02
Tony Dally
LAND INFORMATION OFFICE

(c)(d)(e) Plan view of corner with ties to at least 4 witness monuments. If in disagreement with previously established corner, show the distances between the two corners and also indicate the ties to the disputed corner.

COORDINATES ARE REFERENCED TO THE LINCOLN COUNTY COORDINATE SYSTEM AS DEVELOPED BY THE WISCONSIN DEPARTMENT OF TRANSPORTATION AND WERE DETERMINED BY GPS OBSERVATIONS ON CONTROL POINTS AS SUPPLIED BY LINCOLN COUNTY.

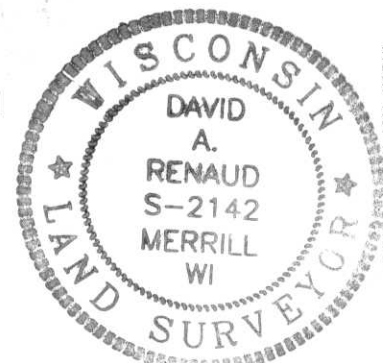
BEARINGS ARE REFERENCED TO MAGNETIC NORTH.



- ☒ - UNDERGROUND TELE. PEDESTAL
- ⊥ - VINAL T-POST MARKER
- - SET 3/4" x 30" REBAR W/ ALUM CAP
- ⊠ - SOUTH 1/4 CORNER SET LINCOLN COUNTY MONUMENT W/ ALUM CAP

(i) I, David A. Renaud, RLS certify that the corner location on this record was determined by me or under my direction and control and that this U.S. Public Land Survey Monument Record is correct and complete to the best of my knowledge and belief.

David Renaud 11-29-02
Signature Date



Index No. 273277

U-15

6
3
6
4

6

DATE

273277

