

U.S. PUBLIC LAND SURVEY MONUMENT RECORD

NOTE: THIS FORM IS INTENDED AND DESIGNED TO FULFILL ALL REQUIREMENTS OF WISCONSIN ADMINISTRATIVE CODE, CHAPTER A-E 7.08, U.S. PUBLIC LAND SURVEY MONUMENT RECORD (3)(a)(b)(c)(d)(e)(f)(g)(h)(i). ADDITIONAL SHEETS MAY BE NECESSARY TO CONFORM TO SAID REQUIREMENTS.

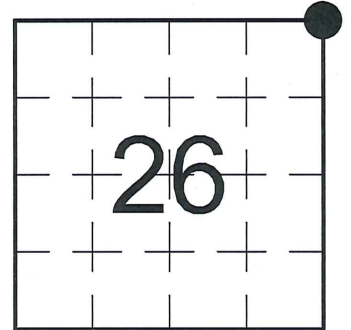
T 32 N, R 7 E

(a) CORNER LOCATION:

NORTHEAST CORNER, SECTION 26
 TOWNSHIP 32 NORTH
 RANGE 7 EAST
 TOWN OF SCHLEY
 LINCOLN COUNTY
 WISCONSIN

(b) HISTORY OF ORIGINAL CORNER:

ORIGINAL SURVEYOR: A.G. & F.S. Ellis, Set post
 COMMENCING DATE: April 3, 1852
 COMPLETION DATE: April 15, 1852
 ORIGINAL BEARING TREES:
 12" Hemlock; N 57° W; 9 links
 12" Hemlock; S 19° E; 23 links

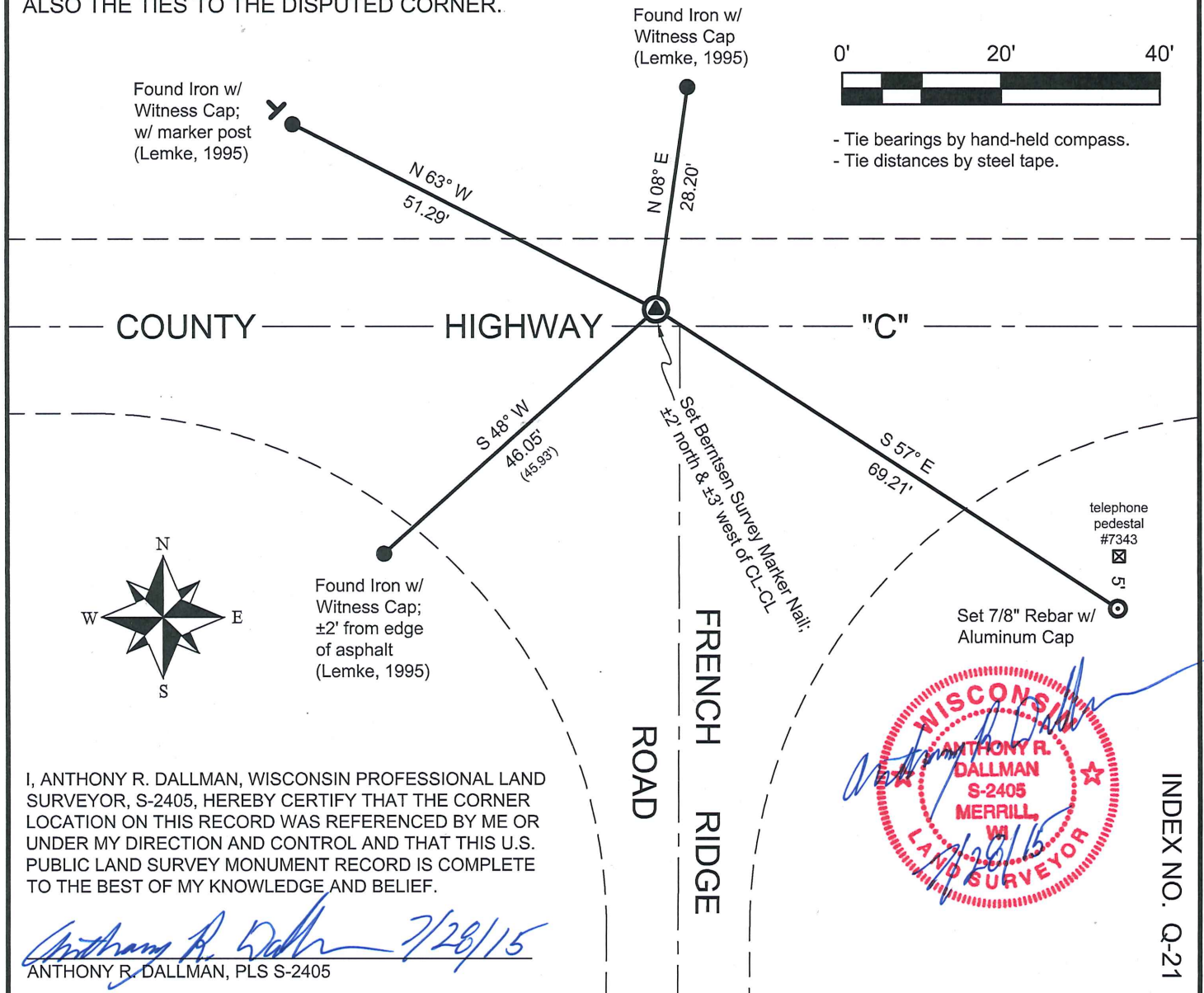


(f)(g)(h) DESCRIPTION OF MONUMENT FOUND AT THIS CORNER AND IF IT WAS ACCEPTED. STATE ALL EVIDENCE (MATERIAL, TESTIMONIAL, OCCUPATIONAL, PLATS, RECORDS, OTHER MONUMENTS) USED AS A BASIS FOR ESTABLISHING LOCATION. IF RE-ESTABLISHING THROUGH LOST CORNER PROPORTIONATE METHODS, INDICATE ALL MONUMENTS, DISTANCES, AND DIRECTIONS USED TO ESTABLISH. INDICATE TYPE OF MONUMENTS FOUND OR SET.

05/22/1995 - D. Lemke, PLS-1845, excavated highway at intersection with French Ridge Road and found a Granite Stone, ±2' below pavement. He set a 1" Iron Bar along the north side of the Stone and set reference ties to the Stone to perpetuate the corner location.

09/25/2013 - I, Anthony R. Dallman, PLS-2405, found no monumentation at the corner location. I set a Berntsen Survey Marker Nail at the intersection of the existing NW & NE reference ties (1995). I set one additional reference tie and remeasured one existing tie to further perpetuate the corner location, as shown in the sketch below.

(c)(d)(e) PLAN VIEW OF THE CORNER WITH TIES TO AT LEAST FOUR WITNESSES. IF IN DISAGREEMENT WITH PREVIOUSLY ESTABLISHED CORNER, SHOW THE DISTANCES BETWEEN THE TWO CORNERS AND ALSO THE TIES TO THE DISPUTED CORNER.



I, ANTHONY R. DALLMAN, WISCONSIN PROFESSIONAL LAND SURVEYOR, S-2405, HEREBY CERTIFY THAT THE CORNER LOCATION ON THIS RECORD WAS REFERENCED BY ME OR UNDER MY DIRECTION AND CONTROL AND THAT THIS U.S. PUBLIC LAND SURVEY MONUMENT RECORD IS COMPLETE TO THE BEST OF MY KNOWLEDGE AND BELIEF.

Anthony R. Dallman 7/28/15
 ANTHONY R. DALLMAN, PLS S-2405

INDEX NO. Q-21

U.S. PUBLIC LAND SURVEY MONUMENT RECORD

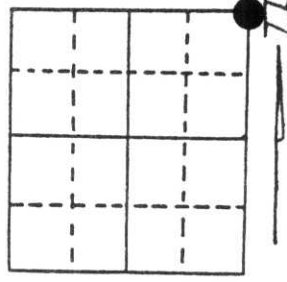
Note: This form is intended and designed to fulfill all requirements of Wisconsin Administrative Code, Chapter A-E 5.02, U.S. Public Land Survey Monument Record (3) (a) (b) (c) (d) (e) (f) (g) (h) (i). An additional sheet may be added if necessary to conform with said requirements.

(a) Corner location: Township 32 North

Range 7 East

Town/City/Village TOWN OF MERRILL

County LINCOLN

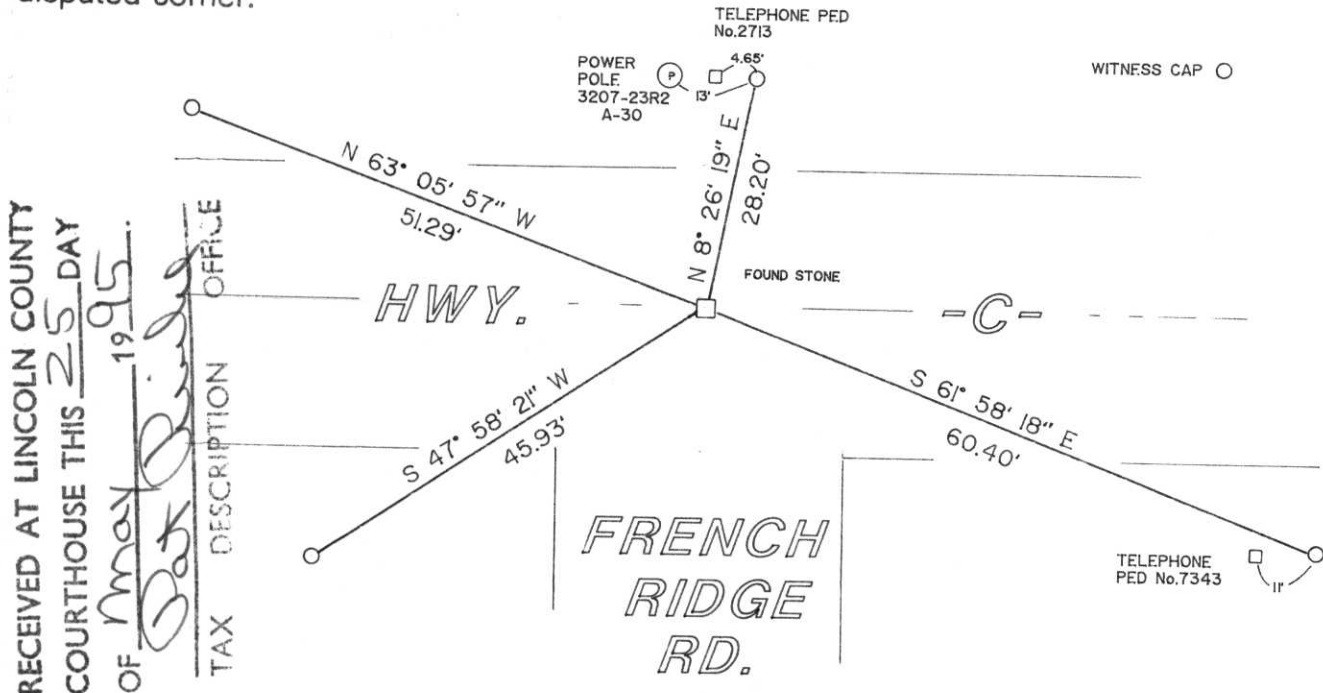


Section 26

(b) (f) (g) (h) Description of monument found at this corner and if it was accepted, state all evidence (material, testimonial, occupational, plats, records, other monuments) used as a basis for accepting. If not accepted or if nothing was found, state evidence used as basis for establishing location. If reestablished through lost corner proportionate methods, indicate all monuments, distances and directions used to establish.

EXCAVATED HIGHWAY AT INTERSECTION WITH FRENCH RIDGE RD. FOUND A GRANITE STONE ± 2' BELOW PAVEMENT. SET 1" BAR NORTH SIDE OF STONE.

(c) (d) (e) Plan view of corner with ties to at least 4 witness monuments. If in disagreement with previously established corner, show the distances between the two corners and also indicate the ties to the disputed corner.



RECEIVED AT LINCOLN COUNTY
 COURTHOUSE THIS 25 DAY
 OF May 1995
 OF David Lemke
 TAX DESCRIPTION OFFICE

(i) I, DAVID L. LEMKE
 (type or print name) certify that the corner location on this record was determined by me or under my direction and control and that this U.S. Public Land Survey Monument Record is correct and complete to the best of my knowledge and belief.

David Lemke
 Signature

MAY 22, 1995

Date



Index No. Q-21