

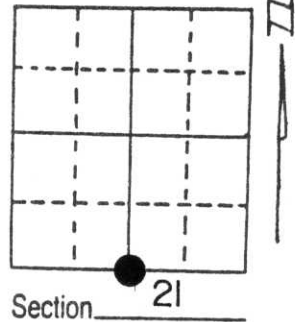
# U.S. PUBLIC LAND SURVEY MONUMENT RECORD

Note: This form is intended and designed to fulfill all requirements of Wisconsin Administrative Code, Chapter A-E 5.02, U.S. Public Land Survey Monument Record (3) (a) (b) (c) (d) (e) (f) (g) (h) (i). An additional sheet may be added if necessary to conform with said requirements.

(a) Corner location: Township 32 North  
 Range 71 East

Town/City/Village TN. OF MERRILL

County LINCOLN



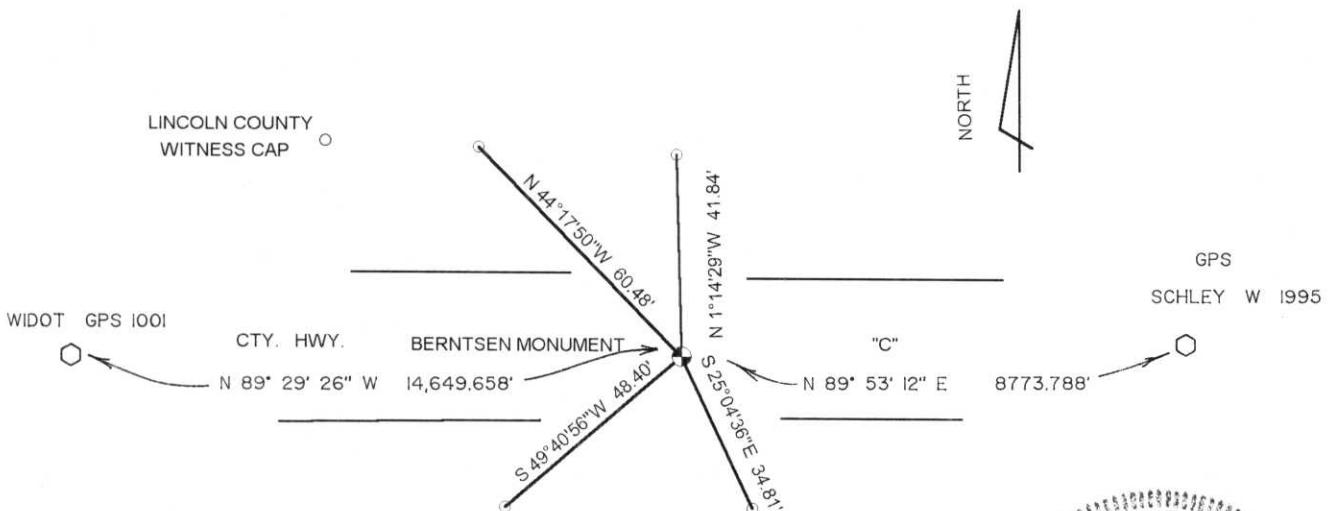
(b) (f) (g) (h) Description of monument found at this corner and if it was accepted, state all evidence (material, testimonial, occupational, plats, records, other monuments) used as a basis for accepting. If not accepted or if nothing was found, state evidence used as basis for establishing location. If reestablished through lost corner proportionate methods, indicate all monuments, distances and directions used to establish.

CORNER POSITION IS IN A FILL AREA. EXCAVATED THE ROAD DOWN TO WET CLAY TYPE SOILS BELOW SURROUNDING GRADE NO EVIDENCE OF ANYTHING FOUND

SET CORNER EQUAL DISTANCE BETWEEN SOUTHEAST AND SOUTHWEST CORNER POSITIONS

RECEIVED AT LINCOLN COUNTY  
 COURTHOUSE THIS 28th DAY  
 OF June 19 96  
*Pat Pruder*  
 TAX DESCRIPTION OFFICE

(c) (d) (e) Plan view of corner with ties to at least 4 witness monuments. If in disagreement with previously established corner, show the distances between the two corners and also indicate the ties to the disputed corner.



(i) I, DAVID L. LEMKE  
 (type or print name) certify that the corner location on this record was determined by me or under my direction and control and that this U.S. Public Land Survey Monument Record is correct and complete to the best of my knowledge and belief.

*David Lemke* 6.13.96  
 Signature Date

