

# U.S. PUBLIC LAND SURVEY MONUMENT RECORD

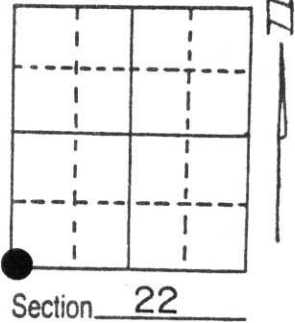
Note: This form is intended and designed to fulfill all requirements of Wisconsin Administrative Code, Chapter A-E 5.02, U.S. Public Land Survey Monument Record (3) (a) (b) (c) (d) (e) (f) (g) (h) (i). An additional sheet may be added if necessary to conform with said requirements.

(a) Corner location: Township 32 North

Range 7 East

Town/City/Village TN. OF MERRILL

County LINCOLN



(b) (f) (g) (h) Description of monument found at this corner and if it was accepted, state all evidence (material, testimonial, occupational, plats, records, other monuments) used as a basis for accepting. If not accepted or if nothing was found, state evidence used as basis for establishing location. If reestablished through lost corner proportionate methods, indicate all monuments, distances and directions used to establish.

ORIGINAL CORNER SET IN 1852

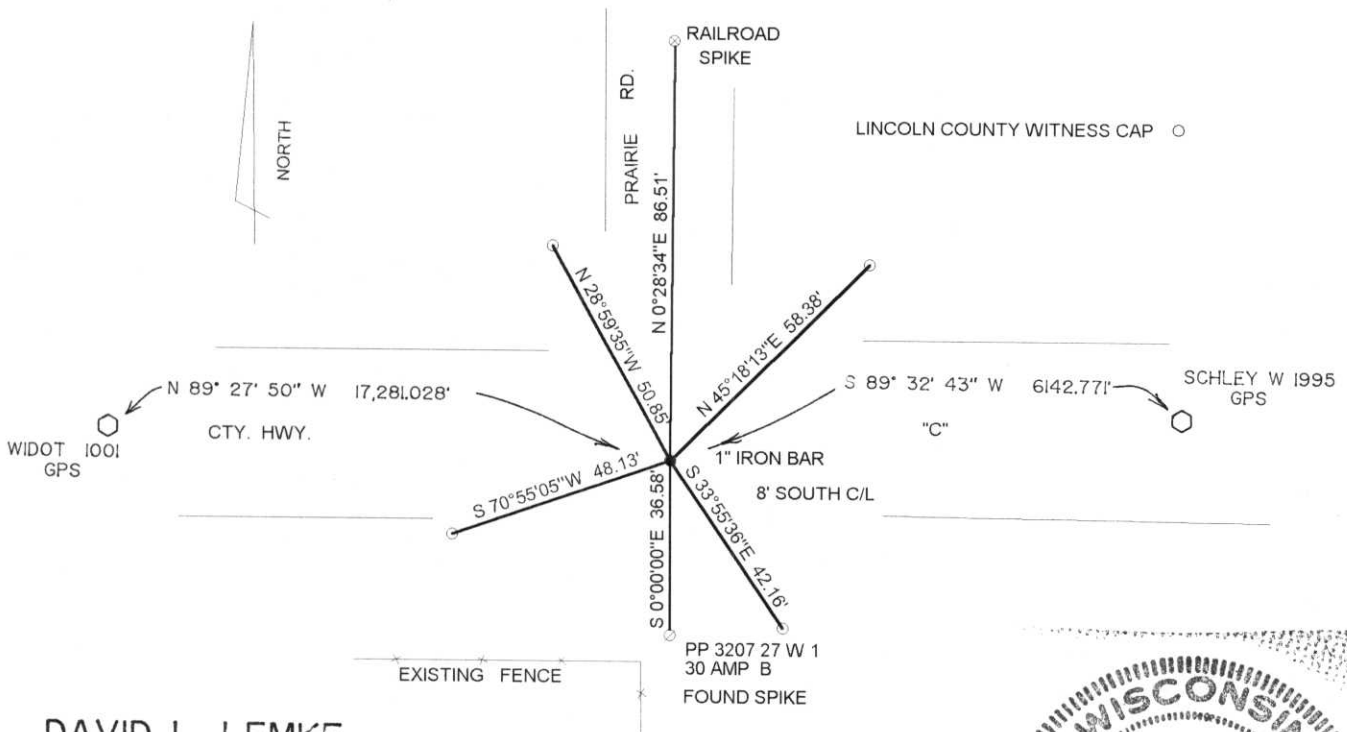
DOT PLAT OF 1948 SHOWS CORNER 8' SOUTH C/L

SEYMOUR IN 1987 RESET CORNER PER 1948 HWY. PLAT

I FOUND SEYMOUR'S CORNER AND ALL OF HIS TIES. ALL OF WHICH EXCEPT THE PP TIE HAVE BEEN DISTURBED.

RECEIVED AT LINCOLN COUNTY  
COURTHOUSE THIS 28th DAY  
OF June 1996  
*Pat Pruebe*  
TAX DESCRIPTION OFFICE

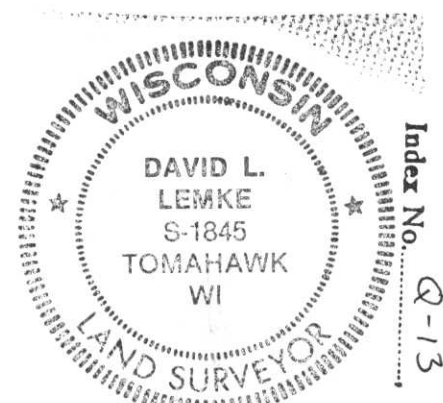
(c) (d) (e) Plan view of corner with ties to at least 4 witness monuments. If in disagreement with previously established corner, show the distances between the two corners and also indicate the ties to the disputed corner.



(i) I, DAVID L. LEMKE

(type or print name) certify that the corner location on this record was determined by me or under my direction and control and that this U.S. Public Land Survey Monument Record is correct and complete to the best of my knowledge and belief.

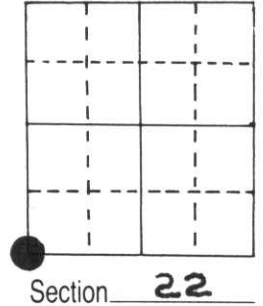
*David Lemke* 6.13.96  
Signature \_\_\_\_\_ Date \_\_\_\_\_



# U.S. PUBLIC LAND SURVEY MONUMENT RECORD

Note: This form is intended and designed to fulfill all requirements of Wisconsin Administrative Code, Chapter A-E 5.02, U.S. Public Land Survey Monument Record (3) (a) (b) (c) (d) (e) (f) (g) (h) (i). An additional sheet may be added if necessary to conform with said requirements.

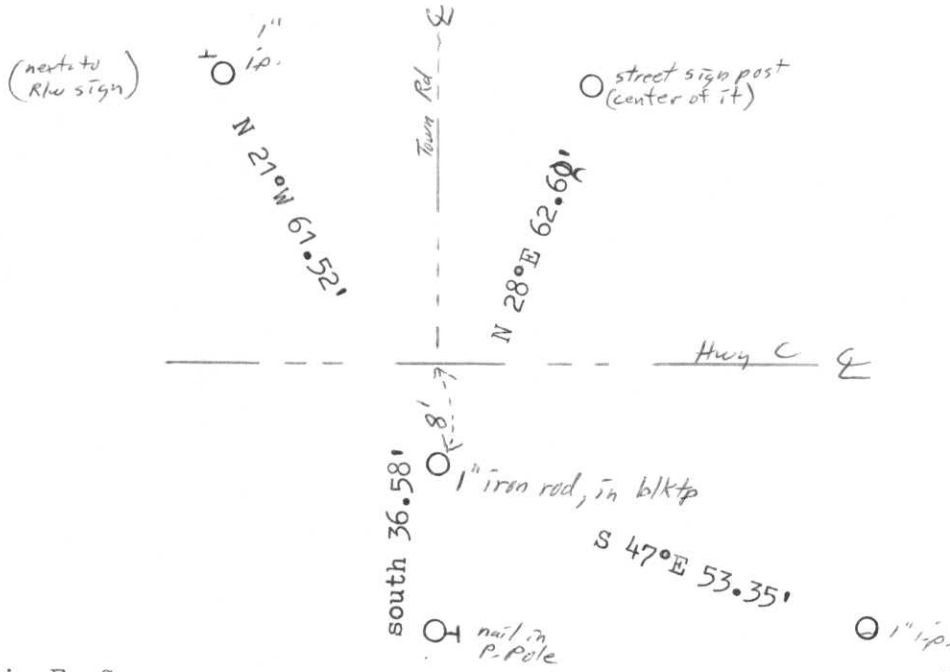
(a) Corner location: Township 32 North  
 Range 7 East ~~West~~  
 Town/City/Village Merrill  
 County Lincoln



(b) (f) (g) (h) Description of monument found at this corner and if it was accepted, state all evidence (material, testimonial, occupational, plats, records, other monuments) used as a basis for accepting. If not accepted or if nothing was found, state evidence used as basis for establishing location. If reestablished through lost corner proportionate methods, indicate all monuments, distances and directions used to establish.

Original in 1852, OBT's BW 15" S88°W 31 lks., pine 20" N53°E 20 lks.  
 D.O.T. shows corner location 8' south of centerline of Hwy. C on plat of ROW. 1948.  
 Seymour in 1987 set iron rod in road in that location.

(c) (d) (e) Plan view of corner with ties to at least 4 witness monuments. If in disagreement with previously established corner, show the distances between the two corners and also indicate the ties to the disputed corner.



(i) I, Marvin E. Seymour  
 (type or print name) certify that the corner location on this record was determined by me or under my direction and control and that this U.S. Public Land Survey Monument Record is correct and complete to the best of my knowledge and belief.

Marvin E. Seymour Dec. 4, 1987  
 Signature Date







9 2:22 PM





9 2:23 PM