

# U.S. PUBLIC LAND SURVEY MONUMENT RECORD

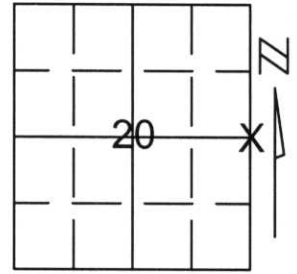
Note: This form is intended and designed to fulfill all requirements of Wisconsin Administrative Code, Chapter A-E 5.02, U.S. Public Land Survey Monument Record (3)(a)(b)(c)(d)(e)(f)(g)(h)(i). An additional sheet may be added if necessary to conform with said requirements.

(a) Corner location: Township 32 North

Range 7 East

Town/City/Village MERRILL

County LINCOLN

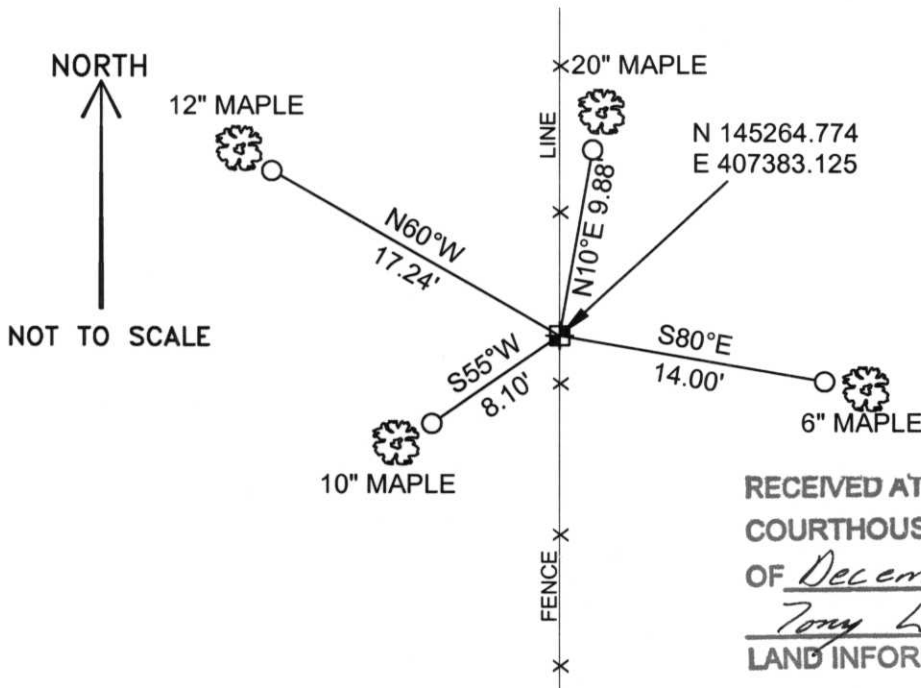


Section 20

(b)(f)(g)(h) Description of monument found at this corner and if it was accepted, state all evidence (material, testimonial, occupational, plats, records, other monuments) used as a basis for accepting. If not accepted or if nothing was found, state evidence used as basis for establishing location. If reestablished through lost corner proportionate methods, indicate all monuments, distances and directions used to establish.

I SEARCHED AN AREA DETERMINED BY MEASURE TO NEARBY CORNERS. I FOUND AN ANCIENT NORTH & SOUTH FENCE LINE AND A GALVANIZED 1 1/2" IRON PIPE IN THE FENCELINE AND WITHIN 5 FEET OF A PRORATED LOCATION FOR THIS CORNER. I ACCPETED THE IRON PIPE AS THE BEST AVAILABLE EVIDENCE OF THE CORNER'S ORIGINAL LOCATION. SET TIES AS SHOWN BELOW TO PERPETUATE CORNER LOCATION.

(c)(d)(e) Plan view of corner with ties to at least 4 witness monuments. If in disagreement with previously established corner, show the distances between the two corners and also indicate the ties to the disputed corner.



COORDINATES ARE REFERENCED TO THE LINCOLN COUNTY COORDINATE SYSTEM AS DEVELOPED BY THE WISCONSIN DEPARTMENT OF TRANSPORTATION AND WERE DETERMINED BY GPS OBSERVATIONS ON CONTROL POINTS AS SUPPLIED BY LINCOLN COUNTY.

BEARINGS ARE REFERENCED TO MAGNETIC NORTH.

- - SET 3/4" x 30" REBAR W/ ALUM CAP 1' FROM BEARING TREE
- ⊕ - NORTHEAST CORNER SET LINCOLN COUNTY MONUMENT W/ ALUM CAP

RECEIVED AT LINCOLN COUNTY COURTHOUSE THIS 3<sup>RD</sup> DAY OF December 20 02  
*Tony Dahn*  
 LAND INFORMATION OFFICE

(i) I, David A. Renaud, RLS S-2142, certify that the corner location on this record was determined by me or under my direction and control and that this U.S. Public Land Survey Monument Record is correct and complete to the best of my knowledge and belief.

David A. Renaud 11-29-02  
 Signature Date



Index No. ....203275

0-9

