

# U.S. PUBLIC LAND SURVEY MONUMENT RECORD

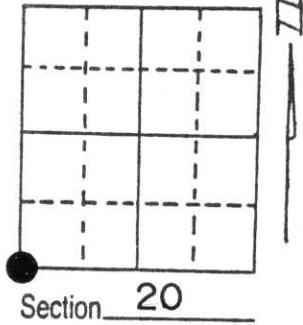
Note: This form is intended and designed to fulfill all requirements of Wisconsin Administrative Code, Chapter A-E 5.02, U.S. Public Land Survey Monument Record (3) (a) (b) (c) (d) (e) (f) (g) (h) (i). An additional sheet may be added if necessary to conform with said requirements.

(a) Corner location: Township 32 North

Range 7 East

Town/City/Village TN. OF MERRILL

County LINCOLN



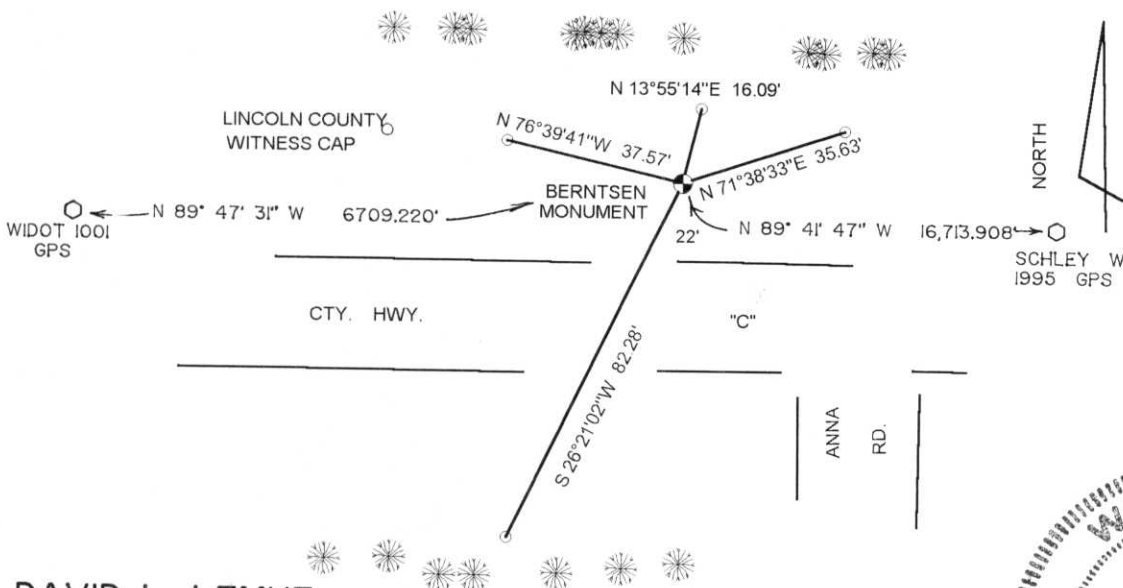
(b) (f) (g) (h) Description of monument found at this corner and if it was accepted, state all evidence (material, testimonial, occupational, plats, records, other monuments) used as a basis for accepting. If not accepted or if nothing was found, state evidence used as basis for establishing location. If reestablished through lost corner proportionate methods, indicate all monuments, distances and directions used to establish.

APRIL 1852 A.G. & F.L. ELLIS SET WOOD POST

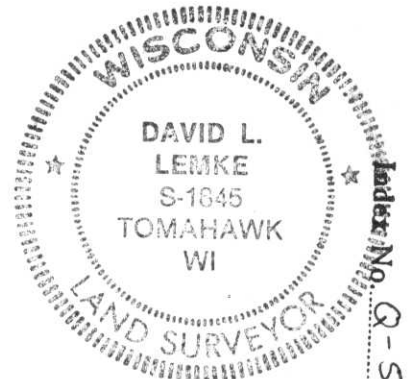
NOVEMBER 1974 BOB WINAT RESET CORNER PER 1948 HWY. R/W PLAT AND EXISTING FENCE LINES WITH A BERNTSEN MONUMENT 33' NORTH OF C/L HWY. "C" WITH 4 TIES.

I FOUND WINAT'S CORNER 22.5' NORTH OF THE NORTH EDGE OF PVMT. HWY. "C" NO EVIDENCE OF TIES

(c) (d) (e) Plan view of corner with ties to at least 4 witness monuments. If in disagreement with previously established corner, show the distances between the two corners and also indicate the ties to the disputed corner.



RECEIVED AT LINCOLN COUNTY  
 COURTHOUSE THIS 28th DAY  
 OF July 1996  
*Pat Chebe*  
 TAX DESCRIPTION OFFICE



(i) I, DAVID L. LEMKE  
 (type or print name) certify that the corner location on this record was determined by me or under my direction and control and that this U.S. Public Land Survey Monument Record is correct and complete to the best of my knowledge and belief.

Signature

Date

*David L. Lemke* 6.13.96

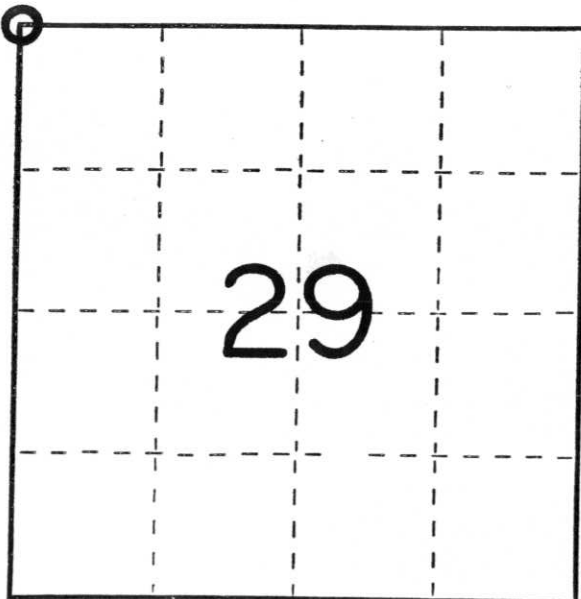
CERTIFIED LAND CORNER RESTORATION

Index No. Q-5

State of Wisconsin }  
County of Lincoln } ss.

I, Robert H. Winat, do hereby certify that on the 4th day of November, 1973, I found evidence of the Northwest corner of Section 29 Township 32 North, Range 7 East, Fourth, Principal Meridian, as described hereon; and that from this evidence I established a new monument and accessories as described hereon to perpetuate the original location of this corner.

Resident witnesses:



○ = Corner monument restored.

History of original corner establishment:

Surveyor: A.G. and F.L. Ellis  
Date: April 9, 1852  
Monumentation: Wood post  
Witness: 18" Hemlock N15°E, 19 lks  
24" Hemlock S34°E, 27 lks

Description of corner evidence found:

Deep road cut here - no direct evidence left.  
Old fences north-south line up ok.

Description of monument and accessories I established to perpetuate the original location of this corner.

Set Berntsen monument - 36" - 33' north of centerline of C.T.H. "C" (Division of Highways survey 1948)  
1/2" rebar w/RHW cap North 69.21'  
1/2" rebar w/RHW cap South 212.81'  
P.K. Nail and disc in 9" White Pine N63°E, 90.54'  
" " " " " 9" Yellow Birch S17°E, 165.12'

Dated at Minocqua, Wis., this 19th day of November, 1974.

Signature Robert H. Winat Title Land Surveyor Registration No. S-1070  
(County Surveyor, Registered Land Surveyor, or other duly authorized official)

Office of Register of Deeds, County of \_\_\_\_\_, I hereby certify that the within instrument was filed in this office for record on the \_\_\_\_\_ day of \_\_\_\_\_, 19\_\_\_\_ at \_\_\_\_\_ o'clock \_\_\_\_\_ M.

(Register of Deeds)

By \_\_\_\_\_ Deputy

RECORDED & INDEXED  
CORNER RESTORED  
NOV 20 1974  
COUNTY CLERK  
LINCOLN COUNTY, WISCONSIN