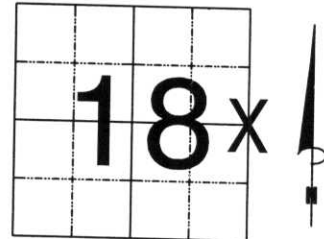


U.S. PUBLIC LAND SURVEY MONUMENT RECORD

NOTE: THIS FORM IS INTENDED AND DESIGNED TO FULFILL ALL REQUIREMENTS OF WISCONSIN ADMINISTRATIVE CODE, CHAPTER LAND SURVEY MONUMENT RECORD (3) (a) (b) (c) (d) (e) (f) (g) (h) (i). AN ADDITIONAL SHEET MAY BE ADDED IF NECESSARY TO CONFORM WITH SAID REQUIREMENTS. A-E 7.08 U.S. PUBLIC

(a) CORNER LOCATION: TOWNSHIP 27 NORTH
 RANGE 8 EAST/WEST
 TOWN/CITY/VILLAGE MERRILL
 COUNTY LINCOLN



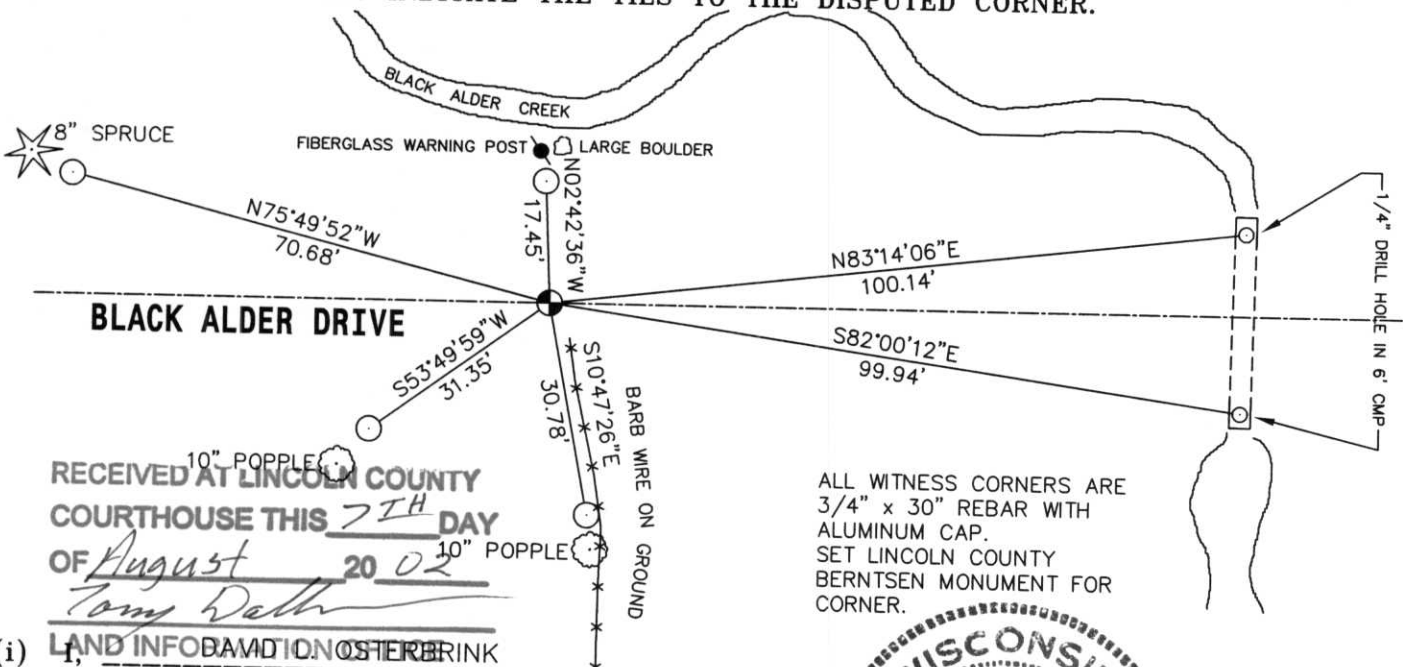
SECTION 18

(b) (f) (g) (h) DESCRIPTION OF MONUMENT FOUND AT THIS CORNER AND IF IT WAS ACCEPTED, STATE ALL EVIDENCE (MATERIAL, TESTIMONIAL, OCCUPATIONAL, PLATS, RECORDS, OTHER MONUMENTS) USED AS BASIS FOR ACCEPTING. IF NOT ACCEPTED OR IF NOTHING WAS FOUND, STATE EVIDENCE USED AS BASIS FOR ESTABLISHING LOCATION. IF REESTABLISHED THROUGH LOST CORNER PROPORTIONATE METHODS, INDICATE ALL MONUMENTS, DISTANCES AND DIRECTIONS USED TO ESTABLISH. INDICATE TYPE OF MONUMENT FOUND OR SET AND SIGN POST.

CORNER WAS ORIGINALLY SET BY ELLIS BROTHERS, CIRCA APRIL, 1852. WE DUG WITH THE HIGHWAY DEPARTMENT GRADALL ON 8-5-02. DUG HOLE 14' EAST WEST BY 18' NORTH - SOUTH. DUG DOWN TO UNDISTURBED SOIL, FOUND NO EVIDENCE OF CORNER.

I HAD TALKED WITH DALE KOPETZKY, AND RUSSELL DREGER, LOCAL LONG TIME LAND OWNERS. THEY DID NOT KNOW OF ANY MONUMENT AT THIS CORNER. KOPETZKY SAID HE HAD PUT A LARGE BOULDER WHERE HE THOUGHT HIS SE PROPERTY CORNER WAS. HE ALSO MENTIONED SOME OLD BARB WIRE, LAYING ON THE GROUND, ON THE SOUTH SIDE OF BLACK ALDER DRIVE. I FOUND THE OLD BARB WIRE AND LARGE BOULDER, AND THEY MATCHED THE AREA THAT I SET THE CORNER AT. I STRAIGHT LINED FROM THE NE CORNER OF SECTION 18, TO THE FUTURE SE CORNER OF SECTION 18 (1" IRON PIPE AS SHOWN ON CSM VOL. 7, PG. 259) I ALSO HELD THE CENTER LINE OF BLACK ALDER DRIVE. THE ORIGINAL NOTES CALL FOR THE CORNER TO BE 1 CHAIN SOUTH OF THE CREEK. THE CREEK WINDS AROUND ON THE NORTH SIDE OF BLACK ALDER DRIVE, AND COULD HAVE BEEN MOVED DURING ROAD CONSTRUCTION. IF I HAD SPLIT THE DISTANCE FOR CORNER LOCATION, IT WOULD HAVE FALLEN IN THE CREEK, OR VERY CLOSE TO IT. I FELT THE COMBINATION OF STRAIGHT LINE WITH CENTER LINE INTERSECTION WAS THE BEST LOCATION FOR THIS CORNER. SET LINCOLN COUNTY BERNTSEN MONUMENT, 8" BELOW SURFACE AT THIS INTERSECTION.

(c) (d) (e) PLAN VIEW OF CORNER WITH TIES TO AT LEAST 4 WITNESS MONUMENTS. IF IN DISAGREEMENT WITH PREVIOUSLY ESTABLISHED CORNER, SHOW THE DISTANCES BETWEEN THE TWO CORNERS AND ALSO INDICATE THE TIES TO THE DISPUTED CORNER.



RECEIVED AT LINCOLN COUNTY COURTHOUSE THIS 7TH DAY OF August 20 02
Tom Dalt

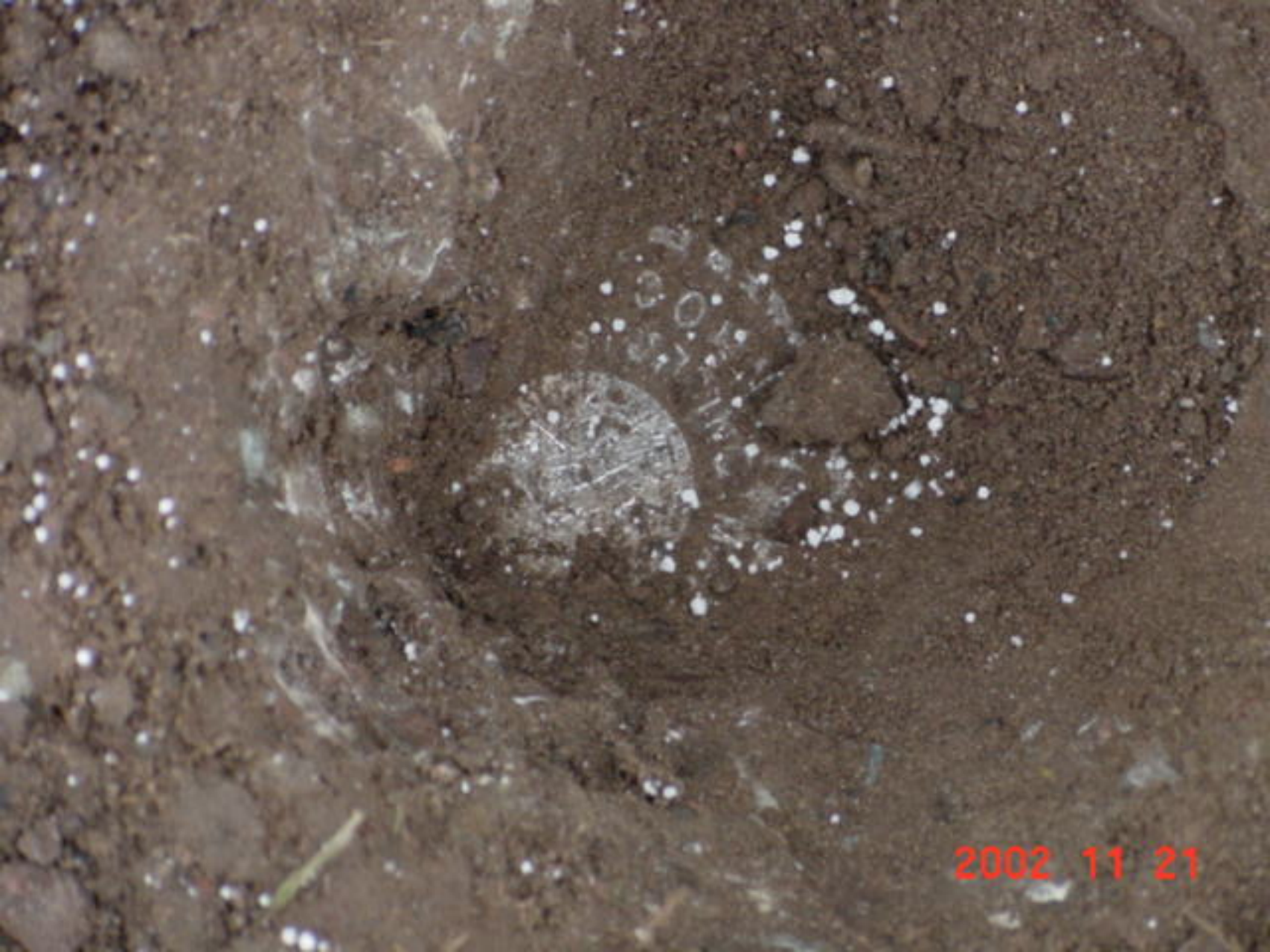
ALL WITNESS CORNERS ARE 3/4" x 30" REBAR WITH ALUMINUM CAP. SET LINCOLN COUNTY BERNTSEN MONUMENT FOR CORNER.

(i) ~~LAND INFORMATION SYSTEM~~
 (TYPE OR PRINT NAME) CERTIFY THAT THE CORNER LOCATION ON THIS RECORD WAS DETERMINED BY ME OR UNDER MY DIRECTION AND CONTROL AND THAT THIS U.S. PUBLIC LAND SURVEY MONUMENT RECORD IS CORRECT AND COMPLETE TO THE BEST OF MY KNOWLEDGE AND BELIEF.

David L. Osterbrink 8-7-02
 SIGNATURE DATE



INDEX NO. K-5



2002 11 21



2002 11 21