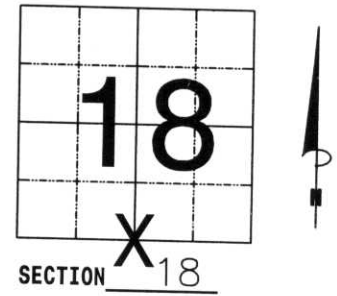


U.S. PUBLIC LAND SURVEY MONUMENT RECORD

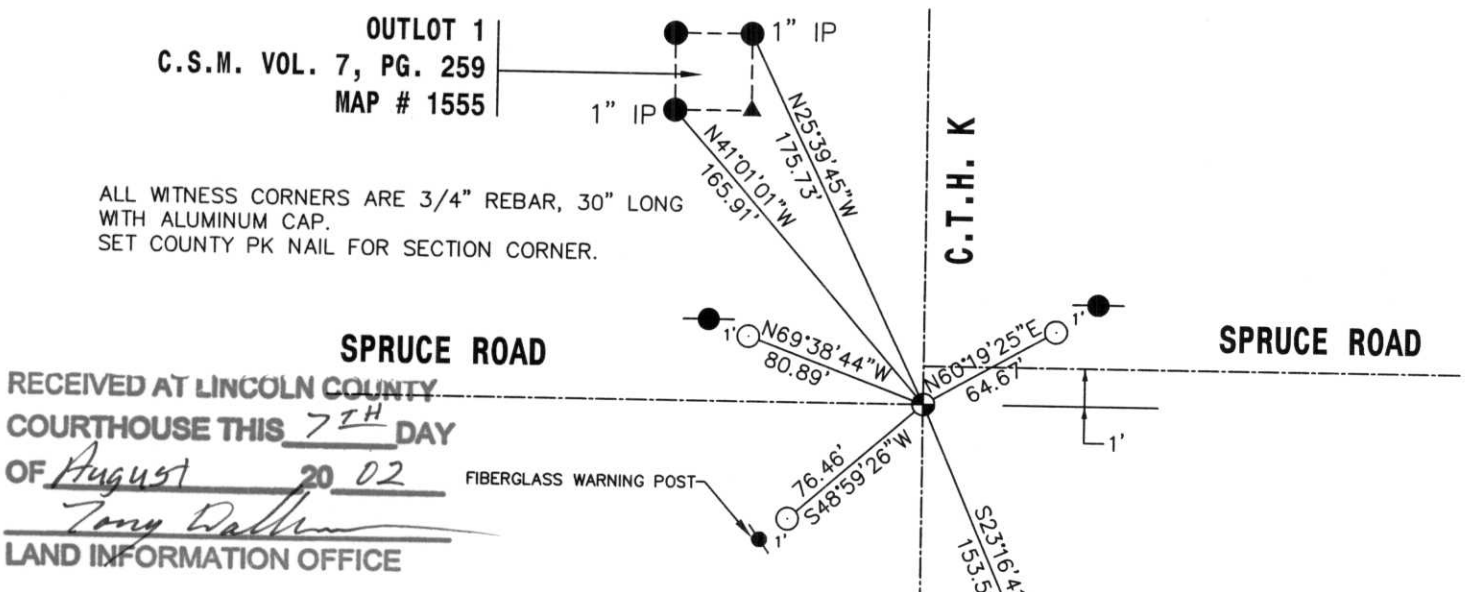
NOTE: THIS FORM IS INTENDED AND DESIGNED TO FULFILL ALL REQUIREMENTS OF WISCONSIN ADMINISTRATIVE CODE, CHAPTER LAND SURVEY MONUMENT RECORD (3) (a) (b) (c) (d) (e) (f) (g) (h) (i). AN ADDITIONAL SHEET MAY BE ADDED IF NECESSARY TO CONFORM WITH SAID REQUIREMENTS. A-E 7.08 U.S. PUBLIC

(a) CORNER LOCATION: TOWNSHIP 27 32 NORTH
 RANGE 8 7 EAST/~~WEST~~
 TOWN/CITY/VILLAGE MERRILL
 COUNTY LINCOLN



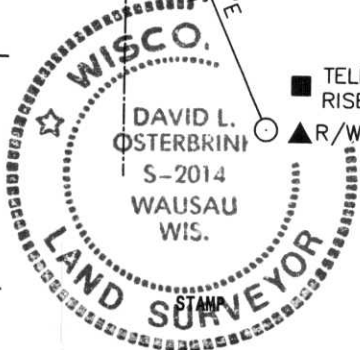
(b) (f) (g) (h) DESCRIPTION OF MONUMENT FOUND AT THIS CORNER AND IF IT WAS ACCEPTED, STATE ALL EVIDENCE (MATERIAL, TESTIMONIAL, OCCUPATIONAL, PLATS, RECORDS, OTHER MONUMENTS) USED AS BASIS FOR ACCEPTING. IF NOT ACCEPTED OR IF NOTHING WAS FOUND, STATE EVIDENCE USED AS BASIS FOR ESTABLISHING LOCATION. IF REESTABLISHED THROUGH LOST CORNER PROPORTIONATE METHODS, INDICATE ALL MONUMENTS, DISTANCES AND DIRECTIONS USED TO ESTABLISH. INDICATE TYPE OF MONUMENT FOUND OR SET AND SIGN POST. CORNER WAS ORIGINALLY SET BY ELLIS BROTHERS, CIRCA APRIL, 1852. DOT HIGHWAY PLANS FROM 1948, SHOW SECTION CORNER ON CENTER LINE INTERSECTION, BUT SAY THEY FOUND NO MONUMENT. I HELD THE CENTER LINE INTERSECTION AS COMPUTED AND SHOWN ON CERTIFIED SURVEY MAP, VOLUME 7, PAGE 259, MAP # 1555. WHEN I DUG FOR THE EAST 1/4 CORNER OF THIS SECTION, THE COUNTY HIGHWAY GRADALL OPERATOR SAID HE REMEMBERED DIGGING FOR THIS CORNER. (THERE IS A 6' x 6' PATCH HERE) THEY HIT CONCRETE WITH REBARS AND GAVE UP. DISTANCES NORTH, SOUTH, EAST & WEST LOOK GOOD. HELD AS CORNER. SET COUNTY PK NAIL FOR CORNER. TIED OUT.

(c) (d) (e) PLAN VIEW OF CORNER WITH TIES TO AT LEAST 4 WITNESS MONUMENTS. IF IN DISAGREEMENT WITH PREVIOUSLY ESTABLISHED CORNER, SHOW THE DISTANCES BETWEEN THE TWO CORNERS AND ALSO INDICATE THE TIES TO THE DISPUTED CORNER.



RECEIVED AT LINCOLN COUNTY
 COURTHOUSE THIS 7TH DAY
 OF August 20 02
Tony Walker
 LAND INFORMATION OFFICE

(i) I, DAVID L. OSTERBRINK
 (TYPE OR PRINT NAME) CERTIFY THAT THE CORNER LOCATION ON THIS RECORD WAS DETERMINED BY ME OR UNDER MY DIRECTION AND CONTROL AND THAT THIS U.S. PUBLIC LAND SURVEY MONUMENT RECORD IS CORRECT AND COMPLETE TO THE BEST OF MY KNOWLEDGE AND BELIEF.
David L. Osterbrink
 SIGNATURE 8-7-02
 DATE



INDEX NO. M-3
 TELEPHONE RISER
 R/W SIGN



19 1:14 PM



19 1:14 PM



19 1:15 PM