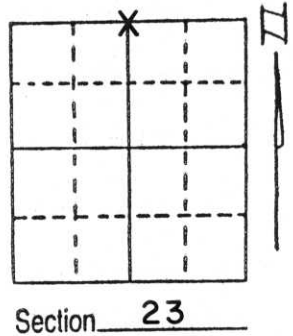


U.S. PUBLIC LAND SURVEY MONUMENT RECORD

Note: This form is intended and designed to fulfill all requirements of Wisconsin Administrative Code, Chapter A-E 5.02, U.S. Public Land Survey Monument Record (3) (a) (b) (c) (d) (e) (f) (g) (h) (i). An additional sheet may be added if necessary to conform with said requirements.

(a) Corner location: Township 32 North
 Range 7 East
 Town/City/Village SCHLEY
 County LINCOLN

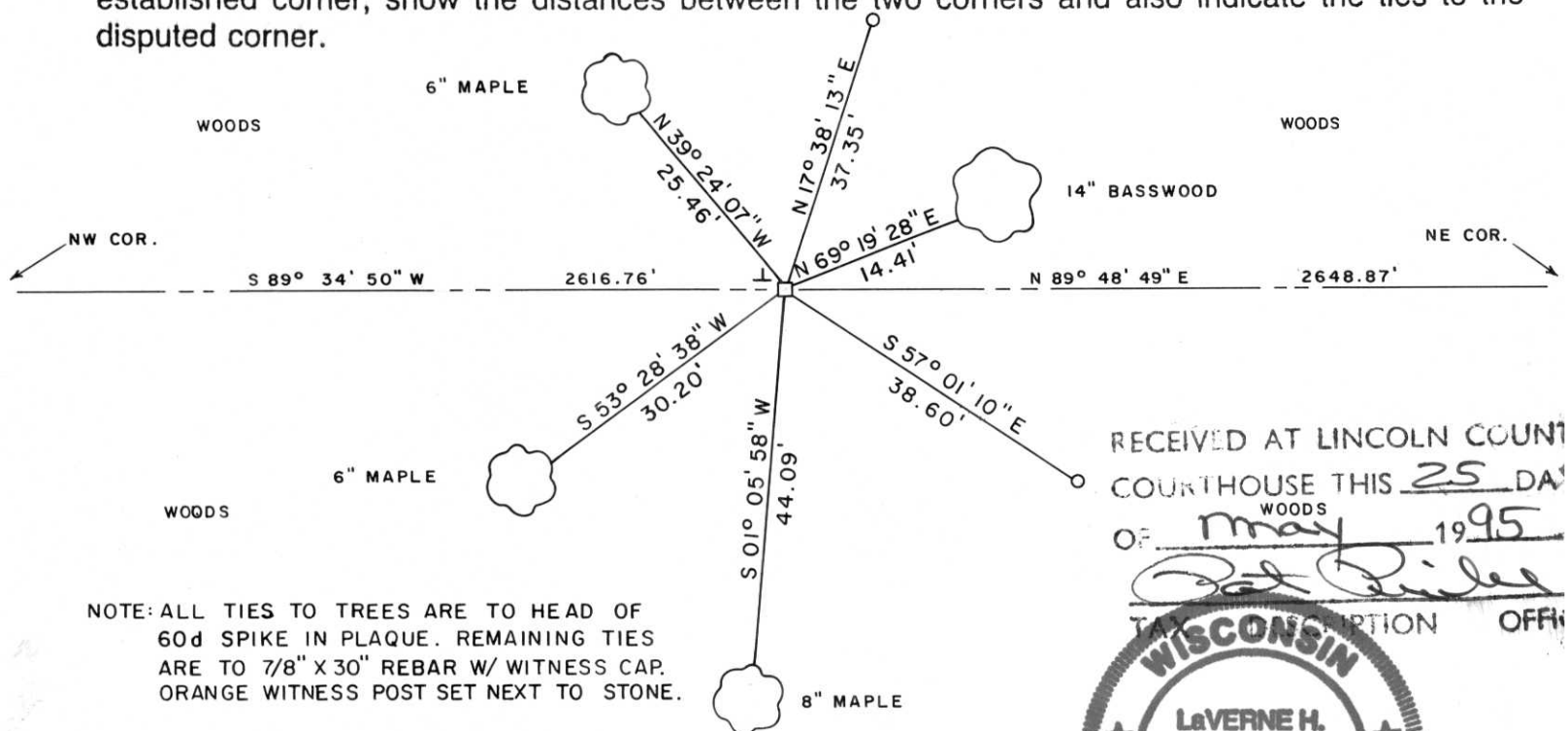


(b) (f) (g) (h) Description of monument found at this corner and if it was accepted, state all evidence (material, testimonial, occupational, plats, records, other monuments) used as a basis for accepting. If not accepted or if nothing was found, state evidence used as basis for establishing location. If reestablished through lost corner proportionate methods, indicate all monuments, distances and directions used to establish.

Original corner: Wood Post 1852 A.F. Ellis.

April 14, 1994: On this date, a 6"x 6" Red Granite Stone was recovered in place, upright and intact. Stone has a cross chiselled on top and protrudes about 8 inches above ground. No record of who placed this monument, but it is most likely the work of Francis Fox, former County Surveyor, who re-surveyed many sections lying to South and West of this Section. Accepted stone as best evidence of corner location as its position is in harmony with adjacent corners found during traverse of entire Section 23.

(c) (d) (e) Plan view of corner with ties to at least 4 witness monuments. If in disagreement with previously established corner, show the distances between the two corners and also indicate the ties to the disputed corner.



NOTE: ALL TIES TO TREES ARE TO HEAD OF 60d SPIKE IN PLAQUE. REMAINING TIES ARE TO 7/8" X 30" REBAR W/ WITNESS CAP. ORANGE WITNESS POST SET NEXT TO STONE.

RECEIVED AT LINCOLN COUNTY COURTHOUSE THIS 25 DAY OF May 1995



(i) I, LaVerne H. Mosher
 (type or print name) certify that the corner location on this record was determined by me or under my direction and control and that this U.S. Public Land Survey Monument Record is correct and complete to the best of my knowledge and belief.

LaVerne H. Mosher
 Signature

MAY 25, 1995
 Date

Index No. M-19