

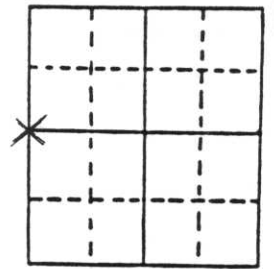
U.S. PUBLIC LAND SURVEY MONUMENT RECORD

Note: This form is intended and designed to fulfill all requirements of Wisconsin Administrative Code, Chapter A-E 7.08 U.S. Public Land Survey Monument Record (3) (a) (b) (c) (d) (e) (f) (g) (h) (i). An additional sheet may be added if necessary to conform with said requirements.

(a) Corner location: Township 32 North
 Range 7 East/West

Town/City/Village SCHLEY

County LINCOLN



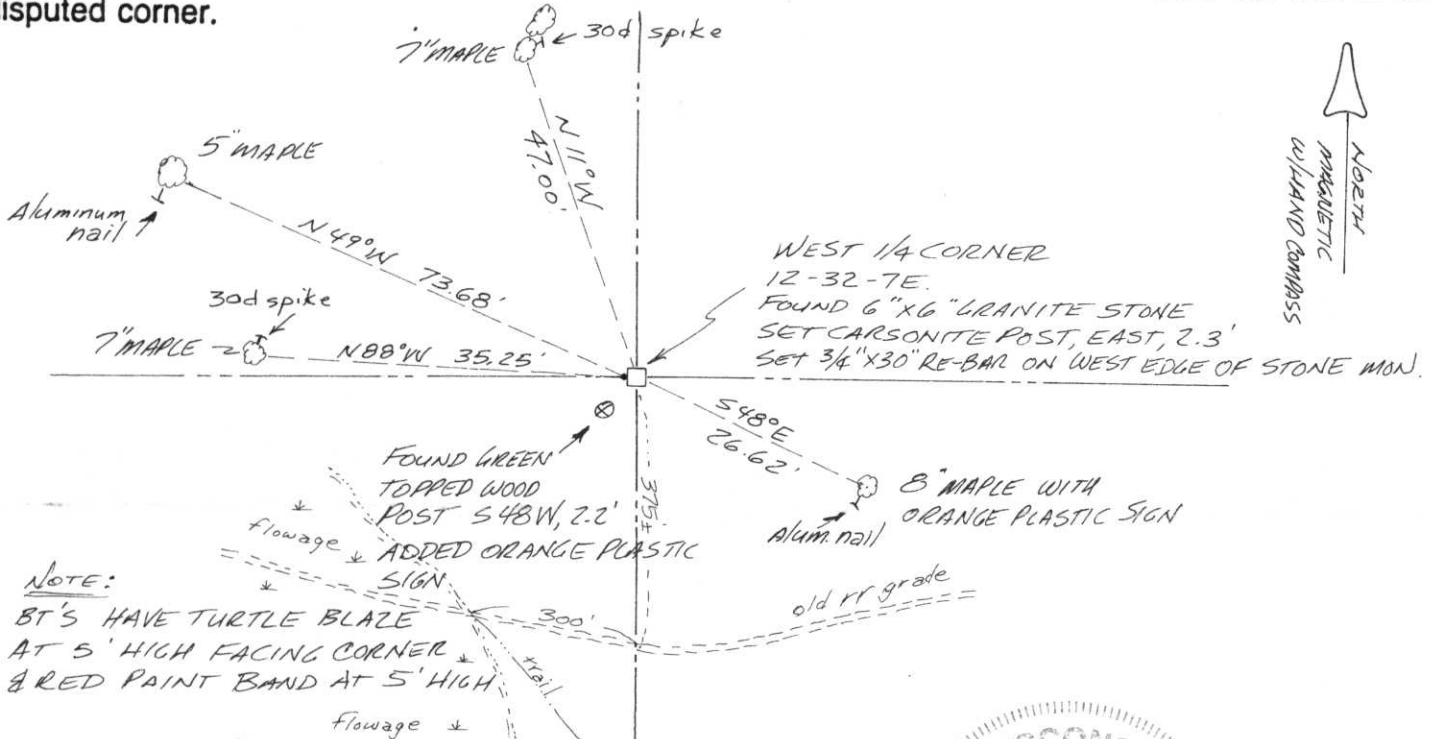
Section 12-32-7

(b) (f) (g) (h) Description of monument found at this corner and if it was accepted, state all evidence (material, testimonial, occupational, plats, records, other monuments) used as a basis for accepting. If not accepted or if nothing was found, state evidence used as basis for establishing location. If reestablished through lost corner proportionate methods, indicate all monuments, distances and directions used to establish. Indicate type of monument found or set and sign post. Map of survey by Genisot & Associates dated 2/13/79 shows this corner to be a granite monument. Same map shows BT's: maple, 5", West, 34.50' and a maple, 4", S50°E, 26.50'. Map also shows "G & W post, 2' SW".

11/05/96 D. Tlusty, D. Williams found 6" x 6" red granite stone, up 1' in good condition. Found the two Genisot BT's, both grown over. Even though we have no original or record evidence of stone being set, I accept it as the best evidence of a previously perpetuated corner location. 03/21/98 D. Tlusty, M. Tlusty, tied and marked corner as shown below.

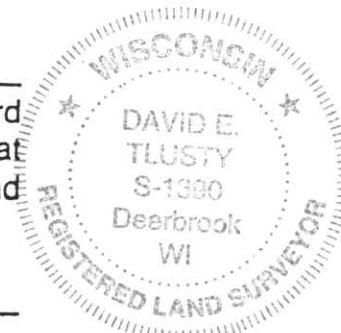
**RECEIVED AT LINCOLN COUNTY
 COURTHOUSE THIS 25th DAY
 OF March 19 99
Pat Priebe
LAND INFORMATION OFFICE**

(c) (d) (e) Plan view of corner with ties to at least 4 witness monuments. If in disagreement with previously established corner, show the distances between the two corners and also indicate the ties to the disputed corner.



(i) I, DAVID E. TLUSTY, REG. LAND SURVEYOR S-1390
 (type or print name) certify that the corner location on this record was determined by me or under my direction and control and that this U.S. Public Land Survey Monument Record is correct and complete to the best of my knowledge and belief.

David E. Tlusty 3/6/99
 Signature Date



Stamp

Index No. G-21



