

U.S. PUBLIC LAND SURVEY MONUMENT RECORD

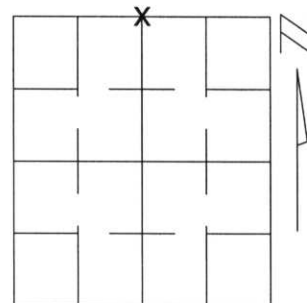
Note: This form is intended and designed to fulfill all requirements of Wisconsin Administrative Code, Chapter A-E 5.02, U.S. Public Land Survey Monument Record (3)(a)(b)(c)(d)(e)(f)(g)(h)(i). An additional sheet may be added if necessary to conform with said requirements.

(a) Corner location: Township 32 North

Range 7 East

Town/City/Village MERRILL

County LINCOLN



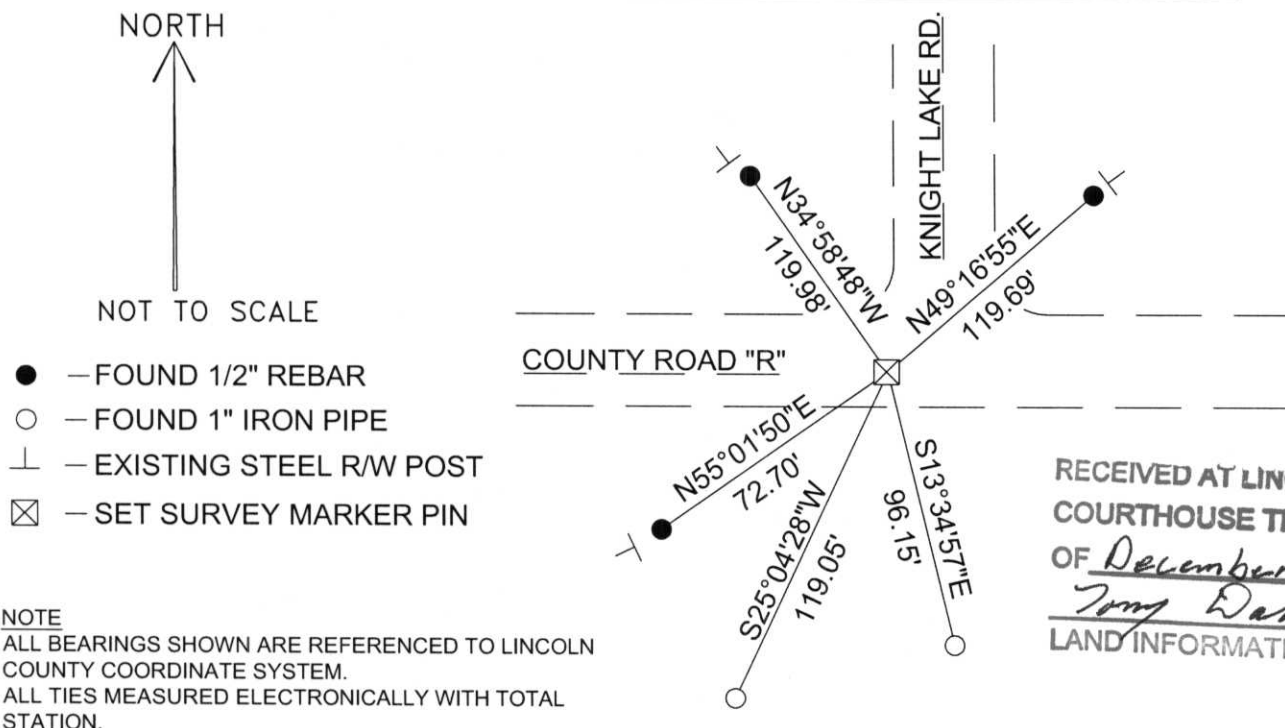
Section 8

(b)(f)(g)(h) Description of monument found at this corner and if it was accepted, state all evidence (material, testimonial, occupational, plats, records, other monuments) used as a basis for accepting. If not accepted or if nothing was found, state evidence used as basis for establishing location. If reestablished through lost corner proportionate methods, indicate all monuments, distances and directions used to establish.

While reestablishing this corner from the existing ties I for discrepancies. I then held the two ties to the South set by Chester Nowaczyk S-1143. I then took new measurements to the ties set by Peter Wolf S-1206 and perpetuated it as shown below.

(c)(d)(e) Plan view of corner with ties to at least 4 witness monuments. If in disagreement with previously established corner, show the distances between the two corners and also indicate the ties to the disputed corner.

NORTH 1/4 CORNER SECTION 8



RECEIVED AT LINCOLN COUNTY
 COURTHOUSE THIS 26th DAY
 OF December 20 03
Tom Dahl
 LAND INFORMATION OFFICE

NOTE
 ALL BEARINGS SHOWN ARE REFERENCED TO LINCOLN
 COUNTY COORDINATE SYSTEM.
 ALL TIES MEASURED ELECTRONICALLY WITH TOTAL
 STATION.

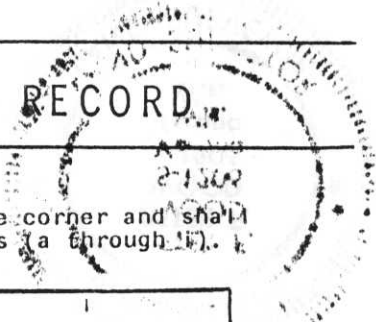
(i) I, Kyle R. Fischer
 (type or print name) certify that the corner location on this record
 was determined by me or under my direction and control and that
 this U.S. Public Land Survey Monument Record is correct and
 complete to the best of my knowledge and belief.

Kyle R. Fischer 12-11-03
 Signature Date



Index No. ... E-7

U. S. PUBLIC LAND SURVEY MONUMENT RECORD

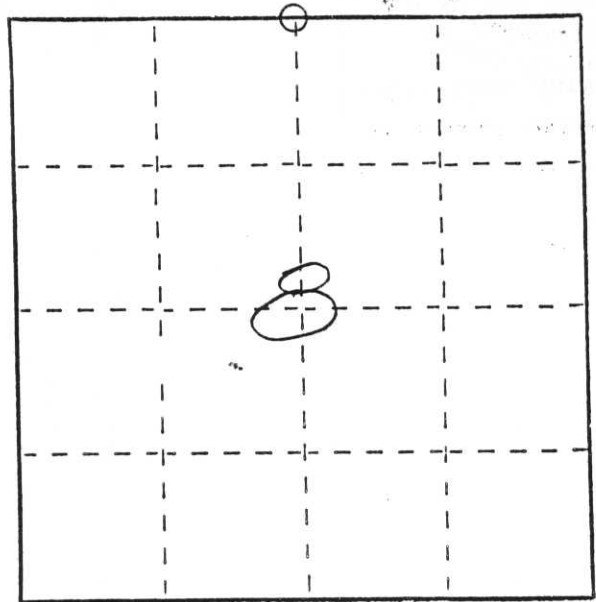


INSTRUCTIONS: This record shall show the location of the corner and shall include all of the following nine elements (a through i).

- (a) Identify the corner by reference to the U.S. public land survey system.

○ = Corner monument restored.

N¹/₄ CORNER SEC. 8-T32N-R7E



- (b) Describe any record evidence, monument evidence, occupational evidence, testimonial evidence or any other material evidence you considered, and whether the monument was found or placed.

*FOUND 2" I.P. AT TIES PER TIE SHEET BY CHESTER NOWALZYK
DATED 3-9-88
TIES SET 6-28-89*

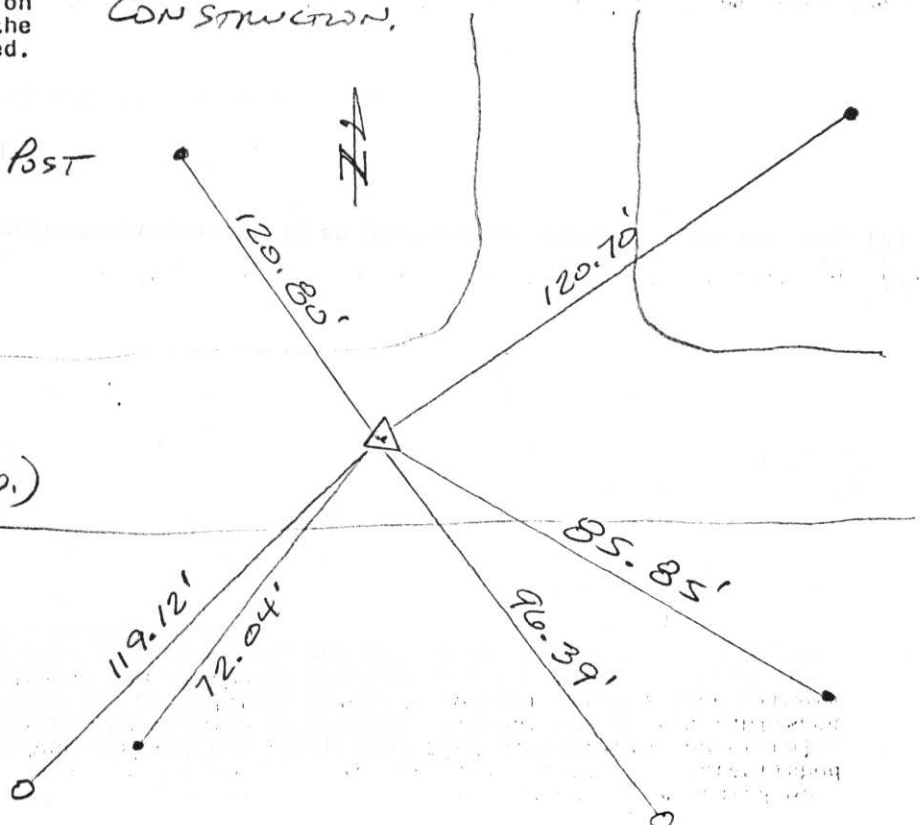
- (c) In the plan view drawing below, provide reference ties to at least 4 witness monuments, or, if the location is within a municipality, to at least 2 witness monuments. (Witness monuments shall be made of concrete, natural stone, iron or other equally durable material.) Describe witness monuments.

- (d) Show a plan view drawing depicting the relevant monuments and reference ties which is sufficient in detail to enable accurate relocation of the corner monument if the corner monument is disturbed. Indicate north.

*TIES SET DURING ROAD CONSTRUCTION
MONUMENT REMOVED DURING
CONSTRUCTION.*

- - 1" I.P.
- - 1/2" REBAR @ RLW POST

*CTH 'R'
(FORMERLY OAK LAKE RD.)*



(e) Describe any material discrepancy between the location of the corner as restored or reestablished and the location of that corner as previously restored or reestablished by distance and direction. Show the discrepancy on the plan view drawing under (d), above. Show the distances between the corner as previously restored or reestablished and (1) the corner as restored or reestablished, and (2) to at least 2 of the witness monuments shown on the drawing in (d), above.

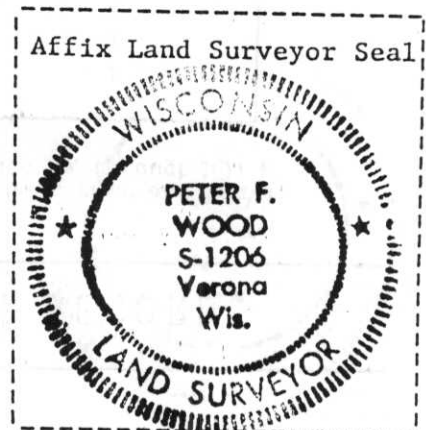
NONE

(f) Was the corner restored through acceptance of (1) an obliterated evidence location, or, (2) a found perpetuated location?

FOUND LOCATION

(g&h) Was the corner reestablished through lost corner proportionate methods? If so, show the method, including the directions and distances to other public land survey corners used as evidence or used for proportioning in determining the corner location?

No



(i) I, Peter F. Wood

(type or print name) certify that the corner location shown on this record was determined by me or under my direction and control and that this U.S. Public Land Survey Monument Record is correct and complete to the best of my knowledge and belief.

[Handwritten Signature]

2/22/95

Date

TO		Lincoln Co. TAX DESCRIPTION OFFICE
		Lincoln County Courthouse
		MERRILL, WI 54452
DATE		3/22/95
JOB NO.		89-473
ATTENTION		
RE.		



910 West Wingra Drive
Madison, Wisconsin 53715
(608) 251-4843
FAX (608) 251-8655

- WE ARE SENDING YOU Attached Under separate cover Copy of letter Change order
 Shop drawings Prints Plans Samples Specifications

COPIES	DATE	NO.	DESCRIPTION
1	3/22/95		TIE STREET NE Corner Sec 8-32-7E
1	3/22/95		TIE STREET N ¹ / ₄ Corner Sec 8-32-7E

THESE ARE TRANSMITTED as checked below:

- For approval Approved as submitted Resubmit _____ copies for approval
 For your use Approved as noted Submit _____ copies for distribution
 As requested Returned for corrections Return _____ corrected prints
 For review and comment _____

REMARKS

THESE TIES WERE SET DURING ROAD CONSTRUCTION OF CTH R IN 1988-1989 WHEN MONUMENTS FORM/SET BY CRESTON NOWACZYK ~~WERE~~ WERE DESTROYED.

COPY TO _____

SIGNED:

Robert F. Wood, R.L.S.

E-7 and E-9

U.S. PUBLIC LAND SURVEY MONUMENT RECORD

Note: This form is intended and designed to fulfill all requirements of Wisconsin Administrative Code, Chapter A-E 5.02, U.S. Public Land Survey Monument Record (3) (a) (b) (c) (d) (e) (f) (g) (h) (i). An additional sheet may be added if necessary to conform with said requirements.

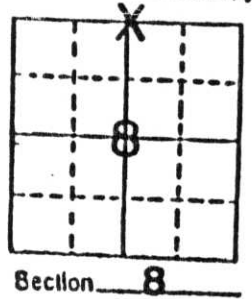
(a) Corner location: Township 32 North

Range 7 East

Town MERRILL

County LINCOLN

N 27,327.229
E 92,346.172



Section 8

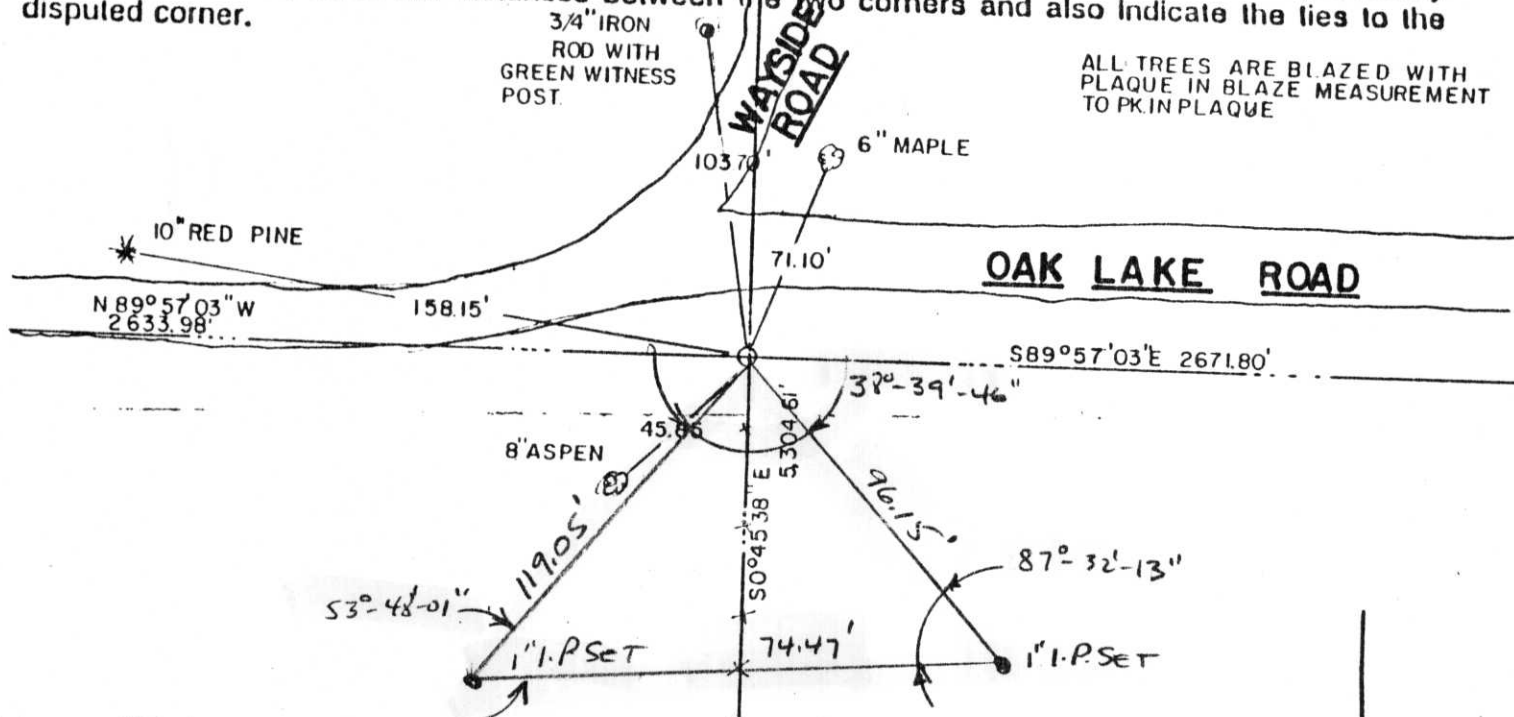
b) (f) (g) (h) Description of monument found at this corner and if it was accepted, state all evidence (material, testimonial, occupational, plats, records, other monuments) used as a basis for accepting. If not accepted or if nothing was found, state evidence used as basis for establishing location. If reestablished through lost corner proportionate methods, indicate all monuments, distances and directions used to establish.

Corner was established from the comparison of Frances Fox notes and a Traverse from the NE corner of Section 8 and the newly established NW corner of Section 8.

NOTE - SET ADDITIONAL TIES WITH ANGLES AND DISTANCES AS SHOWN BELOW TO REFERENCE CORNER AND TIES REMOVED DURING ROAD CONSTRUCTION IN SEPT, 1988.

Peter F. Woods RLS-1206

c) (d) (e) Plan view of corner with ties to at least 4 witness monuments. If in disagreement with previously established corner, show the distances between the two corners and also indicate the ties to the disputed corner.



(i) I, Chester J. Nowaczyk RLS NO. 1143
(type or print name) certify that the corner location on this record was determined by me or under my direction and control and that this U.S. Public Land Survey Monument Record is correct and complete to the best of my knowledge and belief.

Chester J. Nowaczyk 3-9-88
Signature Date



Index No E-7

U.S. PUBLIC LAND SURVEY MONUMENT RECORD

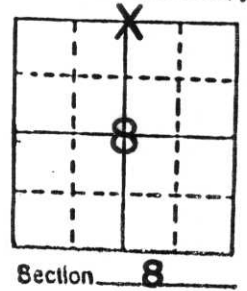
Note: This form is intended and designed to fulfill all requirements of Wisconsin Administrative Code, Chapter A-E 5.02, U.S. Public Land Survey Monument Record (3) (a) (b) (c) (d) (e) (f) (g) (h) (i). An additional sheet may be added if necessary to conform with said requirements.

(a) Corner location: Township 32 North

Range 7 East

Town MERRILL

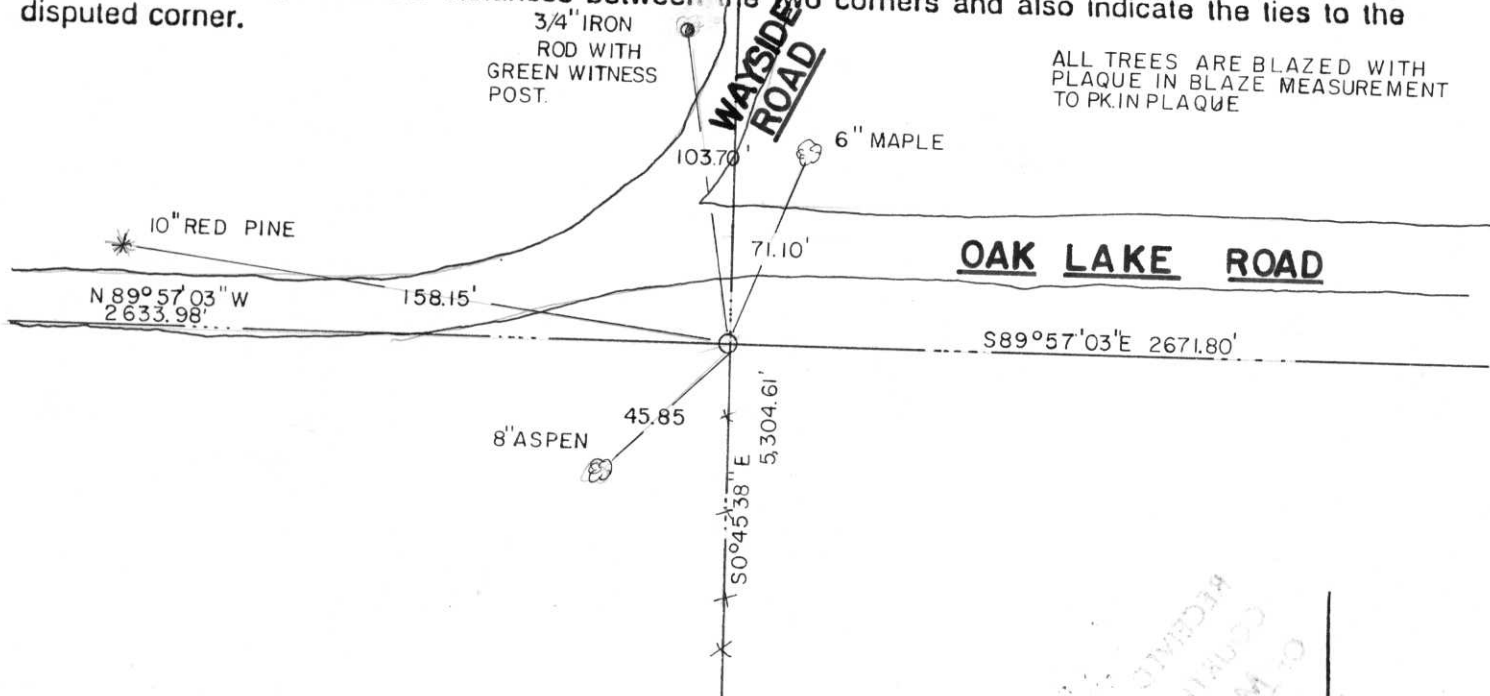
County LINCOLN



b) (f) (g) (h) Description of monument found at this corner and if it was accepted, state all evidence (material, testimonial, occupational, plats, records, other monuments) used as a basis for accepting. If not accepted or if nothing was found, state evidence used as basis for establishing location. If reestablished through lost corner proportionate methods, indicate all monuments, distances and directions used to establish.

Corner was established from the comparison of Frances Fox notes and a Traverse from the NE corner of Section 8 and the newly established NW corner of Section 8.

c) (d) (e) Plan view of corner with ties to at least 4 witness monuments. If in disagreement with previously established corner, show the distances between the two corners and also indicate the ties to the disputed corner.



ALL TREES ARE BLAZED WITH PLAQUE IN BLAZE MEASUREMENT TO PK. IN PLAQUE

(i) I, Chester J. Nowaczyk RLS NO. 1143
 (type or print name) certify that the corner location on this record was determined by me or under my direction and control and that this U.S. Public Land Survey Monument Record is correct and complete to the best of my knowledge and belief.

Chester J. Nowaczyk 3-9-88
 Signature Date

Index No. E-7

WISCONSIN
 CHESTER J. NOWACZYK
 S-1143
 WAUSAU, WIS.
 LAND SURVEYOR