

# Attachment to Tie Sheet W-25, T32N, R6E

I visited corner on 11/08/2012; Book 6, pg. 14. Monument and three tie distances check with tie sheet dated 09/12/1983.

## NOTES

- The South tie is leaning from fallen tree. Distance to top of Iron Pipe as-is: **16.40'**
- The East tree is dead
- North tree is rotted stump with plaque

Anthony R. Dallman 8/04/15

Anthony R. Dallman, PLS-2405

Lincoln County Surveyor



CERTIFIED LAND CORNER RESTORATION

Index No. W-25

State of Wisconsin }  
County of Lincoln } ss.

History of original corner establishment:

Origin of corner unknown but is corner of record of Certified Survey Map recorded in Volume 1, page 107.

I LaVerne H. Mosher, do hereby certify that on the 2nd day of September, 19 83, I found evidence of the East 1/4 corner of Section 36 Township 32, North, Range 6, Fourth, Principal Meridian, as described hereon; and that from this evidence I established a new monument and accessories as described hereon to perpetuate the original location of this corner.

Description of corner evidence found:

Recovered intact a 1 1/2" I.D. iron pipe about 78' East of the centerline of the C.M. St. P. & P. railroad tracks. Area is low and swampy and very few suitable objects are available to tie to. Monument was removed and replaced with standard Berntsen monument pursuant to instructions from Lincoln County Surveyor. A 4' long metal post was positioned East of monument to aid location.

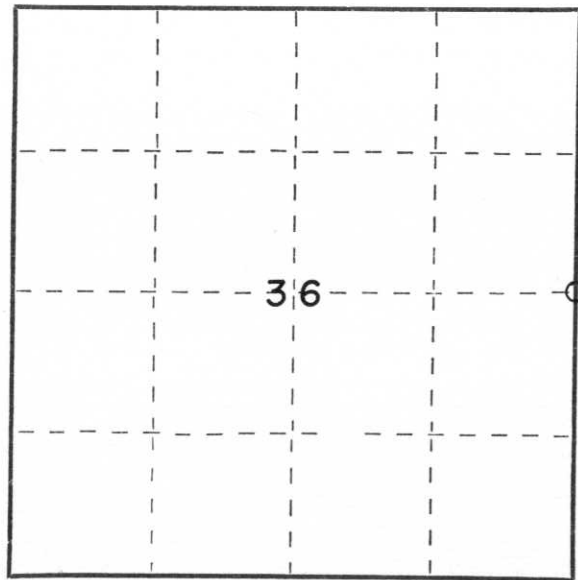
Resident witnesses:

.....  
.....  
.....

Description of monument and accessories I established to perpetuate the original location of this corner.

Standard Berntsen monument

See sketch on reverse.



○ = Corner monument restored.



Dated at Schofield, Wis., this 12th day of September, 19 83.

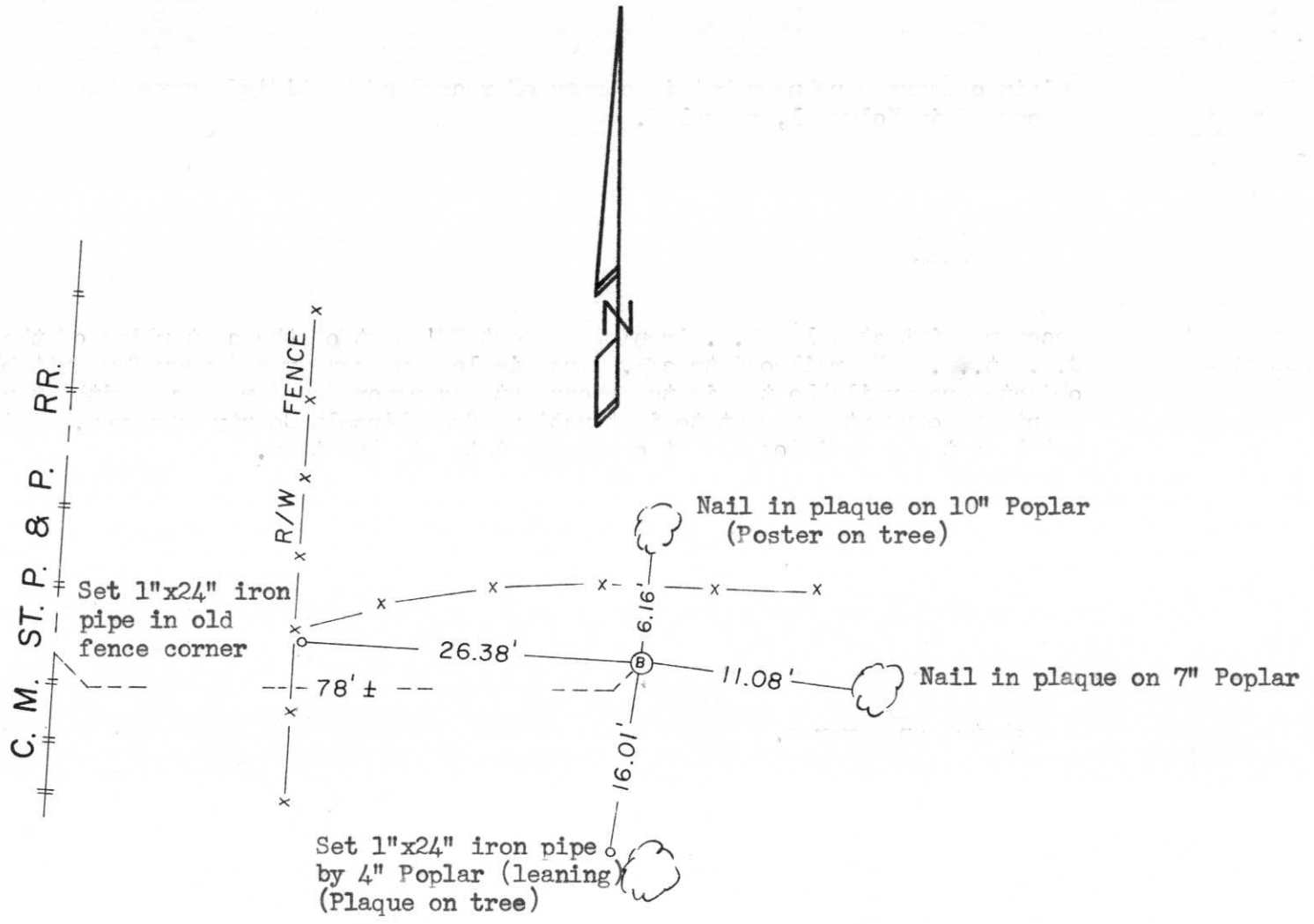
Signature LaVerne H. Mosher Title Reg. Land Surveyor Registration No. S-1188  
(County Surveyor, Registered Land Surveyor, or other duly authorized official)

Office of Register of Deeds, County of \_\_\_\_\_, I hereby certify that the within instrument was filed in this office for record on the \_\_\_\_\_ day of \_\_\_\_\_, 19 \_\_\_\_\_ at \_\_\_\_\_ o'clock \_\_\_\_\_ M.

.....  
(Register of Deeds)

By \_\_\_\_\_ Deputy

RECEIVED AT LINCOLN COUNTY  
 COURTHOUSE THIS 13 DAY  
 OF Sept 1983  
*Bob Pennington*  
 TAX DESCRIPTION OFFICE





2002 8 8



2002 8 8



2002-8-8



2002 8 8



2002 8 8



8 8 2002

