

U.S. PUBLIC LAND SURVEY MONUMENT RECORD

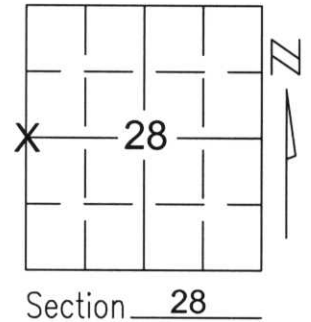
Note: This form is intended and designed to fulfill all requirements of Wisconsin Administrative Code, Chapter A-E 5.02, U.S. Public Land Survey Monument Record (3)(a)(b)(c)(d)(e)(f)(g)(h)(i). An additional sheet may be added if necessary to conform with said requirements.

(a) Corner location: Township 32 North

Range 6 East

Town/City/Village MERRILL

County LINCOLN

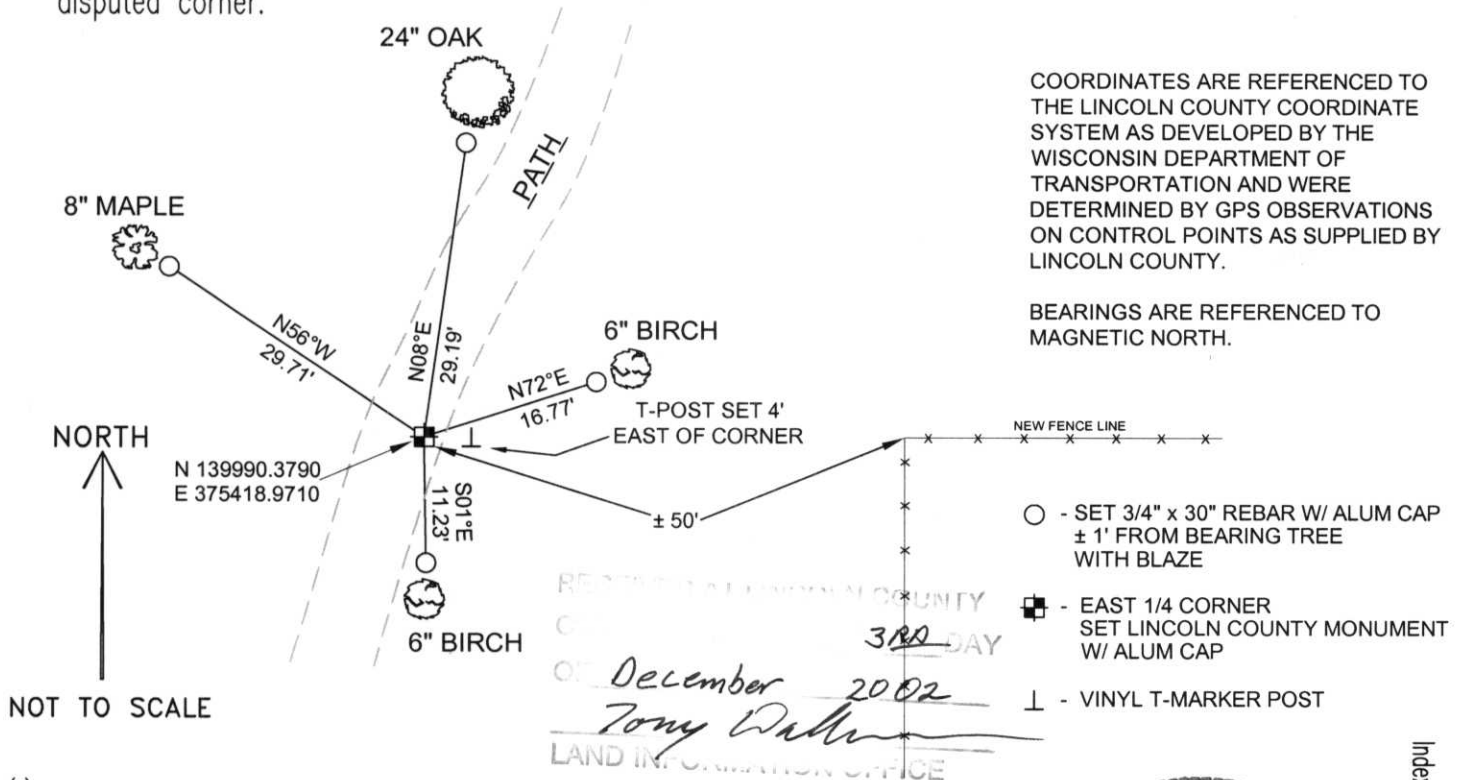


Section 28

(b)(f)(g)(h) Description of monument found at this corner and if it was accepted, state all evidence (material, testimonial, occupational, plats, records, other monuments) used as a basis for accepting. If not accepted or if nothing was found, state evidence used as basis for establishing location. If reestablished through lost corner proportionate methods, indicate all monuments, distances and directions used to establish.

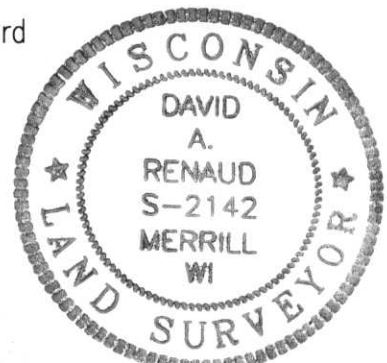
WE SEARCHED THE CORNER LOCATION AND DID NOT FIND ANY ORIGINAL EVIDENCE. WE LOCATED THE WEST 1/4 CORNER OF SECTION 29. A FENCE LINE ON THE EAST-WEST 1/4 LINE OF SECTION 29 AND THE EXISTING FENCE LINE ON THE EAST-WEST 1/4 LINE OF SECTION 28. THESE POSITIONS CREATED A VERY GOOD LINE FOR OUR NORTH-SOUTH POSITION. WE ALSO LOCATED THE FENCE LINE RUNNING ALONG THE NORTH-SOUTH 1/4 LINE. THE INTERSECTION OF THESE FENCE LINES APPEARS TO BE THE BEST EVIDENCE. SET A BERNTSEN MONUMENT AND SET TIES TO PERPETUATE CORNER LOCATION.

(c)(d)(e) Plan view of corner with ties to at least 4 witness monuments. If in disagreement with previously established corner, show the distances between the two corners and also indicate the ties to the disputed corner.



(i) I, David A. Renaud, RLS certify that the corner location on this record was determined by me or under my direction and control and that this U.S. Public Land Survey Monument Record is correct and complete to the best of my knowledge and belief.

David Renaud 11-29-02
 Signature Date



Index No. 283264

5-9



253264